

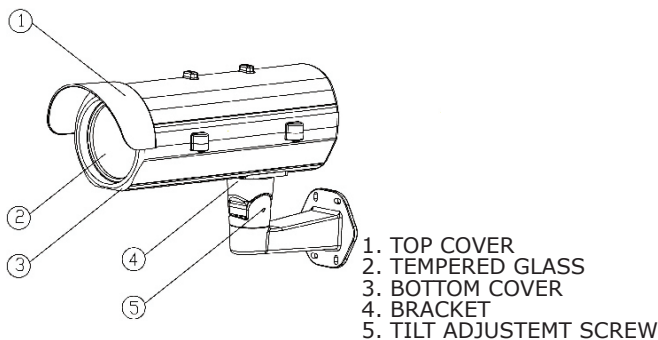
Quick Start Guide

ZEIM-4000193G A.7 725

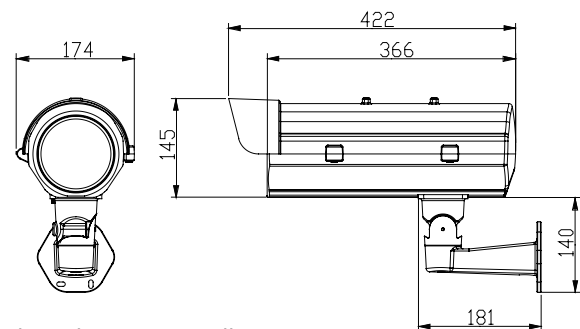
Please read this manual thoroughly before use, and keep it handy for future reference

IP67, Vandal- proof Housing And Bracket

• Overview

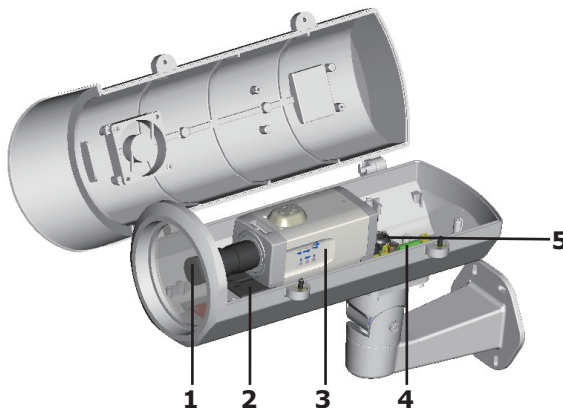


• Dimension



The values are in millimeters.

• Connections and setup

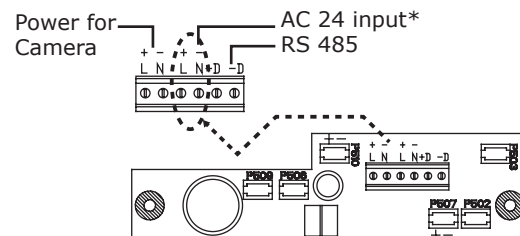


1. Lens(Optional)
2. Stand : Loose side screws of stand, fix tightly the screws for camera on stand, then fix the side screws after camera is set up
3. Camera(Optional): Suitable dimension is less than 210 x 70 x 90 mm
4. Heater board: Designed for AC input and remote control function.
5. Gland: 3 gland and spacer (in the accessory) could be used selectively. Attention, please lock the 3 glands tightly to ensure waterproof.

Note:

1. **Model of AC90-260V** does not contain a blower but **Model of AC24V** does. **Model of AC90-260V** is equipped with a connector board (refer to figure right) instead of heater board connection for **Model of AC24V**
2. For camera of DC12V only, additional adaptor is suggested.

• Heater board Connection



* AC 24V input: automatically power heater and fan.

Heater and fan are enabled by temperature.

• Connector board Connection

(connector board is provided for Hi voltage AC90~260V)

