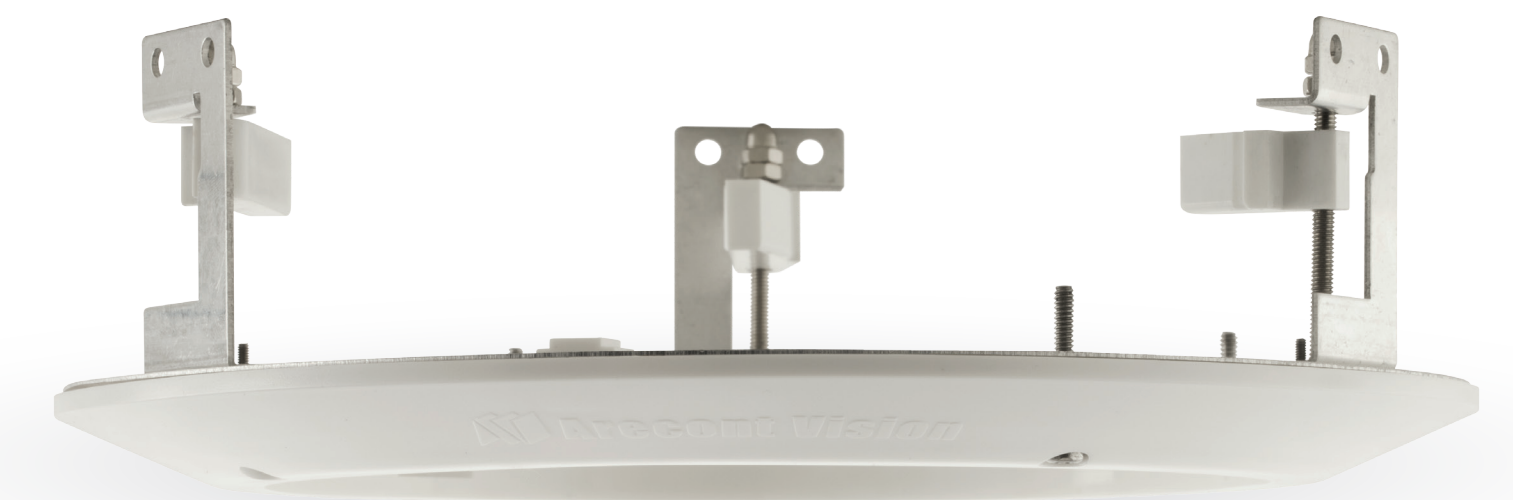


Leading the Way in Megapixel Video™

SO-FMA

In-ceiling SO-FMA Mount Quick Guide

Compatible with SurroundVideo Omni Camera Series



Remove Camera Dome Cover

1 With the supplied L-key, remove the four (4) securing screws on the Surround Video Omni Camera dome cover. Set the bubble and four (4) securing screws aside to re-use with the SO-FMA. The trim ring can be discarded or saved.

Securing Screws*

Camera Dome Cover*

Trim Ring (discard or save)

*Re-use with SO-FMA Trim Ring

Insert Flange Plate Brackets into Ceiling

2 Cut a hole in the ceiling using the template provided. Insert the Flange Plate brackets from the SO-FMA into the ceiling hole and begin to tighten.

SO-FMA In-ceiling Mount

Flange Plate Bracket

NOTE: The lip of the plate should be flush with the ceiling.

Attach Flange Plate and Camera

3 Continue to tighten the screws until the flush mount is snugly installed. The "Support Arm" will ride down the screw to compress the mounting surface.

NOTE: Do not over-torque the lever screws.

Lever Screw

Flange Plate Bracket

SO-FMA In-ceiling Mount

SurroundVideo Omni Camera

Rubber Gasket

Dome Cover

SO-FMA Trim Ring

Securing Screws

Attach Trim Ring

4 Position the bubble under the SO-FMA trim ring and align the hole patterns. Attach the trim ring to the SO-FMA flush mount adapter by rotating counter clockwise. With the supplied L-key, attach the four (4) securing screws.

SO-FMA In-ceiling Mount

Ceiling

SO-FMA Trim Ring

Dome Cover