

# Installation Manual

## Wide Angle Models:

AV1225PMIR-S

AV2225PMIR      AV2225PMIR-S

AV2225PMIR-A      AV2225PMIR-SA

AV2226PMIR      AV2226PMIR-S

AV3225PMIR      AV3225PMIR-S

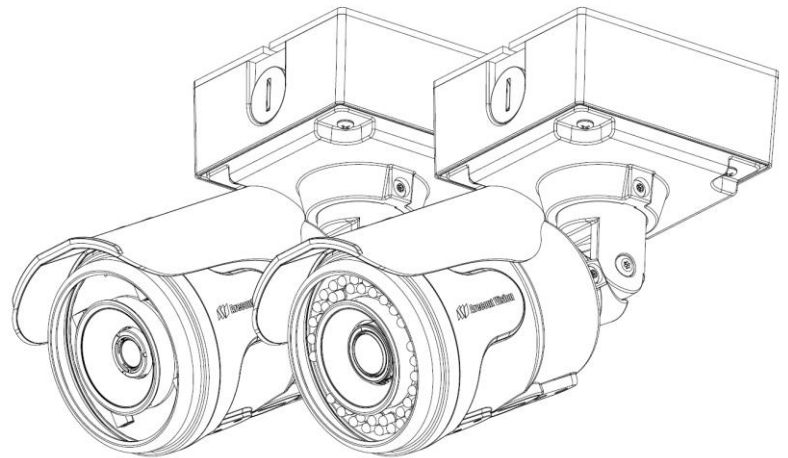
AV3226PMIR      AV3226PMIR-S

AV3226PMIR-A      AV3226PMIR-SA

AV5225PMIR      AV5225PMIR-S

AV5225PMIR-A      AV5225PMIR-SA

AV10225PMIR      AV10225PMIR-S



**Telephoto Model**

**Wide Angle Models**

## Telephoto Models:

AV2225PMTIR      AV2225PMTIR-S

AV2226PMTIR      AV2226PMTIR-S

AV3225PMTIR      AV3225PMTIR-S

AV3226PMTIR      AV3226PMTIR-S

AV5225PMTIR      AV5225PMTIR-S

AV10225PMTIR      AV10225PMTIR-S

MegaView® 2 Installation

Contents

Contents ..... 2

Package Contents ..... 3

Warranty Information ..... 4

Install MegaView® 2 Camera ..... 5

SD Card Installation ..... 8

Replacing the IR LED board: ..... 9

Camera Discovery ..... 10

Web Interface Quick Guide ..... 14

SD Card Functionality ..... 22

Electrical Box Adapter (SV-EBA) Installation Instructions (Sold Separately) ..... 25

Pole Mount Adapter (AV-PMA) Installation Instructions (Sold Separately) ..... 26

Corner Mount Adapter (AV-CRMA) Installation Instructions (Sold Separately) ..... 27

Installation Best Practices ..... 30

LED Indicators (Camera Signal) ..... 31

Support ..... 32

Mounting Template ..... 33

## Package Contents

### MegaView® 2 Camera Package:

- A. Arecont Vision MegaView® 2 Camera
- B. Junction box adapter
- C. Mounting Template for Junction box adapter
- D. Mounting Template for MegaView® 2 Camera
- E. CD with AV100 software and user manuals (license key required for recording)
- F. Security L-key
- G. Pack of four (4) screws and four (4) anchors
- NOTE: Anchors and screws are good to be used for concrete, wall block and red bricks.*  
*NOTE: Screws by themselves can be used in wood.*
- H. Rubber plug
- I. Pack of four (4) machine screws, #8-32, ½" Phillips Pan Head



Image 1

## Warranty Information

### 3 Year Limited Warranty

ARECONT VISION warrants to Purchaser (and only Purchaser) (the “Limited Warranty”), that: (a) each Product shall be free from material defects in material and workmanship for a period of **thirty-six (36) months** from the date of shipment (the “Warranty Period”); (b) during the Warranty Period, the Products will materially conform with the specification in the applicable documentation; (c) all licensed programs accompanying the Product (the “Licensed Programs”) will materially conform with applicable specifications. Notwithstanding the preceding provisions, ARECONT VISION shall have no obligation or responsibility with respect to any Product that (i) has been modified or altered without ARECONT VISION’s written authorization; (ii) has not been used in accordance with applicable documentation; (iii) has been subjected to unusual stress, neglect, misuse, abuse, improper storage, testing or connection; or unauthorized repair; or (iv) is no longer covered under the Warranty Period. ARECONT VISION MAKE NO WARRANTIES OR CONDITIONS, EXPRESS, IMPLIED, STATUTORY OR OTHERWISE, OTHER THAN THE EXPRESS LIMITED WARRANTIES MADE BY ARECONT VISION ABOVE, AND ARECONT VISION HEREBY SPECIFICALLY DISCLAIMS ALL OTHER EXPRESS, STATUTORY AND IMPLIED WARRANTIES AND CONDITIONS, INCLUDING THE IMPLIED WARRANTIES OF MERCHANTABILITY, FITNESS FOR A PARTICULAR PURPOSE, NON-INFRINGEMENT AND THE IMPLIED CONDITION OF SATISFACTORY QUALITY. ALL LICENSED PROGRAMS ARE LICENSED ON AN “AS IS” BASIS WITHOUT WARRANTY. ARECONT VISION DOES NOT WARRANT THAT (I) THE OPERATION OF THE PRODUCTS OR PARTS WILL BE UNINTERRUPTED OR ERROR FREE; (II) THE PRODUCTS OR PARTS AND DOCUMENTATION WILL MEET THE END USERS’ REQUIREMENTS; (III) THE PRODUCTS OR PARTS WILL OPERATE IN COMBINATIONS AND CONFIGURATIONS SELECTED BY THE END USER; OTHER THAN COMBINATIONS AND CONFIGURATIONS WITH PARTS OR OTHER PRODUCTS AUTHORIZED BY ARECONT VISION OR (IV) THAT ALL LICENSED PROGRAM ERRORS WILL BE CORRECTED.

For RMA and Advance Replacement information visit [ArecontVision.com](http://ArecontVision.com)

## Install MegaView® 2 Camera

### Mounting the Camera:

1. Remove camera and hardware from the box.
2. Use the mounting template (**Image 1-C**), to prepare the mounting provisions for junction box adapter installation.

3. Attach provided Junction Box Adapter (**Image 1-B**) to the wall using appropriate hardware.

*NOTE: Hardware, provided with the unit, is only suitable for surfaces listed on page 3.*

4. Remove the conduit plug on Junction box adapter and connect  $\frac{3}{4}$ " NPT conduit pipe to Junction Box Adapter shown in **Image 2**.

*NOTE: Use silicon or water pipe seal tape to make sure no water leakage between conduit pipe and junction box adapter.*

5. Run Ethernet cable and other cables (if necessary) through the Junction Box Adapter and connect to Megaview® 2 pigtail cable as shown in **Image 8**.

6. Add provided rubber plug (**Image 1-H**) on the bracket to ensure a water tight installation for outdoor applications as shown in **Image 3**.

7. Organize pigtail cable and attach MegaView® 2 camera to Junction Box Adapter using provided screws (**Image 1-I**) as shown in **Image 3-1** and **Image 4**.

*NOTE 1: Water damage from improper installation is not covered by the warranty!*

*NOTE 2: Use of silicon on the RJ45 connector without junction box adapter does not guarantee a water resistant install.*

**$\frac{3}{4}$ " NPT Pipe**

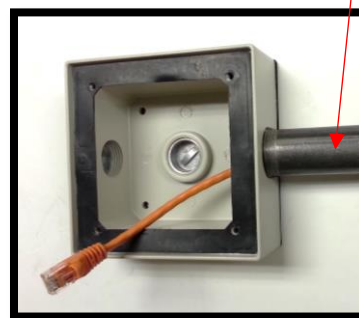


Image 2



Image 3



Image 3-1





Image 4

8. Use the security L-key to adjust MegaView® 2 bracket to appropriate position. ( Image 5)



Image 5

**CAUTION:** Only adjust the screws with an arrow pointing to them on the bracket base and camera body (Image 6)

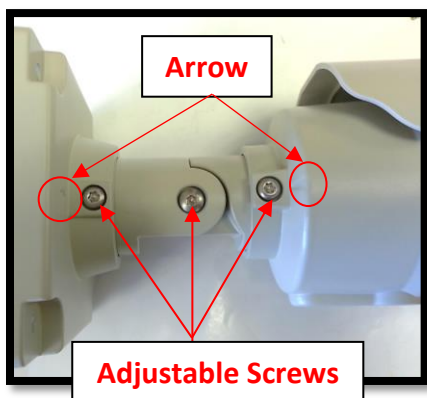


Image 6

**NOTE 1:** Bracket screws are all security screws that are tamper-resistant.

**NOTE 2:** Bracket with 3 axes enables easy installation in any location, including 360° camera body rotation, 90° tilt, 360° bracket rotation. (Image 7)

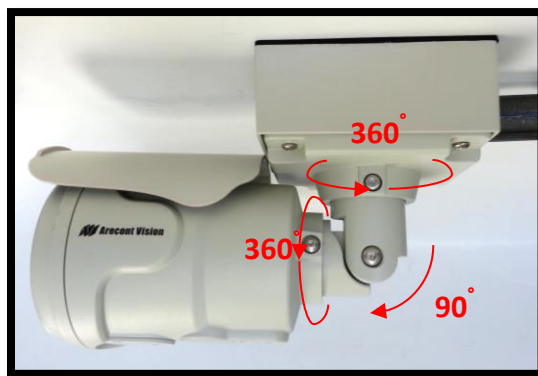


Image 7

**NOTE 3:** MegaView® 2 is a total PoE class 0 solution to power the camera, IR illuminator and fan. Fan is always on.

**NOTE 4:** To use the external power, 12-48VDC or 24VAC, power on camera, connect external power with pigtail cable connector (Image 8)

**NOTE 5:** Only MegaView® 2 –A audio models have female 3.5mm audio in / out jack.

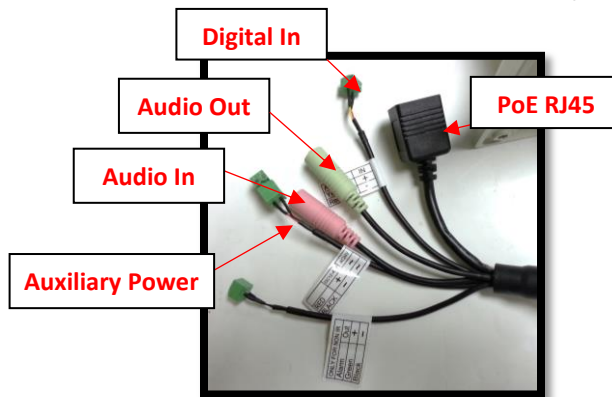


Image 8

## **Optional: Connecting Digital I/O:**

9. To use digital I/O, connect digital I/O with pigtail cable connector as shown in **Image 8**.

*NOTE 1: MegaView® 2 only supports digital input but no digital output.*

*NOTE 2: Table 1 shows electrical characteristics*

Electrical Characteristics:		Min	Max
Input voltage (V) (measured between + and – terminals)	ON	2.9	6.3
	OFF	0	1.3
	OFF	-	0.1

**Table 1**

*NOTE 3: The digital input is electrically isolated from the rest of the camera's electrical circuitry via general-purpose photo couplers. The input is additionally protected with a serial 250 Ohm resistor, and a debouncing circuit. Duration of any input signal should be at least 5 ms to comply with the requirements of the debouncing circuit.*

*NOTE 4: Table 2 shows cable color for digital input*

Green	Digital IN +
Black	Digital IN -

**Table 2**

## SD Card Installation

1. Use Phillips screwdriver to remove sun shield cover as shown in **Image 9**
2. Use Phillips screwdriver to unscrew four screws on the lid, and take off the lid as shown in **Image 10**
3. Push SD card into SD card slot, or take SD card out from SD card slot as shown in **Image 11**

*Note: For more SD card information, please refer to “SD Card Functionality”*



Image 9

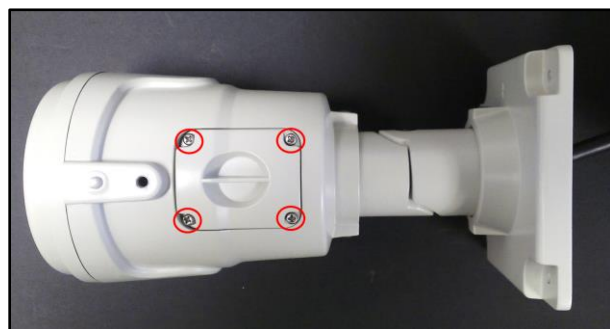


Image 10

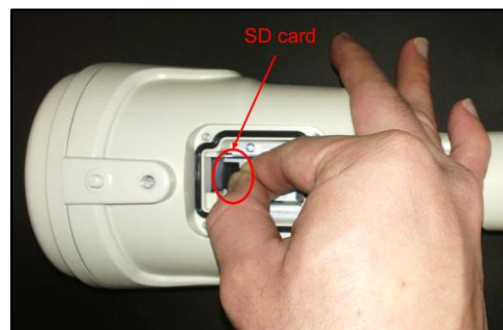


Image 11

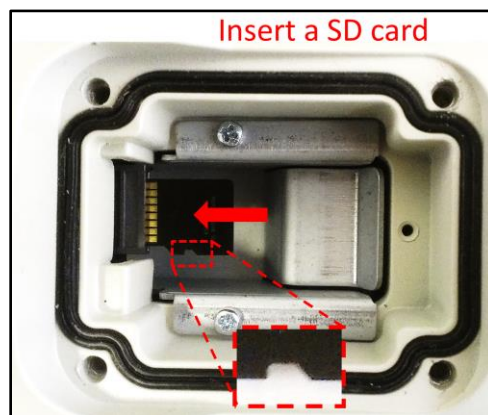


Image 12

*NOTE: Please Insert SD card in the correct orientation as shown on **Image 12***



### Replacing the IR LED board:

1. Unscrew glass ring (**Image 13**)
2. Use Phillips screwdriver to remove IR LED board (**Image 14**)
3. To replace IR LED board, unplug cable and replace new IR LED board (**Image 14-1**)

#### NOTE :

*48pcs IR LED board for wide angle MV2: part number: M000094-34*

*4pcs IR LED board for tele photo part number: M000094-38*



Image 14



Image 13

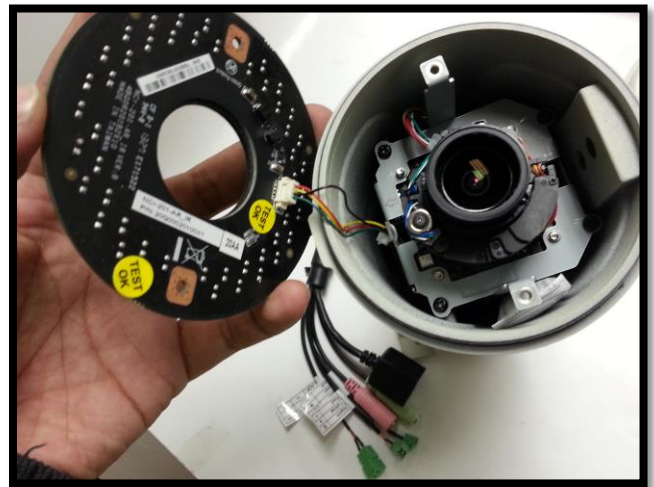


Image 14-1

## Camera Discovery

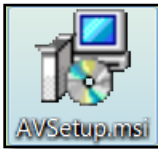
1. Install the AV200 application manager Software found on the CD.

*NOTE: you can download latest version AV200 and installation manual on website*

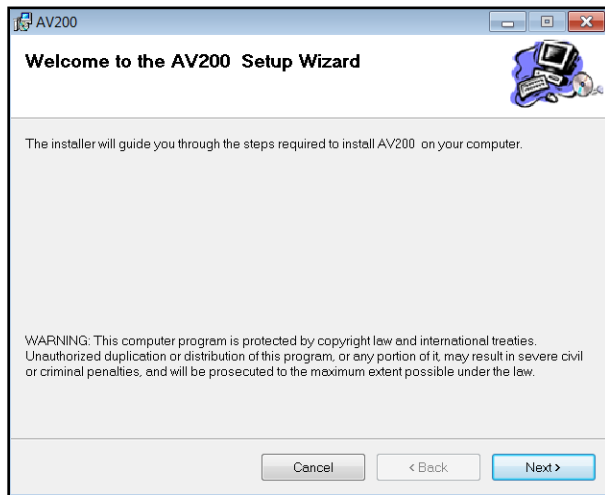
<http://www.arecontvision.com/software.php>

2. Running the Program Installer

To begin the installation of the AV200 software, launch the AVSysSetup.msi installer (double-click or right click and chose Open).



This will start the installation and is followed by the installation welcome screen.



Click next and follow the AV200 Setup Wizard to install the AV200.

3. Adding Cameras with System Setup Wizard

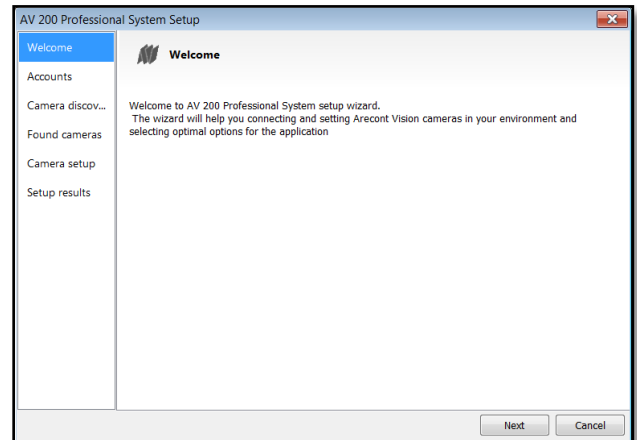
After the AV200 is installed, the first time it is launched the System Setup Wizard will be started.

Anytime you wish to re run the setup wizard in the future you can access it from your desktop by clicking on the icon called

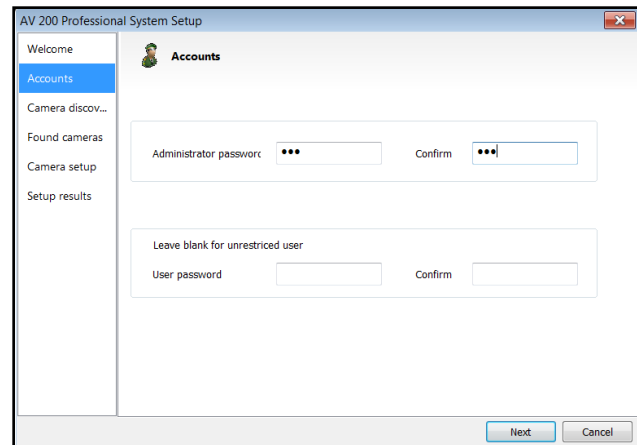


“AVSysSetup”.

The first screen the wizard displays is the welcome screen.



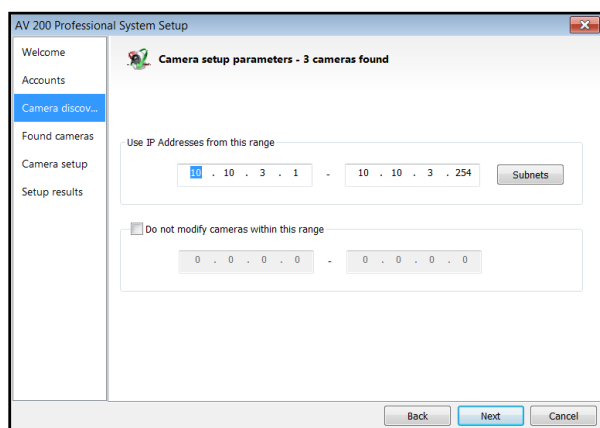
Click next to continue. Following the welcome screen, the Accounts screen will ask to set up Administrator and User passwords.



An Administrator password must be set and confirmed. The wizard will not allow a blank password for Administrator and setup cannot proceed without setting one.

User password can be left blank, allowing standard users to launch the application without a password. Click Next to continue.

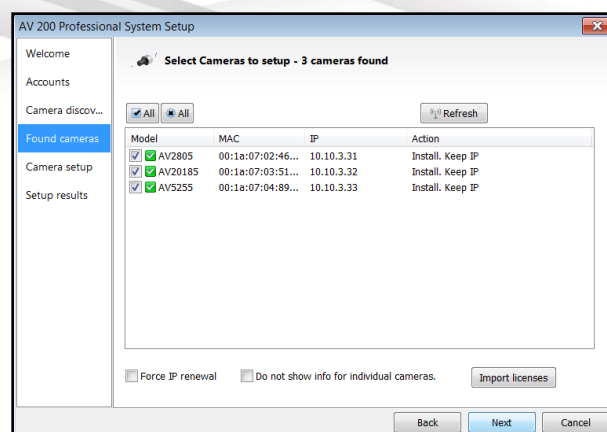
The next screen in the wizard is the camera discovery page.



A range of IP addresses can be defined to apply to the cameras. If unchanged, the default address range will be defined by the IP address currently assigned to the computer. The second IP range means cameras within this range will be not selected by default. No changes will be made to any cameras not selected (see next wizard page).

Click Next to continue.

The following screen will display a list of cameras discovered on the network.

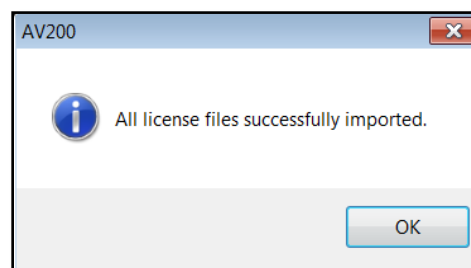


The Refresh button provides an option to make sure all cameras are found or to rediscover cameras that were connected after wizard started.

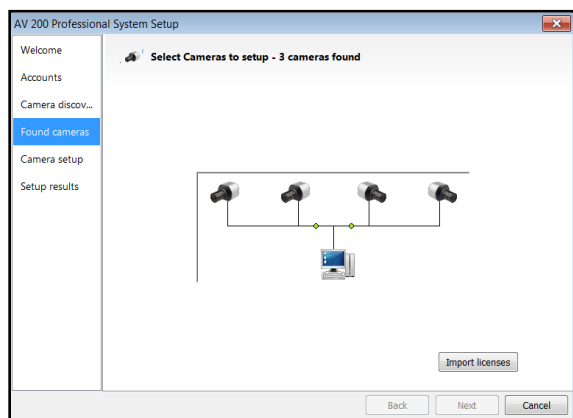
If Refresh is selected, the wizard will display the discovery screen while it searches for cameras on the network.

If you have recording licenses click the button called "Import licenses" to browse to the folder on your computer the license files are located. As example if you had licenses for cameras previously in AV100 software they will usually be found in the "C:\Program Files\Arecont Vision\Video Surveillance\license" directory.

After the license files are successfully imported you will see the following pop up display.

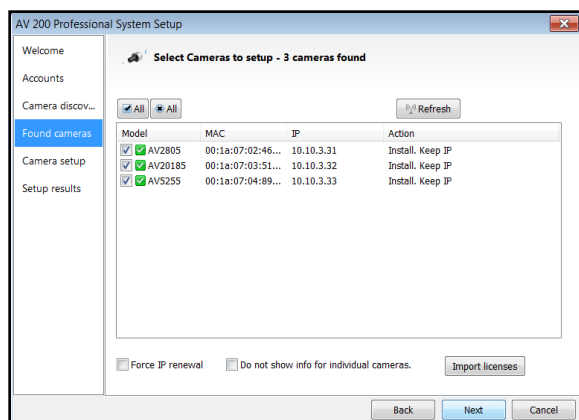


Click “OK” and then next to proceed to discovery.



When the discovery process ends, a list of cameras found on the network will be displayed.

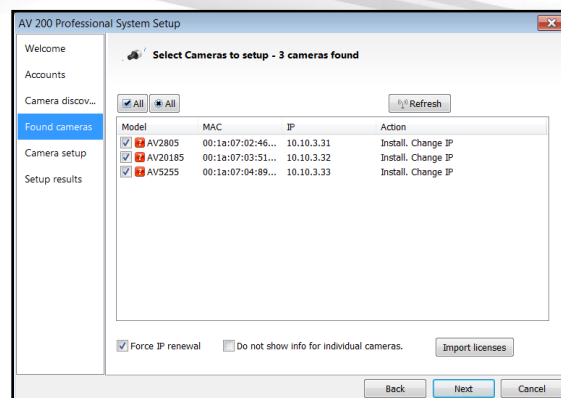
The camera model, MAC address, current IP address and status of the camera will be displayed in the list.



If the current IP address assigned to the camera is incompatible with the subnet the computer running AV200 is assigned to; a warning icon will be displayed next to the camera title and the Action message will display signifying the camera as inaccessible.

No camera IP addresses are changed at this stage. To apply an IP change to all

selected cameras check the radio button labeled Force IP renewal.

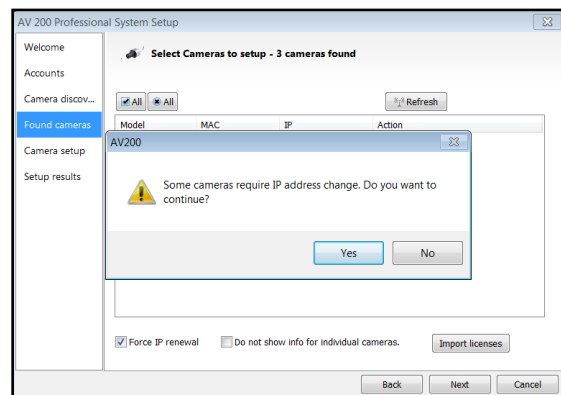


If changes are made to the address, the screen will be followed by an individual confirmation of the IP address change and the title of each camera found on the network.

Individual confirmation screens for each camera can be skipped, but the software will change the IP addresses of each camera found without confirmation.

To change all the addresses and skip to the end of the set up process, check the radio button called do not show info for individual cameras.

Click next and receive a pop-up confirmation window warning that camera IP addresses will be changed.

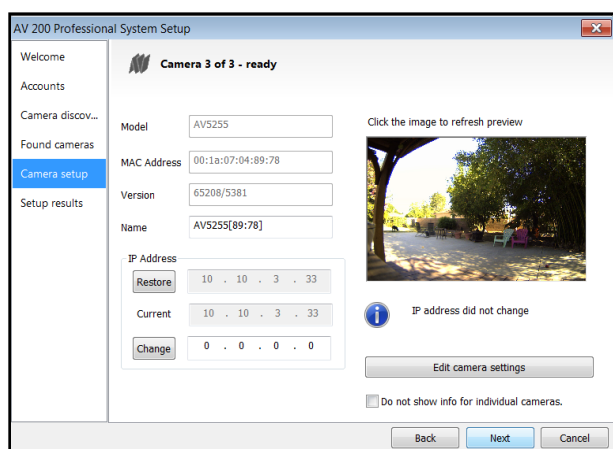


Click yes to continue.

If the option for Do not show info for individual cameras is selected, the wizard will jump to the summary screen.

If Do not show info for individual cameras is not selected, the next series of screens will display a screen for each camera discovered.

The Model, MAC address, Firmware/ Hardware version, and a preview image from the camera will be displayed. There is an option to change the camera Name or configure a custom IP address different than the one currently assigned.



There is also an option to choose to restore the camera to its previous IP address.

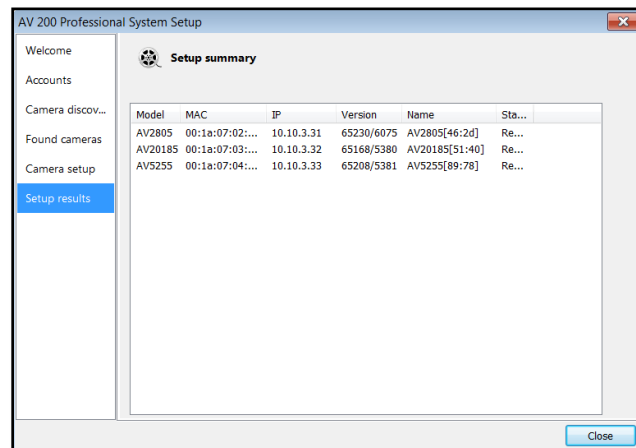
To skip any remaining individual camera information pages, check the radio button for “do not show info for individual cameras”.

Select Next to continue.

Following the camera discovery process a summary of all cameras set up in the system will be displayed.

Check the cameras listed on this screen to confirm that all cameras connected to the network have been discovered and successfully installed.

If necessary, click Back to re-run the discovery process or click next to proceed to the final setup screen.



The final screen indicates that the system setup is complete.

Click “Close” to complete the wizard and exit the software.

4. To launch the AV200 application click on the desktop icon called “AV200”



*NOTE: For more detail instructions, you can refer to the latest version AV200 installation manual*



## Web Interface Quick Guide

The web interface page is accessed by typing in any web browser:

[http://ip\\_address](http://ip_address) or [http://ip\\_address/index.html](http://ip_address/index.html)

*NOTE: For supporting H.264 streaming on webpage, the recommended browsers are Internet Explorer and Firefox*

*NOTE: For more details, you can refer to the latest version AV Camera Web Page and Access Protocols manual*

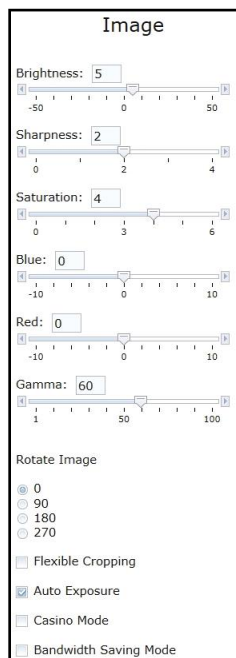
<http://www.arecontvision.com/software.php>

### 1. Menu Navigation



Clicking on any button will cause the menu displayed on the left side of the page to jump to the settings section for the selected function.

### 2. Image Menu



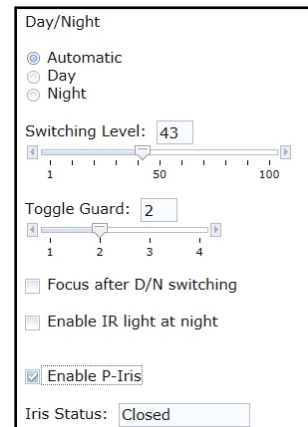
Brightness controls the overall brightness of the camera image and works in conjunction with the exposure controls to maintain the image brightness

Sharpness controls sharpness and edge definition of the image. Setting this to higher levels may make overall image to appear a bit softer while causing lines and edges in the image to look smoother

Saturation controls the color saturation of the image

Rotate Image allows image to be digitally rotated 0°, 90°, 180°, or 270°

Bandwidth Saving Mode optimizes all camera settings to provide the best quality at lowest bitrate possible



Day/Night settings control operation of this functionality in Day/ Night model cameras

- Automatic is default setting enabling the camera to automatically change from color (Day) to black and white (Night) modes as illumination levels drop off
- Day this mode will manually place the camera in color mode
- Night this mode will manually place the camera in black and white mode

Switching Level this slider bar and numeric field control the switching point when the camera switches from “Day” (color) into “Night” (black & white) mode. Higher values cause the camera to stay in “Day” mode at lower illumination levels, lower values will cause the camera to switch to “Night” mode in higher illumination

Toggle Guard this slider bar and numeric field control the level of brightness required to switch from “Night” (black & white) into “Day” (color) mode. Higher values will cause the camera to stay in “Night” (black & white) mode longer than lower values as illumination levels rise. Toggle Guard should be adjusted to prevent the mode from toggling between “Night” and “Day” modes in areas where transitional lighting exists in the scene

Enable P-Iris this button enables the P-Iris control function on the camera

*Note: If “Enable P-Iris” is unchecked, the iris will be fully open to the maximum. It may result in less sharpness and artificial color under strong light condition as the image shown below.*



Binning

☐ Binning in day mode
 ☐ Binning in night mode

Downscaling

☐ Enable Scaling
 ☐ View Scaled Video

Scaling Size: VGA 640x480 ▼

Binning control operation of the “binning” function when using a 3, 5, or 10mp camera model

- Binning in day mode will place the camera in binning mode when the camera is in “Day” mode
- Binning in night mode will place the camera in binning mode when the camera is in “Night” mode

Downscaling user can downscale their desired image resolution

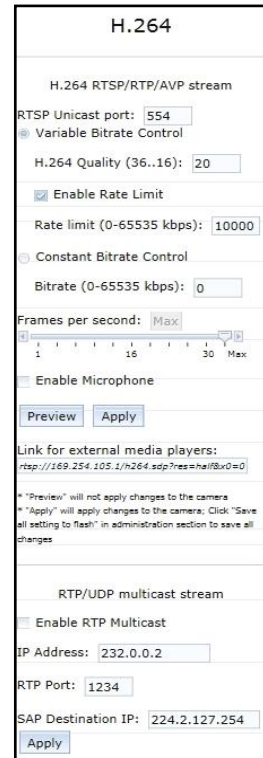
Scaling Size sets down-scaling image size

720p	1280x720
XVGA	1024x768
DVGA(16:9)	1136x640
DVGA(3:2)	960x640
SVGA	800x600
D1(PAL)	720x576
4CIF(PAL)	704x576
D1(NTSC)	720x480
4CIF(NTSC)	704x480
VGA	640x480
2CIF(PAL)	704x288
HVGA(4:3)	480x360
2CIF(NTSC)	704x240
HVGA(8:3)	640x240
HVGA(3:2)	480x320
HVGA(16:9)	480x272
CIF(PAL)	352x288
CIF(NTSC)	352x240
QVGA(SIF)	320x240
QCIF(PAL)	176x144
QCIF(NTSC)	176x120
SQCIF	128x96

3. Video Menu


Show Video type these radio buttons control selection of display mode

- iv. Disable Video when selected this button the live video won't show on the screen
- v. MJPEG over HTTP this is the default browser display option. No plug in is required as most browsers can decode MJPEG images
- vi. H.264 over RTP/UDP will display video using H.264. If viewing this way for the first time you will see the following prompt to download the necessary browser plug –in allowing display of video in the browser using this compression

4. H.264 Menu


RTSP Unicast port this numeric field allows configuration of the application port for RTSP Unicast video streams. Default is 554 valid values that can be set are 1 – 65535

Variable Bitrate Control when this radio button is selected the camera will maintain the bit rate based on the Quality setting and rate limit configured. There may be variation in the bit rate output from the camera with additional image compression increase being applied if the bit rate exceeds the user defined limit

- i. H.264 Quality this numeric field allows configuration of the default image compression (also called Quantization parameter) setting for H.264 video streaming from the camera. Higher levels reduce the

compression and result in higher quality images with trade off for larger file sizes. Lower levels increase image compression reducing file sizes with the trade off for lower quality image detail. Valid numeric values that can be entered here are 16 to 36. The configured value will be constant default unless rate limit or constant bit rate control are selected

- ii. Enable Rate Limit this radio button enables operation of the bit rate limit feature for H.264
- iii. Rate limit this numeric field allows setting the maximum bit rate limit for Variable bit rate control. Valid values that can be entered are 0 to 65535 kbps. When active the bit rate will vary depending on camera resolution, illumination, and scene content until it exceeds the configured limit. When this limit is exceeded image compression will be increased in attempt to keep the bit rate within the configured limit

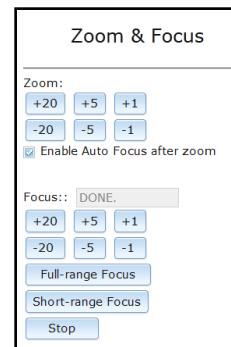
Constant Bitrate Control when active this radio button enables the constant bit rate control feature. Unlike variable bit rate control option constant bit rate control will set a hard limit for the bit rate. Image compression will be set to whatever value achieves the configured bit rate. This method of bit rate control can achieve a more consistent overall bit rate. Image quality will be dependent on camera resolution, illumination, and scene content based on the constant control limit configured

- i. Bitrate this numeric field allows setting the bit rate value for constant

bit rate control. Valid values that can be entered are 0 to 65535 kbps

Frames per second this slider bar control allows setting a frame rate output limit for the H.264 video stream. Default value is “Max” minimum fps is 1. Reducing the frame rate output is another way to control the bandwidth used for the H.264 video streaming from the camera trade off is the obvious reduction of frame rate output at the camera

## 5. Focus Menu



### Adjusting the Remote Focus and Remote Zoom

- i. To manually adjust zoom, click the “+20”, “+5”, “+1”, “-20”, “-5”, “-1” buttons to zoom in and out, adjusting the field of view

**NOTE 1:** “+20” zooms in 20x further than “+1”

**NOTE 2:** If the “Enable Auto Focus after zoom” option is checked, the focus will automatically be adjusted when zoom is changed.

- ii. Set up a focus area (if necessary) by drawing a rectangle with the mouse (by left-clicking and dragging the mouse to a desired zoom size)



- iii. To automatically adjust focus, choose “Full-range Focusing” or “Short-range Focusing” depending on the image clarity
- iv. If the image is completely out of focus, choose “Full-range Focus” to scan the full focus range and find the best focus position.
- v. If the image is slightly out of focus, choose “Short-range Focus” to fine tune and quickly get a precise focus position to save time.
- vi. To manually focus, click the “+20”, “+5”, “+1”, “-20”, “-5”, “-1” buttons to fine tune the focus.

## 6. Network Menu

IP Address the camera IP address can be manually configured in this field

Subnet Mask the sub net of the local network can be manually configured in this field

Default Gateway the gateway IP address for the local network can be manually configured in this field

DHCP/ Fixed Selection these radio buttons allow configuring the camera as either Fixed IP (manually configured), or DHCP (auto addressed from local DHCP server) when selected

Miscellaneous settings allow assignment of a camera name in the Camera Name field, and creating an alternate HTTP access port in the Second HTTP port field

## 7. Motion Detection Menu

Enable radio button enables the motion detection feature when selected. When this button is selected no additional changes can be made to the other settings in this menu

Extended radio button enables the “extended” motion detection from default 64 to 1024 detection zones for enhanced detection sensitivity



Zone Size determines the size of the detection zone grid displayed when motion detection feature is enabled

*Note: if the zone size is set too small for image sensor pixel resolution the motion detection grid can be made smaller than the actual image size. Areas not covered by the grid will not be monitored for motion*

Detail determines the size of each zone displayed by the motion detection grid contains sub zones the number of which is determined by the zone size setting up to 32x32 (pixels). This setting configures the sensitivity of the motion detection to the size of objects in the image moving through the zone. Higher values will trigger motion only for larger objects moving through the zone, lower values will cause detection of smaller objects in the zone (increasing sensitivity to smaller size objects moving through the image)

Level threshold determines the sensitivity to brightness changes between dark and light objects within each grid zone. As example "Detail" will set the size of the object being detected within the zone, "level" sets the duration that movement must be maintained to trigger motion detection. Lower settings can increase false motion alarms caused by image noise, higher settings will require more movement to trigger a motion event

Motion Sensitivity, % determines the sensitivity to sudden overall brightness changes in the image. This setting can be useful to prevent false motion alarms due to sudden exposure changes such as car head lights from triggering motion detection. Larger values will disregard larger changes affecting the entire image, smaller values

will make motion detection more sensitive to large changes in the image.

*Note: the motion mask setting under the Video menus requires Enable to be selected as on before areas can be masked to prevent motion detection in selected zones*

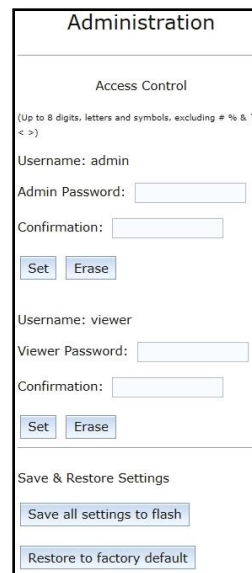
### 8. Privacy Mask Menu



Enable Privacy Mask this radio button when selected will enable any privacy masks that have been configured by the Privacy Mask function in the Video menu.

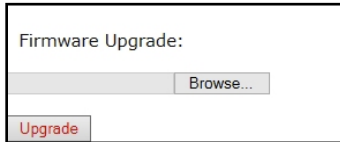
*Note: masked areas of an image are transmitted with the mask in place, it is part of the video and cannot be turned off or removed from video that is being viewed or recorded after transmission*

### 9. Administration Menu



Save all settings to flash will save the current camera configuration as setting default

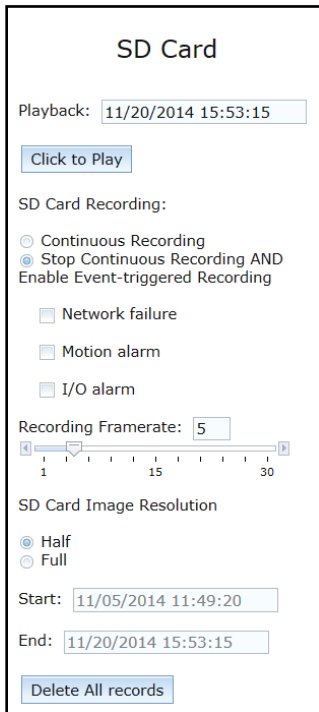
Restore to factory default will restore all settings to factory default (except the camera IP address)



Firmware upgrade allows selection and application of a firmware file to be applied to the camera

### 10. SD Menu

\*See section below **SD Card Functionality** for detailed instructions on this feature



Playback SDcard video allows the user to choose the specific time of video to playback

### SD Card Recording

- Continuous Recording allows the user enable continuously recording
- Stop Continuous Recording AND Enable Event-triggered Recording allows the user to enable events recording when network failure, motion alarm or I/O alarm triggered

*NOTE: if the continuous recording is disabled and no of event recording is enabled, the SD card will not initiate recording.*

Start/End shows the time frame of the video being recorded.

### 11. About Menu



This menu displays important information about the camera model being viewed

## Optional: Enable Audio:

1. Connect a mono analog microphone to Microphone In and connect an active speaker with a built-in amplifier via the in-line jack as shown in **Image 8**, if needed.
2. Choose “H.264 over RTP/UDP” as shown on **Image 15-1** and check “Enable Microphone” then click “Preview” and “Apply” buttons as shown on **Image 15-2**.  
*NOTE: Audio only works in H.264 RTP/UDP streaming*

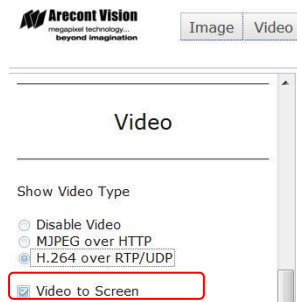


Image 15-1

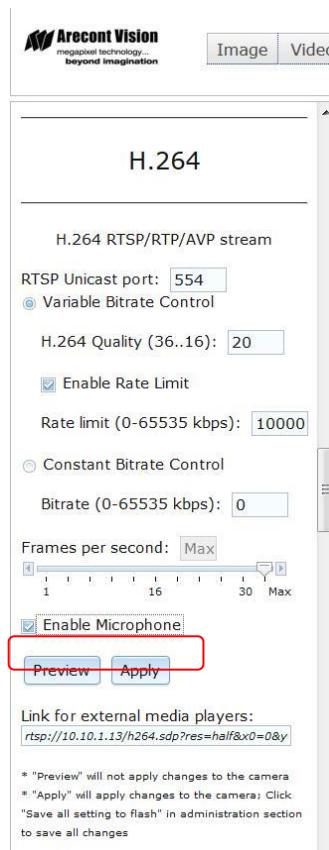


Image 15-2

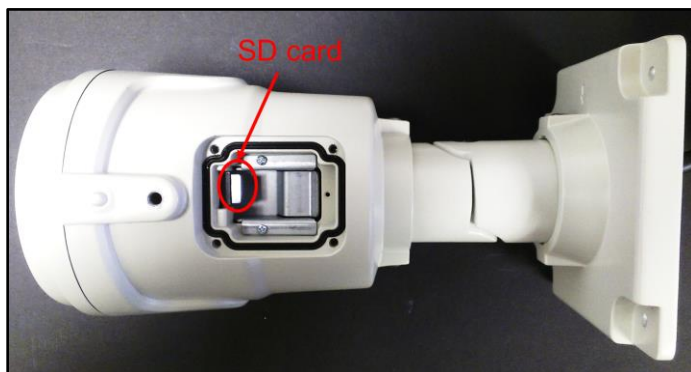
## SD Card Functionality

### Important notes about this feature:



1. The camera will support class 10 microSD or microSDHC cards up to 32GB. Not all SD cards are the same. Arecont Vision highly recommends using **SanDisk Extreme Micro SD cards** (or an equivalent substitute) as these cards have been fully tested without issue. The SanDisk Extreme line is better suited for demanding applications like constant recording. Typical lower grade SD cards are meant for multimedia applications and will, at times, have questionable quality and reliability.
2. Recording to the SD card is FIFO (first in first out). The oldest (first) entry is deleted first as new storage requirements arise. There is no indication when this will happen. Storage time is dependent on a variety of factors such as SD card size and camera FPS.
3. SD Recording supports video only. Audio is not supported.

1. Insert a SD card into the SD card slot. The location of SD card slot is shown as image below



*NOTE: When SD card is installed, please reboot the camera*

2. To setup SD card features, you can choose either the [Web Interface](#) page or [AV200 Software](#)

### Web Interface

- i. Access the camera's web interface by typing in any web browser:

[http://ip\\_address](http://ip_address) or [http://ip\\_address/index.html](http://ip_address/index.html)

- ii. Scroll to the SD Card section

**SD Card**

Playback:

SD Card Recording:

☐ Continuous Recording

☒ Stop Continuous Recording AND Enable Event-triggered Recording

☐ Network failure

☐ Motion alarm

☐ I/O alarm

Recording Framerate:

SD Card Image Resolution

☒ Half

☐ Full

Start:

End:

- iii. Select one of the recording methods:
  - Continuous Recording to start continuously recording
  - Stop Continuous Recording AND Enable Event-triggered Recording to enable events recording for network failure, motion alarm and/or I/O alarm trigger
- iv. You will see the Start and End times once the camera starts recording (see image below). The start time represents the beginning time of the oldest recording.

**SD Card**

Recording Framerate:

Start:

End:

- v. To playback recorded video:
  1. Input the date and time of the desired video (must be set between the Start and End time).
  2. Check the "Playback SDcard video" checkbox to play the video.

**SD Card**

Playback:

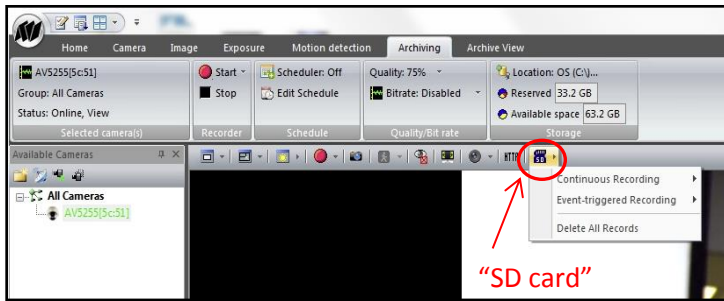


### AV200

- i. To launch the AV200 application click on the desktop icon called “AV200”



- ii. To enable recording to the SD card select the desired camera and drag it to the workspace to open a view. From the window select the SD card drop down menu. Choose:
  - Continuous Recording OR
  - Event-triggered Recording to enable events recording for network failure, motion alarm or I/O alarm



- iii. To launch the SD card playback window click on the “SD card” icon.



- iv. Set play range to full span will set the playback range to the maximum available on the SD card.
- v. Set playback range will allow the user to input the playback date and time manually.
- vi. Export play will export an .avi file for playback on most media players.

## Electrical Box Adapter (SV-EBA) Installation Instructions (Sold Separately)

### Inside the box:

- A. Electrical Box Adapter
- B. Pack of four (4) machine screws (#8-32 7/16")

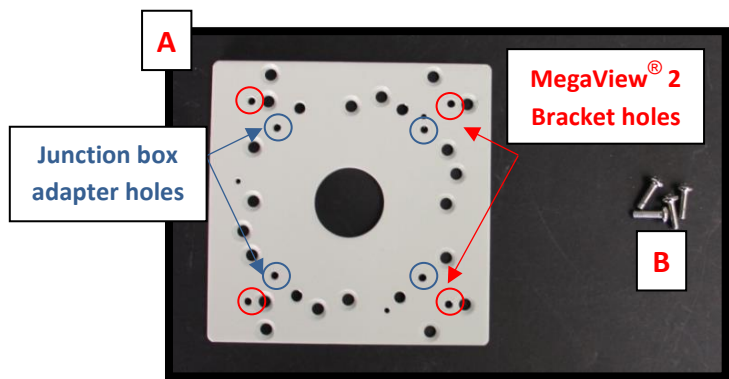


Image 16

### Not included but needed:

- Common electrical box, such as single gang box, double gang box, or square electrical boxes shown in **Image 17-1~4**.
1. Remove the electrical box adapter and hardware from the box.
  2. Attach the wall mount bracket to the electrical box adapter.
  3. Attach adapter to electrical box.

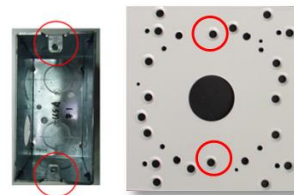


Image 17-1 Single gang box

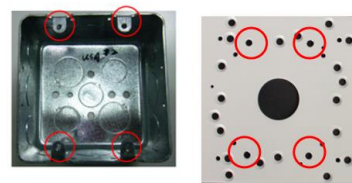


Image 17-2 Double gang box



Image 17-3 Square box

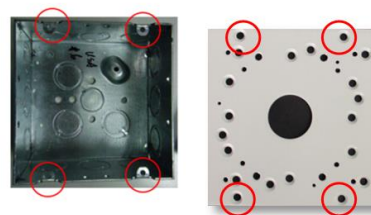


Image 17-4 Square box

## Pole Mount Adapter (AV-PMA) Installation Instructions (Sold Separately)

### Inside the box:

- A. Pole Mount Adapter
- B. 2x Small Steel Straps
- C. 2x Large Steel Straps
- D. Pack of four (4) machine screws (#8-32 5/8")

### Not included but needed:

- 3/4" NPT Conduit

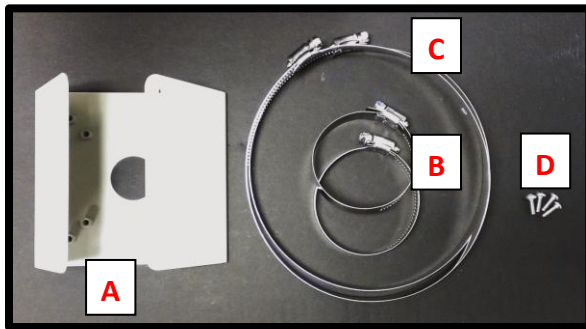


Image 18

1. Remove Pole Mount Adapter, steel Straps and hardware from the box.
2. Attach provided Junction Box Adapter (**Image 1-B**) to Pole Mount Adapter as shown in **Image 19**.
3. Remove the conduit plug on Junction box adapter and connect 3/4" NPT Conduit to Junction Box Adapter shown in **Image 19-1**.

*NOTE: Use silicon or water pipe seal tape to make sure no water leakage between conduit pipe and junction box adapter.*

4. Run Ethernet Cable and other cables (if necessary) through the Junction Box Adapter and connect to MegaView® 2 pigtail cable.
5. Attach MegaView® 2 bracket to Pole Mount Adapter as shown in **Image 20**.
6. Use the supplied two Steel Straps to attach the Pole Mount Adapter to the pole and tighten the compression screws as shown in **Image 20**.
7. To adjust MegaView® 2 bracket, please reference "Mounting the Camera", if needed.



Image 19



Image 19-1

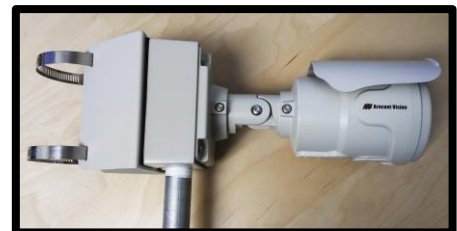


Image 20

## Corner Mount Adapter (AV-CRMA) Installation Instructions (Sold Separately)

### Inside the box:

- A. Corner Mount Adapter
- B. Pack of four (4) machine screws (#8-32 5/8"), twelve (12) screws, twelve (12) anchors, and twelve (12) washers

### Not included but needed:

- ¾" NPT Conduit

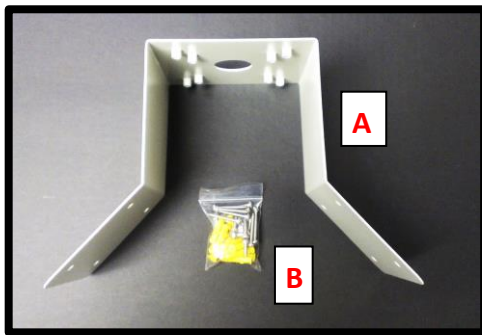


Image 21

1. Remove Corner Mount Adapter and hardware from the box.
2. Attach provided Junction Box Adapter (**Image 1-B**) to Corner Mount Adapter as shown in **Image 22**.
3. Remove the conduit plug on Junction box adapter and connect ¾" NPT Conduit to Junction Box Adapter shown in **Image 22-1**.

*NOTE: Use silicon or water pipe seal tape to make sure no water leakage between conduit pipe and junction box adapter.*

4. Run Ethernet Cable and other cables (if necessary) through the Junction Box Adapter and connect to Megaview® 2 pigtail cable.
5. Attach MegaView® 2 bracket to Corner Mount Adapter as shown in **Image 23**.
6. Using the screws provided (or other hardware) to attach the Corner Mount Adapter to an exterior 90° corner wall.
7. To adjust MegaView® 2 bracket, please reference "Mounting the Camera", if needed.



Image 22



Image 22-1



Image 23



## Important Note

### How to correctly install MegaView® 2 on a surface wall

Correct Installation:

Please connect  $\frac{3}{4}$ " NPT conduit pipe to junction box adapter as shown in **Image 24** and tighten  $\frac{3}{4}$ " NPT plugs to avoid water leakage on a surface wall as shown in **Image 25**.

NOTE: Adding water seal tape on the thread of  $\frac{3}{4}$ " NPT pipe to avoid water leakage.

Recommended!



Image 24

NOTE: Tighten  $\frac{3}{4}$ " NPT plugs



Recommended!



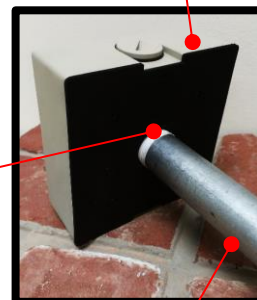
Image 25

$\frac{3}{4}$ " NPT Conduit



Junction Box Adapter

Water seal tape



$\frac{3}{4}$ " NPT Conduit



### Inappropriate Installation:

Attaching the MegaView® 2 directly onto a wall surface as shown on **Image 26**, without connecting  $\frac{3}{4}$ " NPT Conduit to Junction Box Adapter as shown on **Image 27**, or without tightening  $\frac{3}{4}$ " NPT plugs as shown on **Image 28** may result in water leakage!

**NOTE: Water damage from improper installation is not covered by the warranty!**

**Not Recommended!**



Image 26

**Not Recommended!**



Image 27

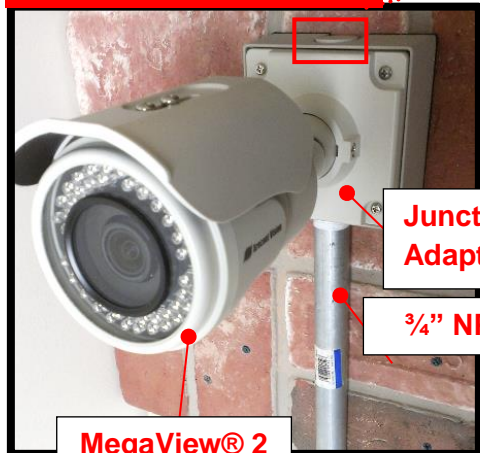


**Junction Box Adapter**



**Without connecting  $\frac{3}{4}$ " NPT**

**Not Recommended!**



**MegaView® 2**

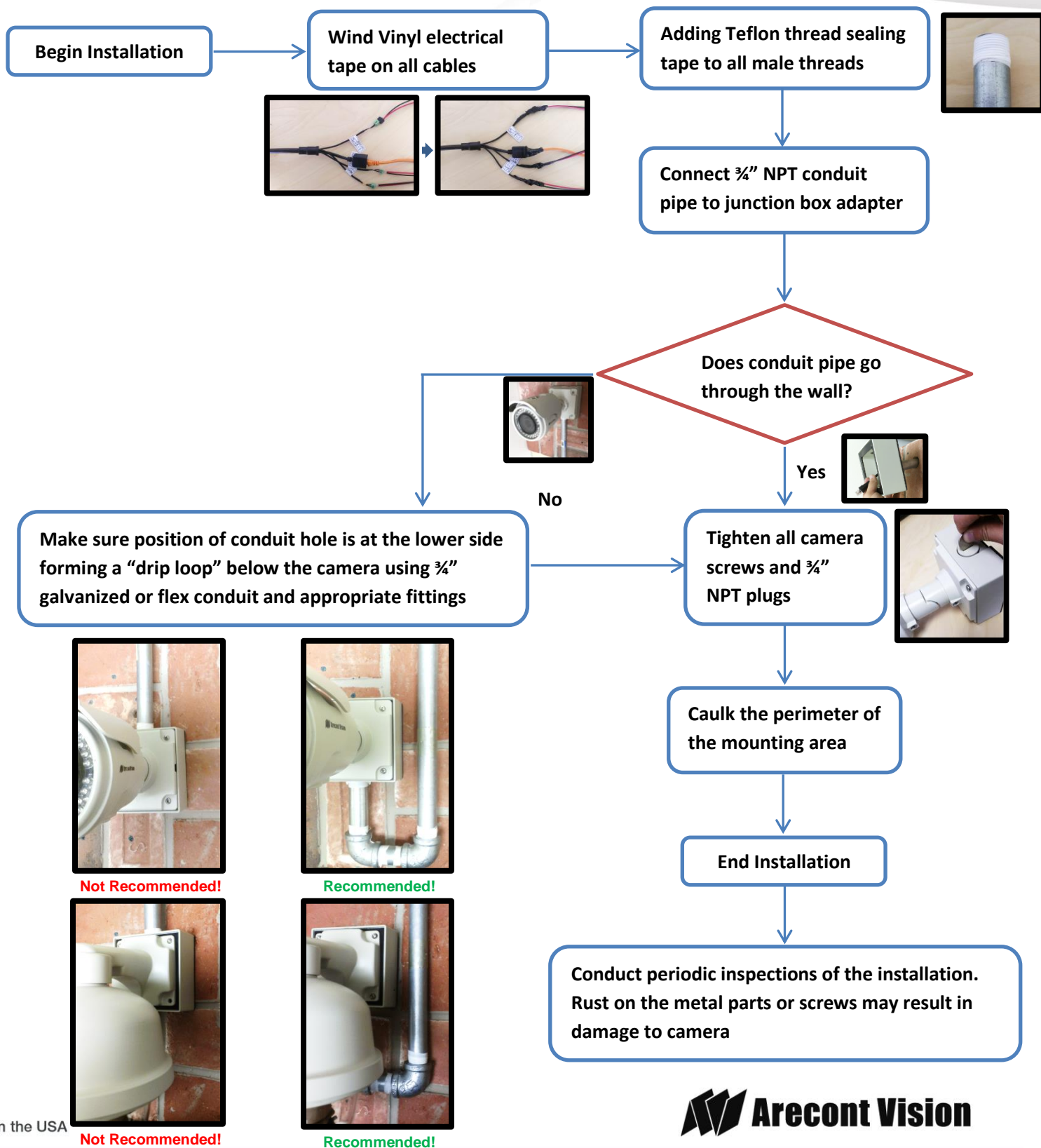
**Junction Box Adapter**

**$\frac{3}{4}$ " NPT Conduit**

**Without tightening  $\frac{3}{4}$ " NPT plugs**



## Installation Best Practices



## LED Indicators (Camera Signal)

*NOTE: To see the LED indicators, open the plug on the camera body as shown in **Image 37**.*

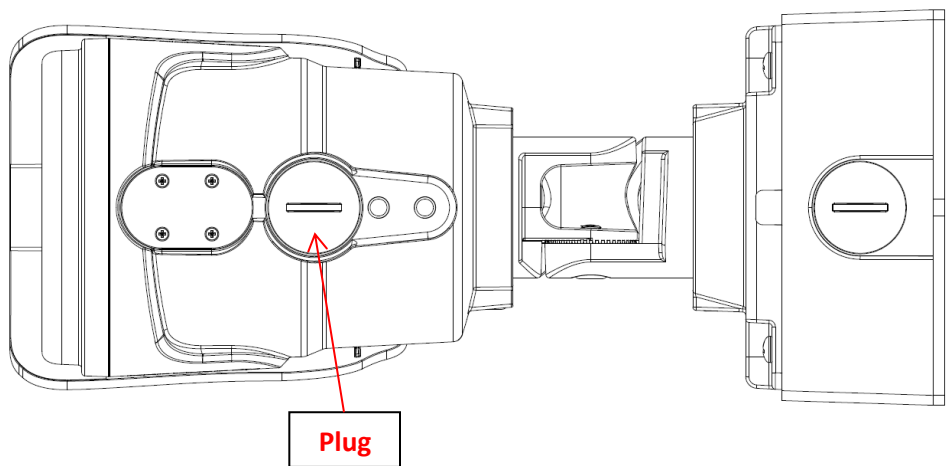


Image 27

LED	Status	Description
Yellow	Flashing	Link has been established.
	Solid	Normal Operation.
	None	No connection.
Green	Flashing	Camera has been accessed. Normal operation.
	Solid	N/A
	None	No Connection.

## Support

1. Arecont Vision FAQ Page Located at [ArecontVision.com](http://ArecontVision.com)
2. Check the following before you call:
  - ✓ Restore camera to factory default with AV100, AV200 or the camera webpage.
  - ✓ Upgrade to the latest firmware by visiting [ArecontVision.com](http://ArecontVision.com).
  - ✓ Isolate the camera on a dedicated network and test with AV100 or AV200.
  - ✓ Swap the “troubled” camera with a known good camera to see if the problem follows the camera or stays at the location.
3. Contact Arecont Vision Technical Support one of three ways:
  - 1. Online Portal : [Support.ArecontVision.com](http://Support.ArecontVision.com)**
  - 2. Phone : 1.818.937.0700 (option #1)**
  - 3. Email : [support@arecontvision.com](mailto:support@arecontvision.com)**

## Mounting Template

### Junction Box Adapter Mounting Template

