



Leading
the way in
Megapixel
video

MegaView™ Installation Manual

 **Arecont Vision**
megapixel technology...
beyond imagination

MegaView™ Installation Manual

Inside the box:

- A. Arecont Vision MegaView™
- B. Pack of four (4) wood screws and four (4) dry wall anchors
- C. Security L-key
- D. Mounting Template

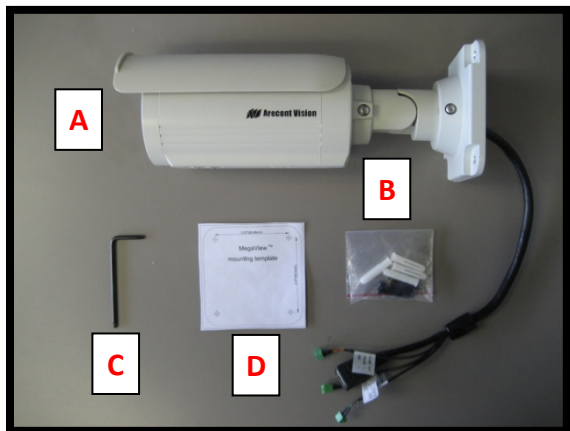


Image 1

Not included but needed:

- #1 Phillips head screw driver
- #2 Phillips head screw driver

Mounting the Camera:

1. Remove camera and hardware from the box.

*NOTE : MegaView™ has two versions, DN version and IR version, shown in **image 2**, both versions embed motorized day night switcher but only IR version supports an IR LED ring.*

NOTE : Table 1 shows current MegaView™ product configurations.



IR version

Image 2

DN version

Model	Resolution	Description
AV1325IR	1.3MP	Day/Night with IR Illuminator
AV1325DN	1.3MP	Day/Night
AV2825IR	HD: 1080p	Day/Night with IR Illuminator
AV2825DN	HD: 1080p	Day/Night

Table 1

Arecont Vision MegaView™ Installation Manual

- Using the Mounting Template, prepare the mounting provisions for camera installation.
- Use security L-key to adjust MegaView™ bracket to appropriate position. (**Image 3**)

CAUTION: Only adjust the screws with an arrow pointing to them on the bracket base and camera body (Image 4)

NOTE : Bracket screws are all security screws that are tamper proof and vandal resistant.

NOTE : Bracket with 3 axes enables easy installation in any location, including 360° camera body rotation, 90° tilt, 360° bracket rotation. (image 5)

- Align the holes in the camera with the prepared holes on the mounting surface. Attach the camera to the mounting surface with the wood screws or any other hardware that fits the mounting application. (image 6)



Image 3

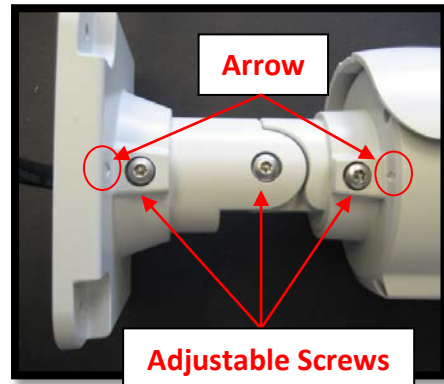


Image 4



Image 5



Image 6

5. Plug Ethernet cable into the MegaView™ PoE Female RJ45 connector. (**Image 7**)

NOTE: MegaView™ cameras are all PoE only; Auxiliary power input does not support camera but IR illuminator, heater and blower.

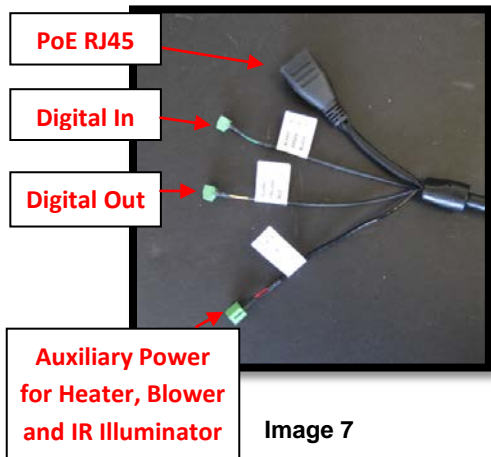


Image 7

Connecting External Power for IR Illuminator, Heater and Blower.

6. To use IR Illuminator, heater and blower, connect auxiliary power t 12~48VDC or 24VAC. (**Image 7**)

NOTE: Auxiliary power is always required if you are using a heater / blower or IR LED.

NOTE: MegaView™ cameras contain heater / blower. Heater and blower switch on 4C° (39.2 °F), Off: 7°C (44.6 °F)

*NOTE: **Table 2** shows IR Illuminator Key Parameters.*

Key Specs	
IR Leds	48 pcs
IR Wave Length	850nm
IR Distance	25 meter
IR Angle	45°
Power	3 Watts

Table 2

Connecting Digital I/O: (optional)

7. To use digital I/O, connect digital I/O with pigtail cable. (**Image 7**)

NOTE: MegaView™ DN version supports both digital input and output; IR version only supports digital input.

Electrical

Characteristics:

	Min	Max	Camera	
Input voltage (V) (measured between + and –	ON	2.9	6.3	IR & DN Versions

Arecont Vision MegaView™ Installation Manual

terminals)	OFF	0	1.3	
Output current (mA) (measured between + and – terminals)	ON	-	50	DN version Only
	OFF	-	0.1	
Applied Voltage Range: 0 - 80V				

Table 1

NOTE: Both the input and the output are electrically isolated from the rest of the camera's electrical circuitry via general-purpose photo couplers. The input is additionally protected with a serial 250 Ohm resistor, and a debouncing circuit. Duration of any input signal should be at least 5 ms to comply with the requirements of the debouncing circuit.

Yellow	OUT +
Red	OUT –
Green	IN +
Black	IN -

Table 2

Adjusting the Focus, Iris and Field of View:

- To adjust focus, iris and field of view, use security L-key to adjust external lens screws shown in **Image 8**.

*NOTE: The focus length range of MegaView™ is 4.5mm~10mm, FOV as following **Table 3**.*

H-FOV	4.5mm	10mm
AV1325IR/DN	48°	22°
AV2825IR/DN	73°	34°

Table 3

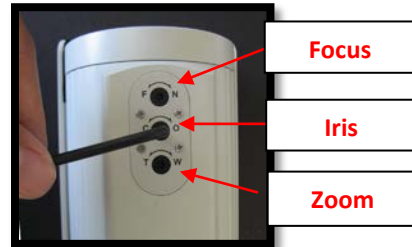


Image 8

Replacing the IR LED board:

- Unscrew glass ring (**Image 9**)
- Use Phillips screwdriver to remove IR LED board (**Image 10**)
- To replace IR LED board, unplug cable and replace new IR LED board (**Image 11**)

NOTE: Only MegaView™ IR version can accommodate a replacement IR LED board.



Image 9



Image 10

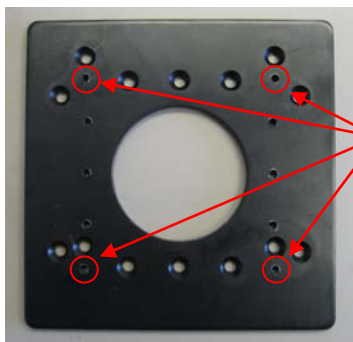
Image 11

MegaView™ Electrical Box Adapter (MV-EBA) Installation Instructions

Inside the box:

- A. Electrical Box Adapter
- B. Pack of four (4) machine screws

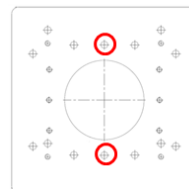
- #2 Phillips head screw driver
- Common Electrical Box, such as single gang box, double gang box, or square electrical boxes shown in **Image 13-1~4**.



**MegaView™
Bracket holes**

Image 12

- 12. Remove Electrical Box Adapter and hardware from the box.
- 13. Attach MegaView™ bracket to Electrical Box Adapter.
- 14. Attach Electrical Box Adapter to Electrical Box.



Not included but needed:

Image 13-1 Single gang box

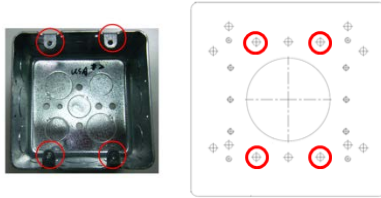


Image 13-3 Square box

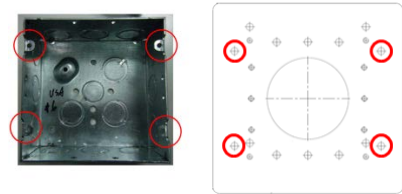


Image 13-2 Double gang box

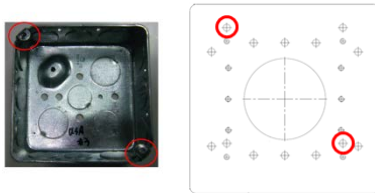


Image 13-4 Square box

MegaView™ Pole Mount Adapter Installation Instructions

Inside the box:

- A. Pole Mount Adapter
- B. 2x Compress Fittings
- C. 2x Small Steel Straps
- D. 2x Large Steel Straps
- E. Pack of four (4) machine screws

Not included but needed:

- #2 Phillips head screw driver

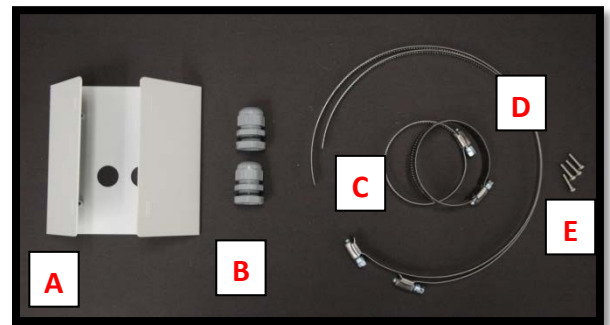


Image 14

NOTE: MegaView™ and MegaDome™ share same pole mount adapter.

15. Remove Pole Mount Adapter, steel Straps and hardware from the box.

Arecont Vision MegaView™ Installation Manual

16. Attach MegaView™ bracket to Pole Mount Adapter as shown in **Image 15**.

17. Use the supplied two Steel Straps to attach the Pole Mount Adapter to the pole and tighten the compression screws as shown in **Image 16**.

18. To adjust MegaView™ bracket, please reference "**Mounting the Camera**", if needed.



Image 16

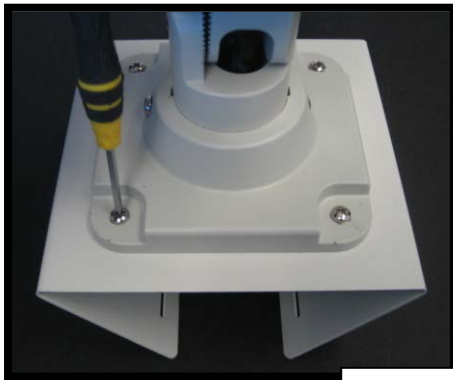


Image 15

MegaView

**Compression
Screws**

Adapter Installation Instructions
Not included but needed:

Inside the box:

- A. Corner Mount Adapter
- B. 2x Compression Fittings
- C. Pack of four (4) machine screws
- D. 2x Packs of four (4) wood screws and four (4) dry wall anchors

- #2 Phillips head screw driver

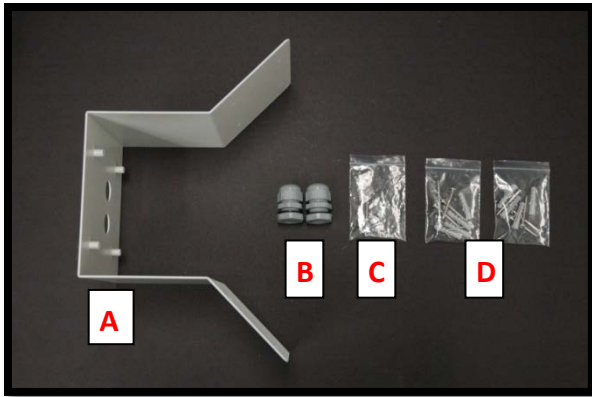


Image 17

NOTE: MegaView™ and MegaDome™ share same corner mount adapter.

19. Remove Corner Mount Adapter and hardware from the box.
20. Attach MegaView™ bracket to Corner Mount Adapter as shown in **Image 18**.
21. Using the screws provided (or other hardware) to attach the Corner Mount Adapter to an exterior 90° corner wall as shown in **Image 19**.

22. To adjust MegaView™ bracket, please reference "**Mounting the Camera**", if needed.

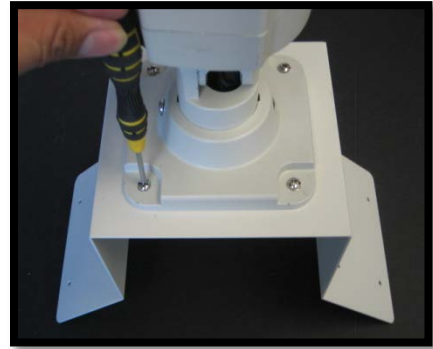


Image 18

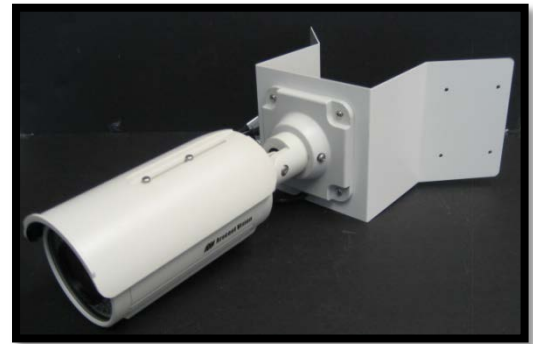


Image 19

Leading
the **way** in
Megapixel
video

Arecont Vision

425 E. Colorado Street, 7th Floor
Glendale, CA 91205

support@arecontvision.com

www.arecontvision.com

+1.818.937.0700

877.CAMERA.8

