

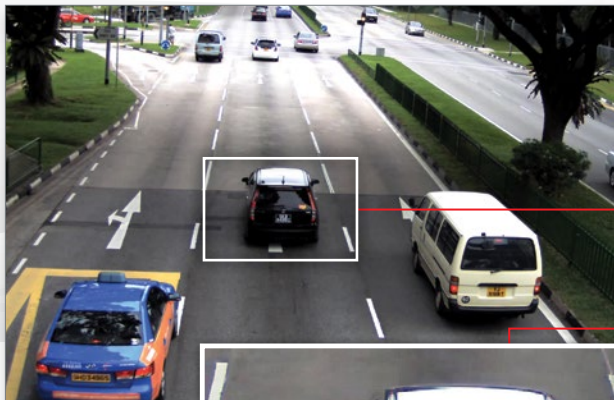
MegaVideo® Compact IP Megapixel Cameras

1.2–10MP H.264 Single or Dual Sensor True Day/Night Indoor Box-Style Compact IP Cameras with WDR (Wide Dynamic Range) Models

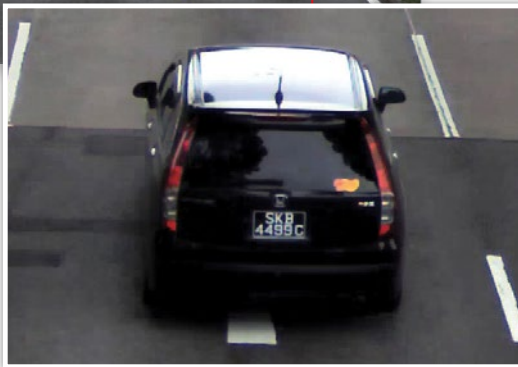


Single Sensor

Dual Sensor



Wide Field of View



Zoom-In Detail

More Resolution and More Choices – MegaVideo® Compact

MegaVideo Compact multi-megapixel cameras provide ample resolution to zoom-in for details in live or recorded video. These box camera solutions are available at 1.2-, 1.3-, 1080p, 3-, 5- or 10-megapixel resolutions with the fastest frame rates in the industry. MegaVideo Compact cameras are “build to order” solutions: select the best lens, auto-iris, True Day/Night, WDR (Wide Dynamic Range), color-only and enclosures for specific applications (sold separately).

Highlighted Features:

- 1.2- to 10-Megapixel Resolution
- Small Size for Flexible Mounting Options
- Many Lenses to Choose From
- 3MP WDR + 1.2MP B/W Dual Sensor Camera Offers Strong Performance in Low Light and High Contrast Lighting Conditions
- Optional True WDR up to 100dB at Full Resolution: See Clearly in Shaded and Bright Light Conditions Simultaneously on Dual Sensor and Some 1080p and 3MP Models
- Binning Mode for Strong Low Light Performance on 3MP, 5MP and 10MP Models
- Day/Night, Color-Only or Auto-Iris Options
- True Day/Night Functionality with Removable IR Cut Filter
- Use with Arecont Vision Housings, or as a Standalone Camera (Dual Sensor Model is Incompatible with D4 Series Housings)
- PoE and Auxiliary Power: 12–48V DC/24V AC (Auxiliary Power Not Available for Dual Sensor Model)
- Dual Encoder H.264/MJPEG
- Privacy Mask, Motion Detection, Flexible Cropping, Bit Rate Control, Multi-Streaming and Forensic Zooming
- ONVIF Profile S and PSIA Conformant
- Fast Frame Rates
- Casino Mode™ in 1080p Models (Maintains 30fps or Higher)



Customizable Lens and Housing Options



Dual Sensor (AV3236)



True Day/Night with IR Cut Filter



Pixel Binning Mode on 3, 5, and 10MP Models

10MP
80P

Dual Mode: 1080p/10MP



Wide Dynamic Range Available on Some 1080p and 3MP Models

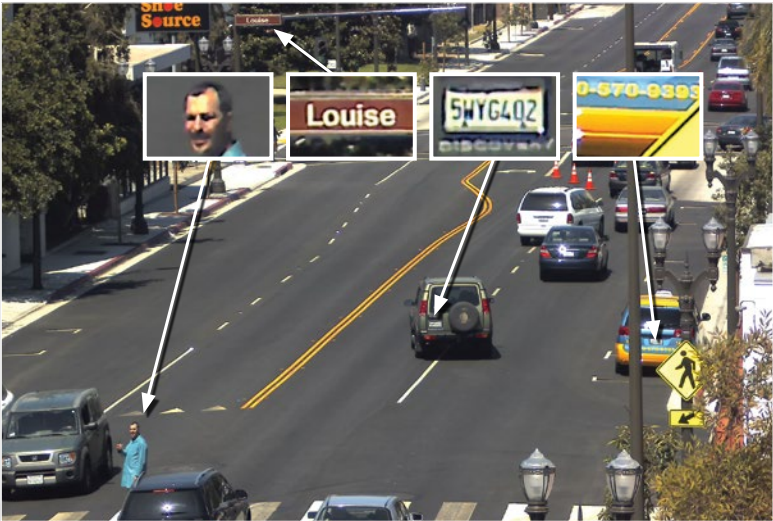


Casino Mode™ Maintains at Least 30fps on AV2115 Models



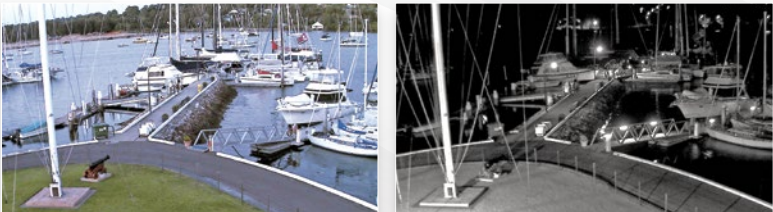
Dual Encoder H.264/MJPEG

See Every Detail with Forensic Zooming



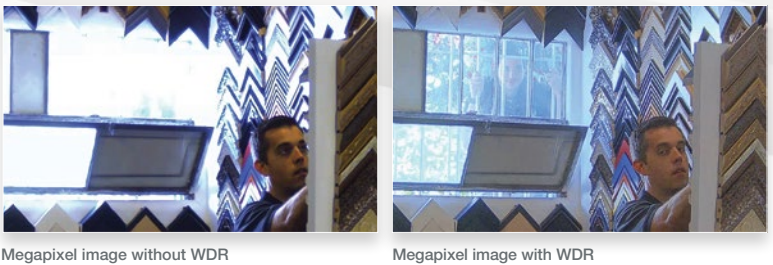
Arecont Vision megapixel cameras deliver outstanding resolution to capture every detail whether viewing live or recorded/archived video. With the ability to digitally Pan-Tilt-Zoom (PTZ) images, you can view the details you need to see at any time. Examples are applications requiring license plate, face and object recognition. The superior resolution of megapixel cameras also results in an extended field of view, allowing them to do the work of multiple conventional cameras—all without the need and associated expense of system operators having to “catch” activities of interest as they occur using conventional PTZ technology.

Enhanced Low Light Performance



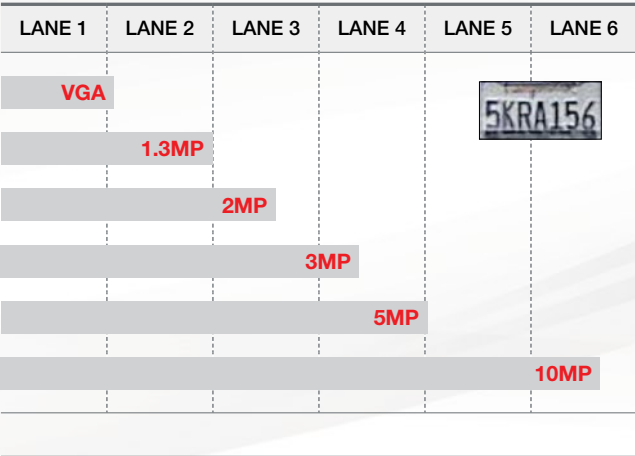
Low light performance is a critical element to any surveillance project. In addition to offering cameras with True Day/Night capabilities, some Arecont Vision megapixel cameras feature low light enhancing technology such as pixel binning and dual sensor operation. 3, 5 and 10MP MegaVideo Compact cameras can be used in pixel binning mode at night to improve low light performance. If a project requires extreme low light, Arecont Vision offers the dual sensor AV3236 which has a 1.3MP true monochrome sensor that provides the best low light performance in the industry.

MegaDynamic® Wide Dynamic Range (WDR)



Covering Wider Areas with Fewer Cameras

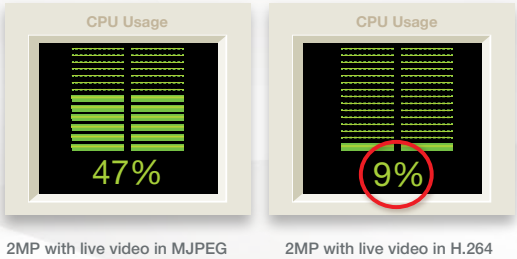
In applications where large areas need to be secured, Arecont Vision megapixel cameras provide maximum return on investment. As an example, if a VGA camera could cover one lane of traffic, a 10MP camera could cover up to 5.5 lanes at the same resolution. In addition to their performance advantages, Arecont Vision megapixel cameras minimize equipment and installation labor costs resulting in less cameras, lenses, NVR licenses and supporting accessories.



Compliant H.264 Compression

MegaVideo Compact's compliant implementation of H.264 allows full frame rates and full resolution without sacrificing image quality and offers H.264 and MJPEG dual compression support with simultaneous streaming. With bit rate control, the CPU load is decreased at both the client (decompression) side and the server/storage side, allowing lower bandwidth and storage relative to MJPEG. Real Time Streaming Protocol (RTSP) allows for compatibility with media players such as Apple QuickTime®, VLC and others.

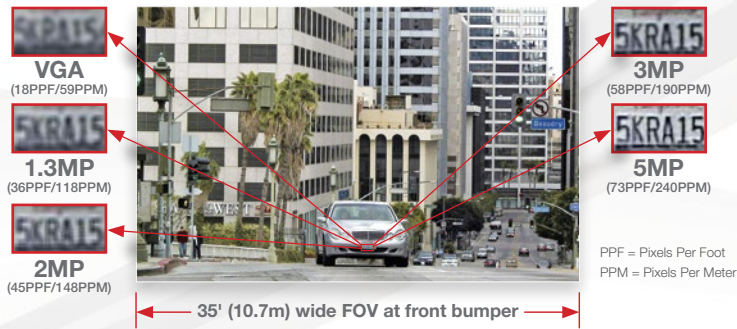
H.264 Decompression (example)



Users can achieve clear images in extreme lighting conditions with MegaVideo Compact WDR cameras in resolutions of 1080p and 3MP. Wide Dynamic Range up to 100dB at full resolution balances light and dark areas in the same scene, such as in the lobby of an office building with large windows, the loading dock at a distribution facility or many retail environments.

Increased Resolution

Whether for license plate recognition, face recognition or simply general situational awareness, Arecont Vision provides a resolution to meet the need. In applications where greater detail is needed, a higher resolution camera can be selected to ensure the required pixel density is delivered. In this example the pixel density increases for each higher resolution megapixel camera covering the same field of view.



MegaVideo® Compact D4 Series



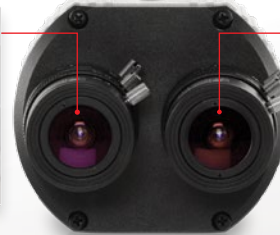
MegaVideo Compact D4F/D4SO indoor or indoor/outdoor all-in-one solutions integrate a 1.3-, 1080p, 3- or 5-megapixel camera with fast frame rates and an IR corrected vari-focal lens into an economical dome housing. The D4SO housing is IP66 environmental rated and IK-10 impact-resistant for indoor and outdoor use.

MegaVideo® Compact with Dual Sensor Functionality

Arecont Vision differentiates its cameras from the rest of the industry with unique features, and the dual sensor MegaVideo Compact is a great example. The dual sensor MegaVideo Compact camera is two cameras in one. It can be programmed to use the 3MP color sensor in daylight conditions and 1.3MP monochrome sensor in low light, or it can stream video from both sensors simultaneously.



WDR Color Sensor



Monochrome (Black and White)
Low Light Sensor

Product Comparison



Model	Resolution	Minimum Illumination	Max Frame Rate @ Full Resolution	H.264/MJPEG	Color	True Day/Night	WDR	Binning Mode	Casino Mode™	Auto-Iris
AV1115v1	1.3MP	1280 x 1024	Color: 0.1 Lux	42fps	•	•				
AV1115DNv1	1.3MP	1280 x 1024	Color: 0.1 Lux B/W: 0 Lux, IR Sensitive	42fps	•	•	•			
AV1115DNA1v1*	1.3MP	1280 x 1024	Color: 0.1 Lux B/W: 0 Lux, IR Sensitive	42fps	•	•	•			•
AV2115v1	1080p	1920 x 1080	Color: 0.1 Lux	32fps	•	•			•	
AV2115DNv1	1080p	1920 x 1080	Color: 0.1 Lux B/W: 0 Lux, IR Sensitive	32fps	•	•	•		•	
AV2115DNA1v1*	1080p	1920 x 1080	Color: 0.1 Lux B/W: 0 Lux, IR Sensitive	32fps	•	•	•		•	•
AV2116DNv1**	1080p	1920 x 1080	Color: 0.3 Lux B/W: 0 Lux, IR Sensitive	32fps	•	•	•	•		
AV3115v1	3MP	2048 x 1536	Color (Non-Binning): 0.3 Lux Color (Binning): 0.15 Lux	21fps	•	•		•		
AV3115DNv1	3MP	2048 x 1536	Color (Non-Binning): 0.3 Lux Color (Binning): 0.15 Lux B/W: 0 Lux, IR Sensitive	21fps	•	•	•	•		
AV3115DNA1v1*	3MP	2048 x 1536	Color (Non-Binning): 0.3 Lux Color (Binning): 0.15 Lux B/W: 0 Lux, IR Sensitive	21fps	•	•	•	•		•
AV3116DNv1**	3MP	2048 x 1536	Color (Non-Binning): 0.3 Lux Color (Binning): 0.15 Lux B/W: 0 Lux, IR Sensitive	21fps	•	•	•	•		
AV5115v1	5MP	2592 x 1944	Color (Non-Binning): 0.3 Lux Color (Binning): 0.15 Lux	14fps	•	•		•		
AV5115DNv1	5MP	2592 x 1944	Color (Non-Binning): 0.3 Lux Color (Binning): 0.15 Lux B/W: 0 Lux, IR Sensitive	14fps	•	•	•	•		
AV5115DNA1v1*	5MP	2592 x 1944	Color (Non-Binning): 0.3 Lux Color (Binning): 0.15 Lux B/W: 0 Lux, IR Sensitive	14fps	•	•	•	•		•
AV10115v1*	10MP 1080p	3648 x 2752 1920 x 1080	Color (Non-Binning): 0.42 Lux Color (Binning): 0.21 Lux	7fps @ 10MP 32fps @ 1080p	•	•		•		
AV10115DNv1*	10MP 1080p	3648 x 2752 1920 x 1080	Color (Non-Binning): 0.42 Lux Color (Binning): 0.21 Lux B/W: 0 Lux, IR Sensitive	7fps @ 10MP 32fps @ 1080p	•	•	•	•		
AV10115DNA1v1*	10MP 1080p	3648 x 2752 1920 x 1080	Color (Non-Binning): 0.42 Lux Color (Binning): 0.21 Lux B/W: 0 Lux, IR Sensitive	7fps @ 10MP 32fps @ 1080p	•	•	•	•		•
AV3236*	Color Sensor	3MP	2048 x 1536	0.2 Lux	18fps	•	•	•		
	B/W Sensor	1.2MP	1280 x 960	0 Lux, IR Sensitive	40fps	•	•	•		

Housing Options

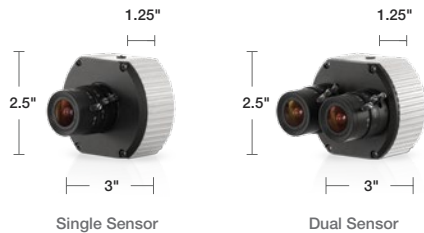
(Example: D4SO-AV5115DNv1)

D4F-	Indoor Flush Mount Housing
D4SO-	Indoor/Outdoor Surface Mount Housing

* Not available in D4 series housings
** Not available in D4F housings



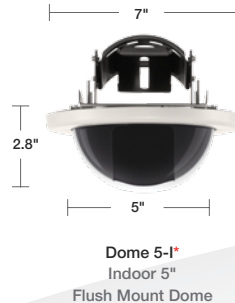
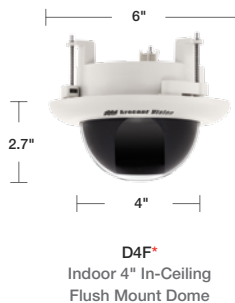
Configurations



MegaVideo® Compact D4 Series



Housings



* Not compatible with Dual Sensor model



Global Sales and Support

Arecont Vision is the leading manufacturer of high-performance megapixel IP cameras and associated software.

Americas

Los Angeles, CA, USA
Arecont Vision, LLC. Headquarters
425 E. Colorado St., 7th Floor
Glendale, CA 91205, USA

Phone: +1.818.937.0700
Toll Free: 877.CAMERA.8
Fax: +1.818.937.0464

Sales

Phone: +1.818.937.0700 x 3
Email: avsales@arecontvision.com

Support

Phone: +1.818.937.0700 x 1
Email: support@arecontvision.com

Latin America

Email: latam.sales@arecontvision.com

EMEA

Düsseldorf, Germany
Phone: +49.69.6953.4600
Email: europe.sales@arecontvision.com

Moscow, Russia
CJSC Arecont Vision
Phone: +7.495.649.0577
Fax: +7.495.221.5227
Email: info@arecontvision.ru

Middle East
Email: mena.sales@arecontvision.com

Africa
Email: africa.sales@arecontvision.com

APAC

China
Phone: +86.180.0179.1799
Alt. Phone: +1.818.937.0700 x 3
Fax: +1.818.649.3404
Email: apac.sales@arecontvision.com