

# MegaDome® 2 Megapixel IP Cameras

1.2–10MP H.264 All-in-One Motorized P-Iris Lens Day/Night IR Indoor/Outdoor Dome IP Cameras with Wide Dynamic Range (WDR) and STELLAR™ Low Light Models



Motorized Lens with IR Illuminator

Motorized Lens



Wide Field of View



Zoom-In Details

## All-in-One Solutions – MegaDome® 2

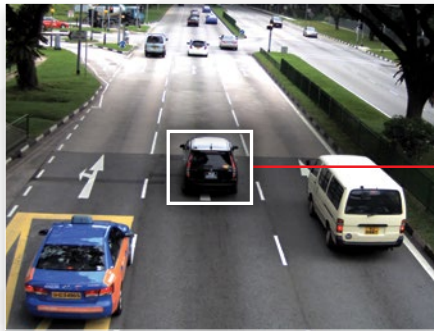
MegaDome® 2 multi-megapixel cameras provide superior resolution to zoom-in for details in live or recorded video. These indoor/outdoor all-in-one solutions integrate a 1.2-, 1.3-, 1080p, 3-, 5- or 10-megapixel (MP) camera with fast frame rates and an IR corrected motorized wide angle or telephoto vari-focal lens into an IP66 environmental rated and IK-10 impact-resistant dome housing. Remote focus and remote zoom make MegaDome® 2 easy to install and manage. MegaDome® 2 cameras are also available in manual lens models.

- |  |  |   |                                      |   |  |                                |   |                                   |
|--|--|---|--------------------------------------|---|--|--------------------------------|---|-----------------------------------|
|  |  |   |                                      |   |  |                                |   |                                   |
| Integrated Motorized Lens with Remote Focus and Zoom (AM/PM Version) | P-Iris Control for Best Depth of Field and Image Clarity (PM Models) | Wide Dynamic Range Available on Some 1080p and 3MP Models | Dual Mode: 1080p/10MP on 10MP Models | STELLAR™ Low Light Technology on 1.2MP Models | Wide Angle or Telephoto Lens Option                    | IR LEDs (IR Models)            | Impact / Weather Resistant IK-10 and IP66 Rated | True Day/Night with IR Cut Filter |
|  |  |   |                                      |   |  |                                |   |                                   |
| All-in-One Dome Solution   | Pixel Binning Mode on 3, 5, and 10MP Models                          | CorridorView™ with 90° Image Flip (-S Models)             | SDHC Card Slot (-S Models)           | Dual Encoder H.264/MJPEG                      | Casino Mode™ Maintains at Least 30fps on AV2255 Models | Audio Input/Output (-A Models) | Heater (-H Models)                              |                                   |

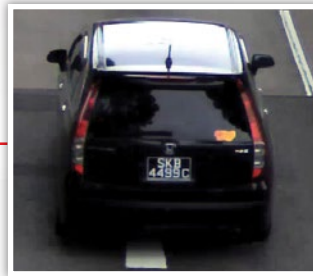
# MegaDome® 2 Megapixel IP Cameras

## Highlighted Features:

- Remote Focus/Zoom Motorized Auto-Iris or P-Iris Lens (AM/PM Models)
- P-Iris Control to Get Best Depth of Field and Image Clarity (PM Models)
- Wide Angle or Telephoto Lens Options
- Optional True WDR up to 100dB at Full Resolution Available on Some 1080p and 3MP Models: See Clearly in Shaded and Bright Light Conditions Simultaneously
- STELLAR™ Low Light Technology Reduces Motion Blur, Noise and Storage Requirements, While Enhancing Contrast and Allowing Color Imaging in Near Complete Darkness on 1.2MP Models
- True Day/Night Functionality with Mechanical IR Cut Filter and Optional IR LEDs
- Binning Mode for Strong Low Light Performance on 3MP, 5MP and 10MP Cameras
- Casino Mode™ Guarantees Continuous 30fps Frame Rate Required by Gaming Industry Regulations (AV2255 Models)
- CorridorView™ Allows 90° Image Rotation for Better Coverage in Hallways and Corridors
- Dual Encoder H.264/MJPEG
- Privacy Mask, Motion Detection, Flexible Cropping, Bit Rate Control, Multi-Streaming, Forensic Zooming and Non-Integer Scaling
- Fast Frame Rates
- Heater and Optional Audio and IR LEDs (No Heater Required for WDR Models)
- SDHC Card Slot for Onboard Storage (-S Models)
- Total PoE Solution (No External Power Required for Heater and IR LEDs)
- Outdoor Rated IP66 and IK-10 Impact-Resistant Housing
- PoE and Auxiliary Power: 12–48V DC/24V AC
- Easily Adjustable 3-Axis Gimbal
- PSIA Conformant
- User-Friendly Web Interface
- Made in the USA



Wide Field of View



Telephoto Field of View

## See Details with Forensic Zooming

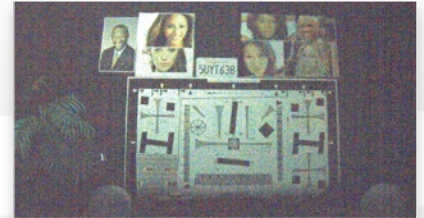
Arecont Vision MegaDome® 2 megapixel cameras deliver outstanding resolution to capture every detail whether viewing live or recorded/archived video. With the ability to digitally Pan-Tilt-Zoom (PTZ) images, you can view the details you need to see at any time, such as license plates, faces and other objects of interest. The superior resolution of MegaDome® 2 megapixel cameras along with their varying fields of view allows them to do the work of multiple conventional cameras and provide critical forensic information—all without the need and associated expense of system operators having to “catch” activities of interest as they occur.

## STELLAR™ Technology and Enhanced Low Light Performance

MegaDome® 2 now features a 1.2MP model with Spatio Temporal Low Light Architecture (STELLAR™) technology, which allows for color imaging in near complete darkness. Arecont Vision® STELLAR™ technology utilizes a patented algorithm that reduces noise, motion blur, bit rate and storage requirements. Along with adaptive contrast enhancement, MegaDome® 2 with STELLAR™ has superior low light sensitivity, making it capable of covering areas where very little light is present.



Color Image without STELLAR™ Technology at .01 Lux



Color Image with STELLAR™ Technology at .01 Lux

In addition to STELLAR™ models, all MegaDome® 2 camera models are equipped with Day/Night operation, and MegaDome® 2 cameras that are 3MP or higher include pixel binning to reduce noise. These functionalities along with integrated IR illumination provide a winning combination in complete darkness.

## MegaDynamic® Wide Dynamic Range (WDR)

Users can achieve clear images in extreme lighting conditions with MegaDome® 2 WDR cameras in resolutions of 1080p and 3MP. Wide Dynamic Range up to 100dB at full resolution balances light and dark areas in the same scene, such as in the lobby of an office building or the loading dock at a distribution facility. Optional IR illuminators provide coverage in total darkness for a 24-hour solution.



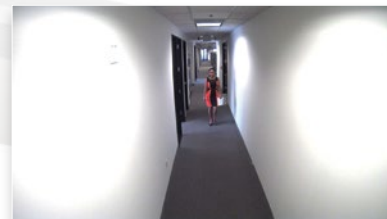
Megapixel image without WDR



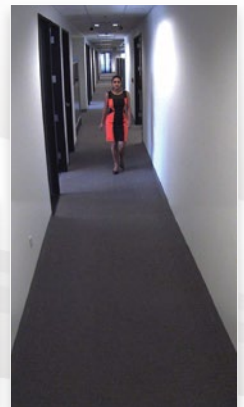
Megapixel image with WDR

## CorridorView™

With CorridorView™, MegaDome® 2 can rotate or flip pixels in 90° increments. This works great for narrow hallways where pixels are often wasted capturing the surrounding walls.



Standard View



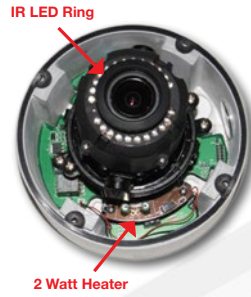
CorridorView™

## Total PoE Solution

No additional power wiring is needed for the camera, the heater and IR LED ring.

## IR LED Key Specs

- 850nm LEDs (x24)
- 20m IR Distance (Max)
- 40° IR Angle
- MTBF: 82,442 Hours



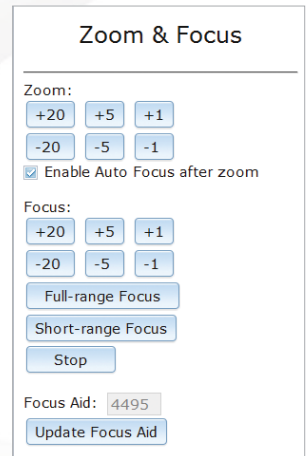
## Telephoto P-Iris Lens Option

MegaDome® 2 cameras are available with motorized telephoto lenses, further boosting their flexibility as all-in-one solutions. Telephoto lenses offer a broad optical range for every sensor resolution in the MegaDome® 2 family and feature P-iris technology to achieve the best possible image quality.

Optical Range Per Sensor	
1080p	8–22mm
1080p WDR	8–22mm
3MP	8–22mm
3MP WDR	8–22mm
5MP	9–22mm
10MP WDR	12–22mm

## Remote Focus/Zoom with User-Friendly Web Interface

For easy installation, MegaDome® 2 can be installed without locally adjusting the field of view or focus. Remote focus and remote zoom can be controlled through the camera webpage. Just click “short range focus” or “full range focus” to get a clear image through the IK-10 rated dome bubble. The added P-iris functionality provides an automatic, precise iris control. Short or full range focus scan functions analyze the local or full scene to determine the best focus for the chosen field of view.



### Additional Benefits Include:

- Fine tuning for a better image after installation
- Quicker installation
- Ability to choose wide or telephoto depending on application requirements
- P-iris is designed to provide improvements in image quality and depth of field

## Product Comparison

Model	Resolution		Minimum Illumination	Lens	Max Frame Rate @ Full Resolution	Day/Night	WDR	Binning Mode	Remote Focus/Zoom	IR	Heater	Audio	Auto Iris Lens	P-Iris Lens	P-Iris Telephoto Lens	Manual Lens	SDHC Card
AV1255PM-SH*	1.2MP	1280 x 1024	Color: 0.02 Lux B/W: 0.002 Lux, IR Sensitive	3–9mm, 1/3", F1.2, RZ, RF, P-Iris, H-FOV = 92°–31°	37fps	•			•		•			•			•
AV1255PMIR-SH*	1.2MP	1280 x 1024	Color: 0.02 Lux B/W: 0.002 Lux, IR Sensitive	3–9mm, 1/3", F1.2, RZ, RF, P-Iris, H-FOV = 92°–31°	37fps	•			•	•	•			•			•
AV1255DN-H	1.3MP	1280 x 1024	Color: 0.1 Lux B/W: 0 Lux, IR Sensitive	3.4–10.5mm, 1/2.5", F1.6, H-FOV = 62°–24°	42fps	•					•					•	
AV2255DN-H	1080p	1920 x 1080	Color: 0.1 Lux B/W: 0 Lux, IR Sensitive	3.4–10.5mm, 1/2.5", F1.6, H-FOV = 93°–36°	32fps	•					•					•	
AV2255AM-H	1080p	1920 x 1080	Color: 0.1 Lux B/W: 0 Lux, IR Sensitive	3–9mm, 1/2.7", F1.2, RZ, RF, Auto-Iris, H-FOV = 115°–37°	32fps	•			•		•		•				•
AV2255PMIR-SH	1080p	1920 x 1080	Color: 0.1 Lux B/W: 0 Lux, IR Sensitive	2.8–8mm, 1/2.7", F1.2, H-FOV = 120°–44°	31fps	•			•	•	•			•			•
AV2255PMIR-SAH	1080p	1920 x 1080	Color: 0.1 Lux B/W: 0 Lux, IR Sensitive	2.8–8mm, 1/2.7", F1.2, H-FOV = 120°–44°	31fps	•			•	•	•			•			•
AV2255PMTIR-SH	1080p	1920 x 1080	Color: 0.1 Lux B/W: 0 Lux, IR Sensitive	8–22mm, 1/2.7", F1.6, RZ, RF, P-Iris, Telephoto, H-FOV = 42°–16°	31fps	•			•	•	•			•			•
AV2256DN	1080p	1920 x 1080	Color: 0.3 Lux B/W: 0 Lux, IR Sensitive	3.4–10.5mm, 1/2.5", F1.6, H-FOV = 68°–26°	30fps	•	•				•					•	
AV2256PM	1080p	1920 x 1080	Color: 0.3 Lux B/W: 0 Lux, IR Sensitive	3–9mm, 1/3.2", F1.2, RZ, RF, P-Iris, H-FOV = 82°–27°	30fps	•	•		•	•	•			•			•
AV2256PMIR-S	1080p	1920 x 1080	Color: 0.3 Lux B/W: 0 Lux, IR Sensitive	3–9mm, 1/3.2", F1.2, RZ, RF, P-Iris, H-FOV = 82°–27°	30fps	•	•		•	•	•			•			•
AV2256PMTIR-S	1080p	1920 x 1080	Color: 0.3 Lux B/W: 0 Lux, IR Sensitive	8–22mm, 1/2.7", F1.6, RZ, RF, P-Iris, Telephoto, H-FOV = 30°–12°	30fps	•	•		•	•	•			•			•
AV3255DN-H	3MP	2048 x 1536	Color (Non-Binning): 0.3 Lux Color (Binning): 0.15 Lux B/W: 0 Lux, IR Sensitive	3.4–10.5mm, 1/2.5", F1.6, H-FOV = 73°–28°	21fps	•		•			•					•	
AV3255AM-H	3MP	2048 x 1536	Color (Non-Binning): 0.3 Lux Color (Binning): 0.15 Lux B/W: 0 Lux, IR Sensitive	3.6–9mm, 1/2.5", F1.8, RZ, RF, Auto-Iris, H-FOV = 76°–28°	21fps	•		•	•		•		•				•
AV3255PMIR-SH	3MP	2048 x 1536	Color (Non-Binning): 0.3 Lux Color (Binning): 0.15 Lux B/W: 0 Lux, IR Sensitive	2.8–8mm, 1/2.5", F1.2, H-FOV = 94°–34°	21fps	•			•	•	•			•			•
AV3255PMTIR-SH	3MP	2048 x 1536	Color (Non-Binning): 0.3 Lux Color (Binning): 0.15 Lux B/W: 0 Lux, IR Sensitive	8–22mm, 1/2.7", F1.6, RZ, RF, P-Iris, Telephoto, H-FOV = 29°–12°	21fps	•		•	•	•	•			•			•
AV3256DN	3MP	2048 x 1536	Color (Non-Binning): 0.3 Lux Color (Binning): 0.15 Lux B/W: 0 Lux, IR Sensitive	3.4–10.5mm, 1/2.5", F1.6, H-FOV = 72°–28°	21fps	•	•				•					•	
AV3256PM	3MP	2048 x 1536	Color (Non-Binning): 0.3 Lux Color (Binning): 0.15 Lux B/W: 0 Lux, IR Sensitive	3–9mm, 1/3.2", F1.2, RZ, RF, P-Iris, H-FOV = 87°–29°	21fps	•	•		•	•	•			•			•
AV3256PMIR-S	3MP	2048 x 1536	Color (Non-Binning): 0.3 Lux Color (Binning): 0.15 Lux B/W: 0 Lux, IR Sensitive	3–9mm, 1/3.2", F1.2, RZ, RF, P-Iris, H-FOV = 87°–29°	21fps	•	•		•	•	•			•			•
AV3256PMIR-SA	3MP	2048 x 1536	Color (Non-Binning): 0.3 Lux Color (Binning): 0.15 Lux B/W: 0 Lux, IR Sensitive	3–9mm, 1/3.2", F1.2, RZ, RF, P-Iris, H-FOV = 87°–29°	21fps	•	•		•	•	•			•			•
AV3256PMTIR-S	3MP	2048 x 1536	Color (Non-Binning): 0.3 Lux Color (Binning): 0.15 Lux B/W: 0 Lux, IR Sensitive	8–22mm, 1/2.7", F1.6, RZ, RF, P-Iris, Telephoto, H-FOV = 32°–12°	21fps	•	•		•	•	•			•			•
AV5255DN-H	5MP	2592 x 1944	Color (Non-Binning): 0.3 Lux Color (Binning): 0.15 Lux B/W: 0 Lux, IR Sensitive	3.4–10.5mm, 1/2.5", F1.6, H-FOV = 92°–36°	14fps	•			•		•					•	
AV5255AM-H	5MP	2592 x 1944	Color (Non-Binning): 0.3 Lux Color (Binning): 0.15 Lux B/W: 0 Lux, IR Sensitive	3.6–9mm, 1/2.5", F1.6, H-FOV = 92°–36°	14fps	•		•	•		•		•				•
AV5255PMIR-SH	5MP	2592 x 1944	Color (Non-Binning): 0.3 Lux Color (Binning): 0.15 Lux B/W: 0 Lux, IR Sensitive	3–8mm, 1/2.5", F1.4, H-FOV = 113°–43°	14fps	•			•	•	•			•			•
AV5255PMIR-SAH	5MP	2592 x 1944	Color (Non-Binning): 0.3 Lux Color (Binning): 0.15 Lux B/W: 0 Lux, IR Sensitive	3–8mm, 1/2.5", F1.4, H-FOV = 113°–43°	14fps	•			•	•	•			•			•
AV5255PMTIR-SH	5MP	2592 x 1944	Color (Non-Binning): 0.3 Lux Color (Binning): 0.15 Lux B/W: 0 Lux, IR Sensitive	9–22mm, 1/2.5", F2.0, RZ, RF, P-Iris, Telephoto, H-FOV = 38°–16°	14fps	•		•	•	•	•			•			•
AV10255PMIR-SH	10MP	3648 x 2752	Color (Non-Binning): 0.3 Lux Color (Binning): 0.15 Lux B/W: 0 Lux, IR Sensitive	4–8mm, 1/2.3", F1.6, H-FOV = 89°–47°	7fps	•			•	•	•			•			•
AV10255PMTIR-SH	10MP	3648 x 2752	Color (Non-Binning): 0.3 Lux Color (Binning): 0.15 Lux B/W: 0 Lux, IR Sensitive	12–22mm, 1/2.3", F2.2, RZ, RF, P-Iris, Telephoto, H-FOV = 30°–17°	7fps	•			•	•	•			•			•

\*STELLAR™ Note: All part numbers with -S have SDHC Card Slot, CorridorView™ w/ 90° Image Flip, Non-Integer Scaling (except STELLAR models).



# MegaDome® 2 Megapixel IP Cameras

## Configurations



## Accessories

<b>MD2-HK</b> 2 Watt Heater		<b>MD-FMA</b> Flush Mount Adapter	
<b>MD-JBA</b> Indoor/Outdoor Junction Box Adapter (For MD-CMT Only)		<b>MD-WMT2</b> Wall Mount (1.5" NPT Standard)	
<b>MD-EBA</b> Electrical Box Adapter Plate		<b>MD-CMT</b> Pendant Mount	
<b>SV-EBA</b> Electrical Box Adapter		<b>AV-PMA</b> Pole Mount Adapter	
<b>SV-JBA</b> Junction Box Adapter (For MD-WMT2 Only)		<b>AV-CRMA</b> Corner Mount Adapter	



## Global Sales and Support

Arecont Vision is the leading manufacturer of high-performance megapixel IP cameras and associated software. All Arecont Vision cameras are made in the USA.

### Americas

**Los Angeles, CA, USA**  
Arecont Vision, LLC. Headquarters  
425 E. Colorado St., 7th Floor  
Glendale, CA 91205, USA

Phone: +1.818.937.0700  
Toll Free: 877.CAMERA.8  
Fax: +1.818.937.0464

#### Sales

Phone: +1.818.937.0700 x 3  
Email: [avsales@arecontvision.com](mailto:avsales@arecontvision.com)

#### Support

Phone: +1.818.937.0700 x 1  
Email: [support@arecontvision.com](mailto:support@arecontvision.com)

#### Latin America

Email: [latam.sales@arecontvision.com](mailto:latam.sales@arecontvision.com)

### EMEA

**Frankfurt, Germany**  
Phone: +49.69.6953.4600  
Email: [europe.sales@arecontvision.com](mailto:europe.sales@arecontvision.com)

**Moscow, Russia**  
CJSC Arecont Vision  
Phone: +7.495.649.0577  
Fax: +7.495.221.5227  
Email: [info@arecontvision.ru](mailto:info@arecontvision.ru)

**Middle East**  
Email: [mena.sales@arecontvision.com](mailto:mena.sales@arecontvision.com)

**Africa**  
Email: [africa.sales@arecontvision.com](mailto:africa.sales@arecontvision.com)

### APAC

**China**  
Phone: +86.180.0179.1799  
Alt. Phone: +1.626.215.5300  
Fax: +1.818.649.3404  
Email: [apac.sales@arecontvision.com](mailto:apac.sales@arecontvision.com)