

MegaDome® 2 Megapixel IP Cameras

1.3–10MP H.264 All-in-One Motorized P-Iris Lens Day/Night IR Indoor/Outdoor Dome IP Cameras with Optional Wide Dynamic Range (WDR)



Wide Field of View



Zoom-In Details

All-in-One Solutions – MegaDome® 2

MegaDome® 2 multi-megapixel cameras provide ample resolution to zoom-in for details in live or recorded video. These indoor/outdoor all-in-one solutions integrate a 1.3-, 1080p, 3-, 5- or 10-megapixel (MP) camera with fast frame rates and an IR corrected motorized wide angle or telephoto vari-focal lens into an IP66 environmental rated and IK-10 impact-resistant dome housing. Remote focus and remote zoom make MegaDome® 2 easy to install and manage. MegaDome® 2 cameras are also available in manual lens models.

Highlighted Features:

- Remote Focus/Zoom Motorized Auto-Iris or P-Iris Lens (AM/PM Models)
- P-Iris Control to Get Best Depth of Field and Image Clarity (PM Models)
- Wide Angle or Telephoto Lens Options
- Optional True WDR up to 100dB at Full Resolution Available on Some 1080p and 3MP Models: See Clearly in Shaded and Bright Light Conditions Simultaneously
- Optional Audio, IR LEDs and Heater (No Heater Required for WDR Models)
- Casino Mode™ Maintains Continuous 30fps Frame Rate Required by Gaming Industry Regulations (AV2255 Models)
- Binning Mode for Strong Low Light Performance on 3MP, 5MP and 10MP Models
- True Day/Night Functionality with Mechanical IR Cut Filter and Optional IR LEDs
- Outdoor Rated IP66 and IK-10 Impact-Resistant Housing
- Total PoE Solution (No External Power Required for Heater and IR LEDs)
- PoE and Auxiliary Power: 12–48V DC/24V AC
- Easily Adjustable 3-Axis Gimbal
- Dual Encoder H.264/MJPEG
- Privacy Mask, Motion Detection, Flexible Cropping, Bit Rate Control, Multi-Streaming and Forensic Zooming
- Fast Frame Rates
- PSIA Conformant



Integrated Motorized Lens with Remote Focus and Zoom (AM/PM Version)



P-Iris Control for Best Depth of Field and Image Clarity (PM Models)



Wide Angle or Telephoto Lens Option



All-in-One Dome Solution



True Day/Night with IR Cut Filter



Impact / Weather Resistant IK-10 and IP66 Rated



Audio Input/Output (-A Models)

10MP
80P

Dual Mode: 1080p/10MP on 10MP Models



Pixel Binning Mode on 3, 5, and 10MP Models



IR LEDs (IR Models)



Wide Dynamic Range Available on Some 1080p and 3MP Models



Heater Option on Non-WDR Models



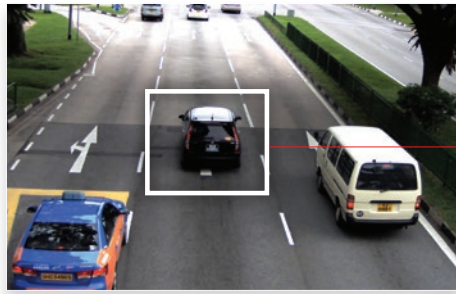
Casino Mode™ Maintains at Least 30fps on AV2255 Models



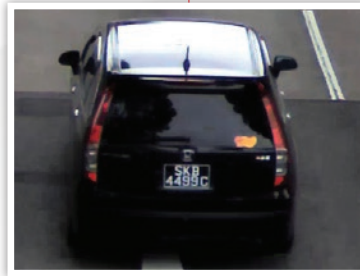
Dual Encoder H.264/MJPEG

See Every Detail with Forensic Zooming

Arecont Vision MegaDome® 2 megapixel cameras deliver outstanding resolution to capture every detail whether viewing live or recorded/archived video. With the ability to digitally Pan-Tilt-Zoom (PTZ) images, you can view the details you need to see at any time, such as license plates, faces and other objects of interest. The superior resolution of MegaDome® 2 megapixel cameras along with their varying fields of view allows them to do the work of multiple conventional cameras and provide critical forensic information—all without the need and associated expense of system operators having to “catch” activities of interest as they occur.



Wide Field of View



Telephoto Field of View

Remote Zoom, Remote Focus and Auto-Iris

The MegaDome® 2 series of all-in-one H.264 cameras combines megapixel resolution with remote focus, remote zoom, Day/Night and auto-iris capabilities. The cameras can be installed without locally adjusting the field of view or focus. All lens operations can be remotely controlled from the head end to refine the field of view and focus of the scene. Short or full range focus scan functions analyze the local or full scene to determine the best focus for the chosen field of view.

MegaDynamic® Wide Dynamic Range (WDR)

Users can achieve clear images in extreme lighting conditions with MegaDome® 2 WDR cameras in resolutions of 1080p and 3MP. Wide Dynamic Range up to 100dB at full resolution balances light and dark areas in the same scene, such as in the lobby of an office building or the loading dock at a distribution facility. Optional IR illuminators provide coverage in total darkness for a 24-hour solution.



Megapixel image without WDR



Megapixel image with WDR

Multiple Options

MegaDome® 2 is available with optional features to meet the specific needs of your application. Built-in infrared (IR) LEDs make it possible to obtain clear images in total darkness. The audio option provides connectors for two-way communication. An optional heater keeps your camera up and running when temperatures descend below normal operational specifications.

Telephoto P-Iris Lens Option

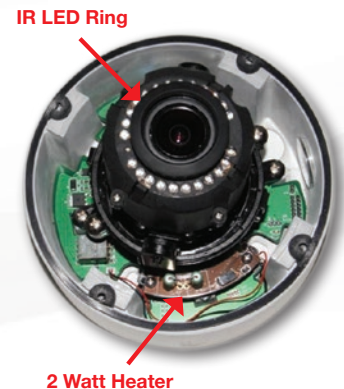
MegaDome® 2 cameras are available with motorized telephoto lenses, further boosting their flexibility as all-in-one solutions. Telephoto lenses offer a broad optical range for every sensor resolution in the MegaDome® 2 family.

Optical Range Per Sensor	
1080p	8–22mm
1080p WDR	8–22mm
3MP	8–22mm
3MP WDR	8–22mm
5MP	9–22mm
10MP WDR	12–22mm

These telephoto lenses feature P-iris technology to achieve the best exposure possible for the lighting conditions and offer remote focus/ remote zoom for easy installation and maintenance.

Total PoE Solution

No external power is needed for both the heater and IR LED ring.



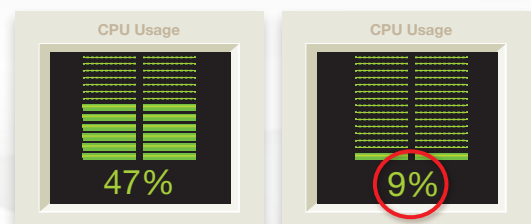
IR LED Key Specs

- 850nm LEDs (x24)
- 20m IR Distance (Max)
- 40° IR Angle
- MTBF: 82,442 Hours

Compliant H.264 Compression

MegaDome® 2's compliant implementation of H.264 allows full frame rates and full resolution without sacrificing image quality. With bit rate control, the CPU load is decreased at both the client (decompression) side and the server/storage side, allowing lower bandwidth and storage relative to MJPEG. Real Time Streaming Protocol (RTSP) allows for compatibility with media players such as Apple QuickTime®, VLC and others.

H.264 Decompression (example)



2MP with live video in MJPEG

2MP with live video in H.264



Motorized Lens with IR Illuminator

Motorized Lens

MegaDome® 2 Megapixel IP Cameras

Enhanced Low Light Performance

As part of their superior Day/Night operation, MegaDome® 2 cameras include low light-enhancing technology such as binning and adaptive noise-cancellation. This functionality along with integrated IR illumination provides a winning combination in complete darkness.



Day Mode



Night Mode

User-Friendly Web Interface

For easy installation, remote focus and remote zoom can be done through the camera webpage. Just click “short range focus” or “full range focus” to get a clear image through the IK-10 rated dome bubble. The added auto-iris functionality provides better depth of field in varying lighting conditions.

Additional Benefits Include:

- Fine tuning for a better image after installation
- Quicker installation for lower total cost of ownership (TCO)
- Ability to choose wide or telephoto depending on application requirements
- Auto-iris is designed to provide the maximum depth of field in any lighting condition to ensure the best possible image quality



Product Comparison



Model	Resolution		Minimum Illumination	Lens	Max Frame Rate @ Full Resolution	Day/Night	WDR	Binning Mode	Remote Focus/Zoom	IR Option	Heater Option	Audio Option	Auto Iris Lens	P-Iris Lens	Manual Lens	Telephoto
AV1255DN	1.3MP	1280 x 1024	Color: 0.1 Lux B/W: 0 Lux, IR Sensitive	3.3–10.5mm, 1/2.5", F1.6, H-FOV = 62°–24°	42fps	•				•	•				•	
AV1255AM	1.3MP	1280 x 1024	Color: 0.1 Lux B/W: 0 Lux, IR Sensitive	3–9mm, 1/2.7", F1.2, RZ, RF, Auto-Iris, H-FOV = 77°–25°	42fps	•			•	•	•		•			
AV2255DN	1080p	1920 x 1080	Color: 0.1 Lux B/W: 0 Lux, IR Sensitive	3.3–10.5mm, 1/2.5", F1.6, H-FOV = 93°–36°	31fps	•				•	•				•	
AV2255AM	1080p	1920 x 1080	Color: 0.1 Lux B/W: 0 Lux, IR Sensitive	3–9mm, 1/2.7", F1.2, RZ, RF, Auto-Iris, H-FOV = 115°–37°	31fps	•			•	•	•	•	•			
AV2255PMTIR	1080p	1920 x 1080	Color: 0.1 Lux B/W: 0 Lux, IR Sensitive	8–22mm, 1/2.7", F1.6, RZ, RF, P-Iris, Telephoto, H-FOV = 42°–16°	31fps	•			•	•	•	•		•		•
AV2256DN	1080p	1920 x 1080	Color: 0.3 Lux B/W: 0 Lux, IR Sensitive	3.3–10.5mm, 1/2.5", F1.6, H-FOV = 68°–26°	30fps	•	•			•					•	
AV2256PM	1080p	1920 x 1080	Color: 0.3 Lux B/W: 0 Lux, IR Sensitive	3–9mm, 1/2.7", F1.2, RZ, RF, P-Iris, H-FOV = 82°–27°	30fps	•	•		•	•				•		
AV2256PMTIR	1080p	1920 x 1080	Color: 0.3 Lux B/W: 0 Lux, IR Sensitive	8–22mm, 1/2.7", F1.6, RZ, RF, P-Iris, Telephoto, H-FOV = 30°–12°	30fps	•	•		•	•				•		•
AV3255DN	3MP	2048 x 1536	Color (Non-Binning): 0.3 Lux Color (Binning): 0.15 Lux B/W: 0 Lux, IR Sensitive	3.3–10.5mm, 1/2.5", F1.6, H-FOV = 73°–28°	21fps	•		•		•	•				•	
AV3255AM	3MP	2048 x 1536	Color (Non-Binning): 0.3 Lux Color (Binning): 0.15 Lux B/W: 0 Lux, IR Sensitive	3–6–9mm, 1/2.5", F1.8, RZ, RF, Auto-Iris, H-FOV = 76°–28°	21fps	•		•	•	•	•		•			
AV3255PMTIR	3MP	2048 x 1536	Color (Non-Binning): 0.3 Lux Color (Binning): 0.15 Lux B/W: 0 Lux, IR Sensitive	8–22mm, 1/2.7", F1.6, RZ, RF, P-Iris, Telephoto, H-FOV = 29°–12°	21fps	•		•	•	•				•		•
AV3256DN	3MP	2048 x 1536	Color (Non-Binning): 0.3 Lux Color (Binning): 0.15 Lux B/W: 0 Lux, IR Sensitive	3.3–10.5mm, 1/2.5", F1.6, H-FOV = 72°–28°	21fps	•	•	•		•					•	
AV3256PM	3MP	2048 x 1536	Color (Non-Binning): 0.3 Lux Color (Binning): 0.15 Lux B/W: 0 Lux, IR Sensitive	3–9mm, 1/2.7", F1.2, RZ, RF, P-Iris, H-FOV = 87°–29°	21fps	•	•	•	•	•		•		•		
AV3256PMTIR	3MP	2048 x 1536	Color (Non-Binning): 0.3 Lux Color (Binning): 0.15 Lux B/W: 0 Lux, IR Sensitive	8–22mm, 1/2.7", F1.6, RZ, RF, P-Iris, Telephoto, H-FOV = 32°–12°	21fps	•	•	•	•	•		•		•		•
AV5255DN	5MP	2592 x 1944	Color (Non-Binning): 0.3 Lux Color (Binning): 0.15 Lux B/W: 0 Lux, IR Sensitive	3.3–10.5mm, 1/2.5", F1.6, H-FOV = 92°–36°	14fps	•		•		•	•				•	
AV5255AM	5MP	2592 x 1944	Color (Non-Binning): 0.3 Lux Color (Binning): 0.15 Lux B/W: 0 Lux, IR Sensitive	3–6–9mm, 1/2.5", F1.8, RZ, RF, Auto-Iris, H-FOV = 96°–36°	14fps	•		•	•	•	•	•	•			
AV5255PMTIR	5MP	2592 x 1944	Color (Non-Binning): 0.3 Lux Color (Binning): 0.15 Lux B/W: 0 Lux, IR Sensitive	9–22mm, 1/2.5", F2.0, RZ, RF, P-Iris, Telephoto, H-FOV = 38°–16°	14fps	•		•	•	•	•	•		•		•
AV10255AM	10MP	3648 x 2752	Color (Non-Binning): 0.42 Lux Color (Binning): 0.21 Lux B/W: 0 Lux, IR Sensitive	4.7–9mm, 1/2.3", F1.8, RZ, RF, Auto-Iris, H-FOV = 73.8°–37°	7fps	•		•	•	•			•			
AV10255PMTIR	10MP	3648 x 2752	Color (Non-Binning): 0.42 Lux Color (Binning): 0.21 Lux B/W: 0 Lux, IR Sensitive	12–22mm, 1/2.3", F2.2, RZ, RF, P-Iris, Telephoto, H-FOV = 30°–17°	7fps	•		•	•	•				•		•

Lens Options

AM	Remote Focus/Zoom, Auto-Iris, Day/Night
PM	Wide Angle Lens w/ Remote Focus/Zoom, P-Iris, Day/Night
PMT	Telephoto Lens w/ Remote Focus/Zoom, P-Iris, Day/Night
DN	Manual Lens, Day/Night

Additional Options

IR	IR LEDs
-H	Heater (Non-WDR Models Only)
-A	Audio

(Example: AV2255AMIR-AH)













MegaDome® 2 Megapixel IP Cameras

Configurations



Accessories

MD2-HK 2 Watt Heater		MD-FMA Flush Mount Adapter	
MD-JBA Indoor/Outdoor Junction Box Adapter (For MD-CMT Only)		MD-WMT2 Wall Mount (1.5" NPT Standard)	
MD-EBA Electrical Box Adapter Plate		MD-CMT Pendant Mount	
MV-EBA Electrical Box Adapter		MD-PMA Pole Mount Adapter	
SV-JBA Junction Box Adapter (For MD-WMT2 Only)		MD-CRMA Corner Mount Adapter	



Global Sales and Support

Arecont Vision is the leading manufacturer of high-performance megapixel IP cameras and associated software. All Arecont Vision cameras are made in the USA.

North America

Los Angeles, USA
Arecont Vision, LLC. Headquarters
425 E. Colorado St., 7th Floor
Glendale, CA 91205, USA

Phone: +1.818.937.0700
Toll Free: 877.CAMERA.8
Fax: +1.818.937.0464

Sales
Phone: +1.818.937.0700 x 3
Email: avsales@arecontvision.com

Support
Phone: +1.818.937.0700 x 1
Email: support@arecontvision.com

South America

Latin America
Email: latam.sales@arecontvision.com

EMEA

Frankfurt, Germany
Arecont Vision Europe GmbH
Lyoner Straße 38, 5th Floor
60528 Frankfurt, Germany

Phone: +49.69.6953.4600
Email: europe.sales@arecontvision.com

Moscow, Russia
CJSC Arecont Vision
121351, Russian Federation, Moscow, 58/1, Molodogvardeiskaya str.

Phone: +7.495.649.0577
Fax: +7.495.221.5227
Email: info@arecontvision.ru

Middle East
Email: mena.sales@arecontvision.com

Africa
Email: africa.sales@arecontvision.com

APAC

Shanghai, China
Resident Representative Office of Arecont Vision, LLC
in Shanghai
Taolin Road No. 18, Building A
World Plaza, Room #1603
Pudong New District, Shanghai, 200135
P.R.China

Phone: +86.21.6176.2596
Alt. Phone: +86.21.6176.2597
Fax: +86.21.6085.2520
Email: apac.sales@arecontvision.com