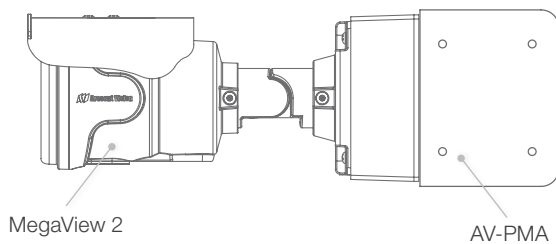


MegaView® Series Accessories

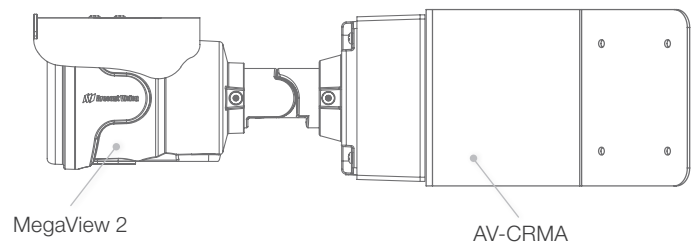
Accessories for Indoor/Outdoor Pole and Corner Mounting Solutions



**Wall Mount Configuration
with Pole Mount Adapter**



**Wall Mount Configuration
with Corner Mount Adapter**



Compatible Cameras



MegaView® 2

AV-PMA

Pole Mount Adapter

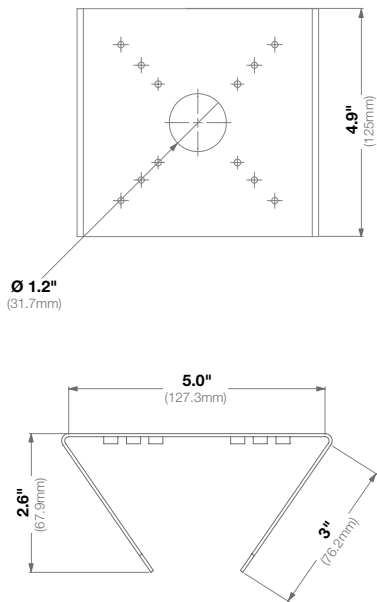


Features:

- Easy Installation and Superior Design
- Heavy Duty Enclosure Protection for Applications in Harsh Environments
- Die-Cast Aluminum is Resistant to Impact and Salt Damage

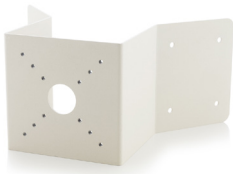
Compatibility	Compatible with 2"-7" pole diameter
	Works with AV-WMJB, AV-SWMJB, MDD-WMT, MCD-WMT, and AV-JBA

Mechanical	Casing	Die-cast aluminum
		IP66 weather proof standard
		IK-10 impact-resistant
	Color	Ivory (Pantone® Cool Gray 1C)
	Dimensions	5.01" W (127.32mm) x 4.92" H (125mm)
	Weight	w/o Camera 0.32lbs (0.15kg)



AV-CRMA

Corner Mount Adapter

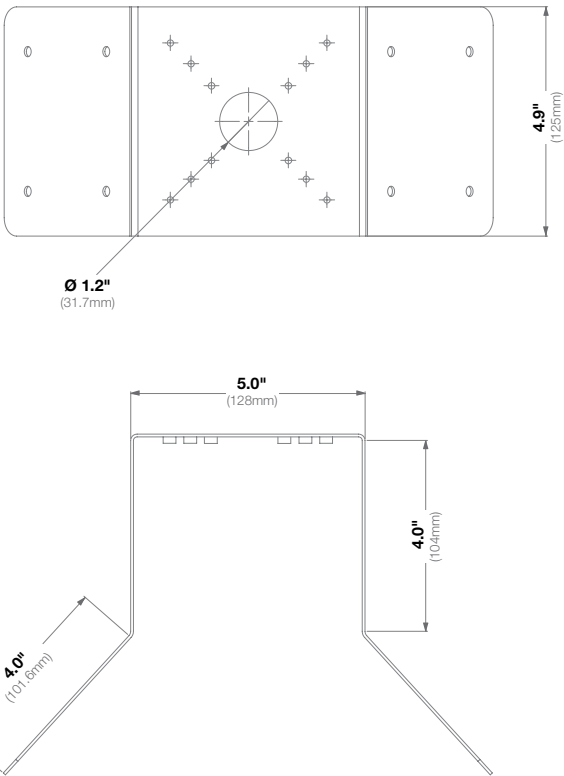


Features:

- Easy Installation and Superior Design
- Heavy Duty Enclosure Protection for Applications in Harsh Environments
- Die-Cast Aluminum is Resistant to Impact and Salt Damage

Compatibility	Works with AV-WMJB, AV-SWMJB, MDD-WMT, MCD-WMT, and AV-JBA
---------------	--

Mechanical	Casing	Die-cast aluminum
		IP66 weather proof standard
		IK-10 impact-resistant
	Color	Ivory (Pantone® Cool Gray 1C)
	Dimensions	13.04" W (331.25mm) x 4.92" H (125mm)
	Weight	w/o Camera 0.59lbs (0.27kg)



AV-EBAS

Square Electrical Box Adapter Plate

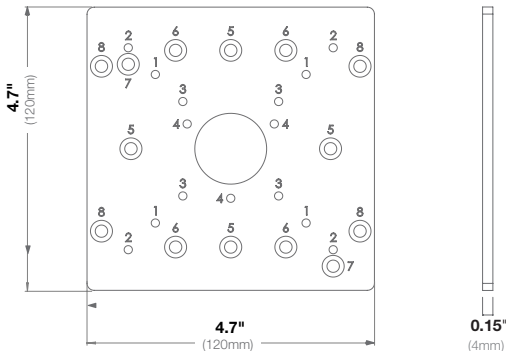


Features:

- Easy Installation and Superior Design
- Heavy Duty Enclosure Protection for Applications in Harsh Environments
- Die-Cast Aluminum is Resistant to Impact and Salt Damage

Compatibility*	Compatible with 3/4" NPT standard
	Works with MegaView® Series, MicroBullet®, SurroundVideo®, SurroundVideo G5, AV-JBA, AV-WMJB, AV-SWMJB, MCD-WMT, MDD-WMT, HSG2-WMT, and AV-PMJB

Mechanical	Casing	Die-cast aluminum
		IP66 weather proof standard
		IK-10 impact-resistant
	Color	Ivory (Pantone Cool Gray 1C)
	Dimensions	4.7" L (120mm) x 0.15" W (4mm) x 4.7" H (120mm)
	Weight	w/o Camera 0.33lbs (0.13kg)



Hole No.	Model Compatibility
1	AV-JBA, AV-WMJB, AV-PMJB, MegaView 2 (standard), SurroundVideo, SurroundVideo G5
2	HSG2-WMT, AV-WMJB bracket, AV-PMJB bracket, MegaView 2 bracket
3	AV-SWMJB, MCD-WMT, MDD-WMT
4	MicroBullet
5	Single gang box
6	Double gang box
7	4S box (4" square, 4" octagonal)
8	4-11/16" square box

Quick Installation:

1. Pass cables through the center hole of the adapter plate.
2. Attach the adapter plate to the electrical box (sold separately) using the appropriate hardware and mounting holes.
3. Attach the compatible part noted above.

* The mounting plate on all MegaDome® Series cameras, SurroundVideo G5 Mini, SurroundVideo Omni G3, MicroDome® Duo, and the D4SO-3 housing negate the need for a separate electrical box adapter plate and therefore this accessory is not applicable.

** Replacement part for these models

AV-JBA

Square Standard Junction Box

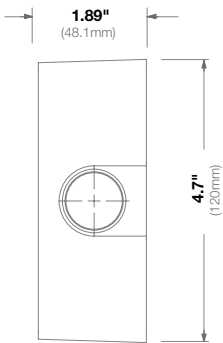
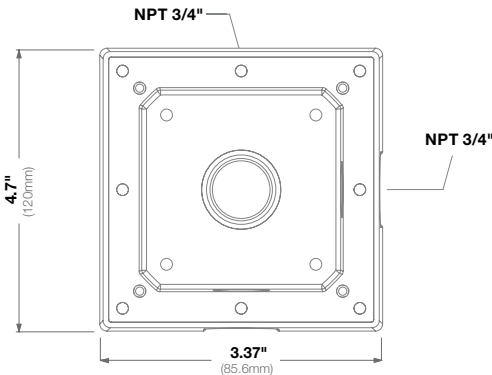


Features:

- Easy Installation and Superior Design
- Heavy Duty Enclosure Protection for Applications in Harsh Environments
- Die-Cast Aluminum is Resistant to Impact and Salt Damage

Compatibility	Compatible with 3/4" NPT standard
	Works with AV-PMJB**, AV-WMJB**, HSG2-WMT, MCD-JBAS, MCB-JBAS, and MegaView 2**

Mechanical	Casing	Die-cast aluminum
		IP66 weather proof standard
		IK-10 impact-resistant
	Color	Ivory (Pantone® Cool Gray 1C)
	Dimensions	4.7" L (120mm) x 4.7" W (120mm) x 1.89" H (48.1mm)
	Weight	w/o Camera 1.3lbs (0.63kg)



See Next Page for Ordering Information



Compatible Accessories by Camera Model

MegaView 2	AV-CRMA, AV-PMA, AV-EBAS, AV-JBA
-------------------	----------------------------------

Accessory Model Numbers

AV-CRMA	Corner Mount Adapter
AV-PMA	Pole Mount Adapter
AV-EBAS	Square Electrical Box Adapter Plate
AV-JBA¹	Square Standard Junction Box

¹ Replacement part only