

Arecont Vision Update

July Customer Update



Leading the Way in Megapixel Video



Video Surveillance for Manufacturing

- Manufacturers seek to protect their employees, visitors, stock, equipment, and property
 - *From the front office through the manufacturing process to the shipping dock*
 - Workplace violence prevention/response, theft, and business espionage are typical high priorities
 - Monitoring all aspects of the business with complete situational awareness becomes possible with Arecont Vision single, dual, and multi-sensor megapixel cameras
-
- Deterrence
 - Loss Reduction
 - Liability Claim Reduction
 - Security and Life Safety
 - Documentation and Forensics
 - Analyze Behavior Patterns
 - Process Monitoring and Inspection

Vertical sample case studies & news stories





Manufacturing – Plant Floor Surveillance



Leading the Way in Megapixel Video™



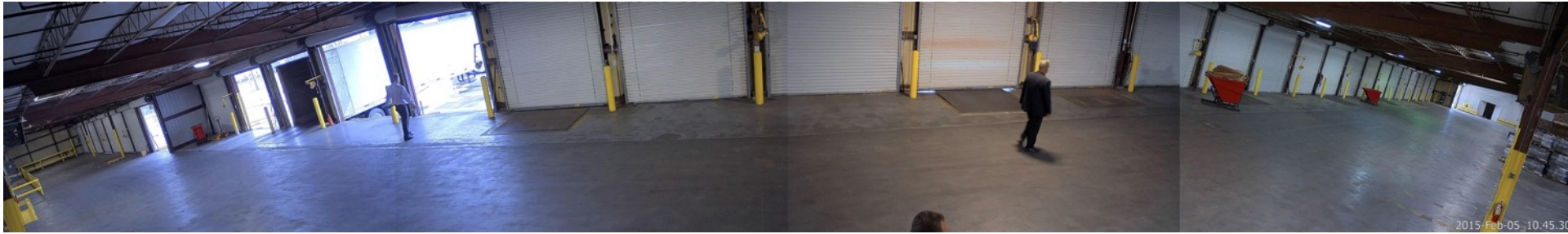




Manufacturing – Shipping & Loading Dock Surveillance



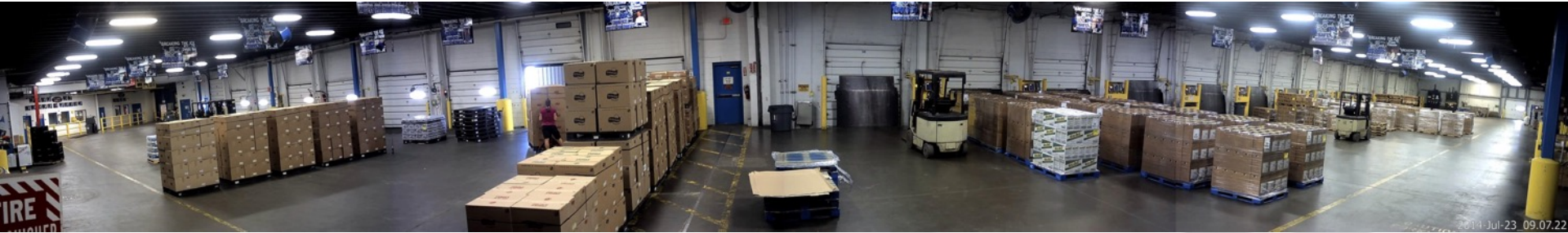
Leading the Way in Megapixel Video™



Manufacturing – Shipping & Loading Dock Surveillance



Leading the Way in Megapixel Video™















- Perimeter Security
- Main Gate
- Entry/Exits
- Manufacturing Area
- Loading Docks
- Offices
- Warehouse
- Receiving
- Customer Service Counters
- Storage Areas
- Open Areas
- Parking Lots

- Deter Internal and External Theft
- Capture License Plate and Vehicle Description
- Overall Security with Sufficient Detail for Customer and Staff ID
- Prevention of False Claims
- Improve Staff Productivity
- Resolve Staff and Customer Disputes
- Increased Coverage of Potential Areas of Concern
- Ability to Cover More with Less
- Increased for Live Viewing & Forensics
- Reduced Time to Action in Post Event Investigations
- Remote Access

- Pharmacann (Video News Story)
 - <http://tinyurl.com/y7sbwgyw>
- BASF (Case Study)
 - <http://tinyurl.com/y8wfi9cx>
- Suez Cement (Case Study)
 - <http://tinyurl.com/ydbb7fv7>
- Slovenia Printer (Case Study)
 - <http://tinyurl.com/yd63qoda>
- POSCO Steel (Case Study)
 - <http://tinyurl.com/ybhj8sft>
- Dragon Steel (Case Study)
 - <http://tinyurl.com/yas62uyz>
- Koehler (Video Case Study)
 - <http://tinyurl.com/ycr5zudm>
- SpaceX (News Story)
 - <http://tinyurl.com/ya67nmrw>
- Dragon Steel (Case Study)
 - <http://tinyurl.com/yas62uyz>
- General Trading Company (Video Case Study)
 - <http://tinyurl.com/yb6tfpfq>
- Movses Bakery & Pastry (Video News Story)
 - <http://tinyurl.com/y8cjf8ej>
- Rock Wall Wine Company (Testimonial)
 - <http://tinyurl.com/ybw9vqb7>

“Arecont Vision megapixel cameras provide the extremely clear images that are needed for security monitoring of the facility perimeter.

Even BASF corporate was excited about the difference in quality between the megapixel and analog images.”

- Raylene Xie, Tyco Fire and Security China

“A major benefit of Arecont Vision cameras is their reliability.

The use of megapixel cameras versus conventional imaging devices provides remarkable opportunities to realize a return on investment (ROI). The combination of the overall increased resolution and forensic capability using megapixel cameras and the lower system costs was irresistible for Posco-Malaysia.”

- Terrence Ham, Sensorlink

Product Development Update

4K (8.3 Megapixel @ 30 Frames Per Second) Box Camera H.264 Remote Focus/Zoom, P-Iris Lens, True Day/Night, IP Camera

Highlighted Features Include:

- 4K Ultra High Resolution Image Quality
- 8.3MP/30FPS H.264 True Day/Night Indoor Dome IP Cameras
- NightView™ Technology for Enhanced Low Light Performance
- 4K/1080p Dual Mode
- Wide Dynamic Range
- SNAPstream™ (Smart Noise Adaption and Processing) for reduced bandwidth without impacting image quality
- Multiple Lens Option with Remote Zoom/Focus and P-iris
- Outdoor Housing Options

4K



SNAPstream™



NightView™



4K Resolution



Customizable Motorized
and Manual Lens Options
and Housing Options



P-Iris Control for Best Depth
of Field and Image Clarity
(PM Models)



SDHC Card Slot
(-S Models)



True Day/Night
with IR Cut Filter



CorridorView™
with 90° Image Flip



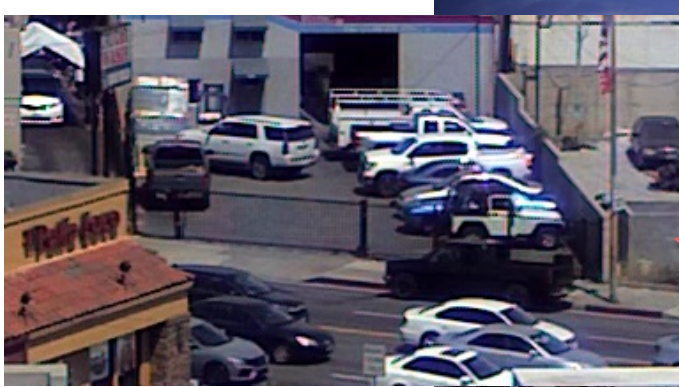
GEN5
Megapixel IP Camera



Arecont 4.4-10mm, 1/1.7", f1.2 CS-mount,
IR corrected, P-Iris, Motorized Zoom and
Focus (for use with 5MP and above)

UHD4.4-10MPI





UHD4.4-10MPI



**Arecont 12-50mm, 1/1.7", f1.8
CS-mount, IR corrected, P-
Iris, Motorized Zoom and
Focus (for use with 5MP and
above)**

UHD12-50MPI

Arecont 30-120mm, 1/1.7", f2.2 C-mount, IR corrected, P-Iris, Motorized Zoom and Focus (for use with 5MP and above). Must use HSG3 housing.

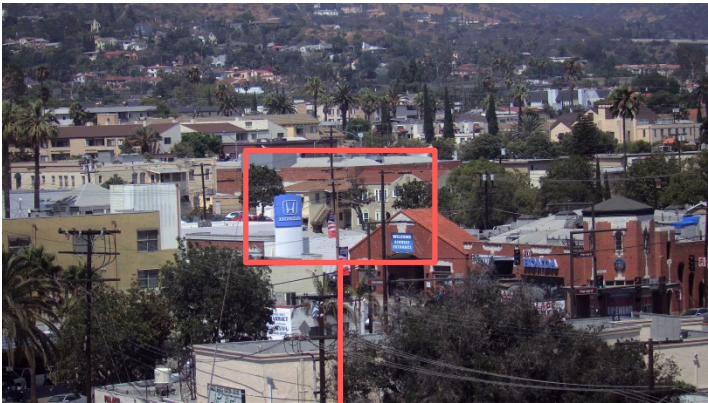


UHD30-120MPI

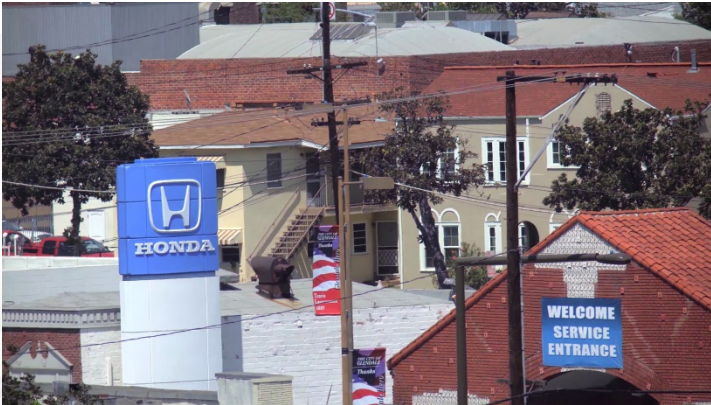




UHD30-120MPI



Wide



Telephoto

12 or 20 Megapixel H.264 All-in-One 3rd Generation Omni-Directional Multi-Sensor Day/Night Indoor/Outdoor Dome IP Cameras with Remote Setup

Highlighted Features Include:

- Multi-Sensor, Multi-Megapixel (12 and 20 MP) Omni-Direction Low Profile Dome Camera with Advanced H.264 Compression, Optional WDR, Increased Frame Rates, and Remote Focus
- No-Touch **Remote Setup** for all 4 Individual Camera Gimbals for Setup or Field of View Changes
 - 180°, 270°, 360° view presets plus up to 2 custom user-defined presets
 - User-Specific View / Angles / Focus
 - Varifocal motorized lens
- True Day/Night and Enhanced Wide Dynamic Range (WDR) Models
- SNAPstream™ Advanced Compression Algorithm Reduces Bandwidth Without Impacting Image Quality



Remote Setup



SNAPstream™
Technology



Omni-Directional Track
with 4 Customizable
Sensors



Presets
180°/270°/360°



Custom Presets



Motorized
Pan & Tilt Capable



Wide Dynamic Range
on Select 12MP Models



True Day/Night
with IR Cut Filter



Pixel Binning
Mode



Impact / Weather
Resistant IK-10 and
IP66 Rated



Dual Encoder
H.264/MJPEG

Video Surveillance for Manufacturing Facilities

- Minimal amount of cameras deployed
- Minimal cable drops and network ports deployed on the floor
- Reduction of VMS license and IP addresses utilized
- Fast installs to minimize production disruptions
- Flexibility to mount the cameras in ideal positions to be able to view obstacles on the floor including production equipment, cranes and fork lifts
- The ability to adapt and change view targets depending on future changes to the floor
- Overview of production floor as well as employee safety

- 3 Classes of **Surround** Video technology with various resolutions and technology to address any price point and function

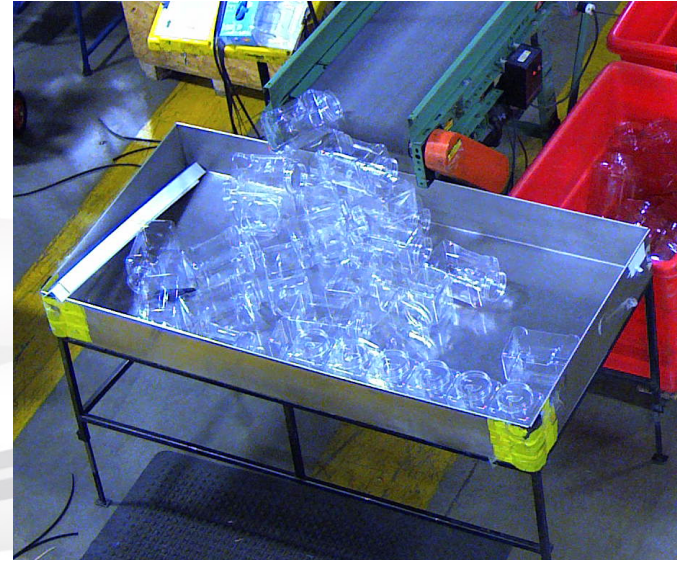
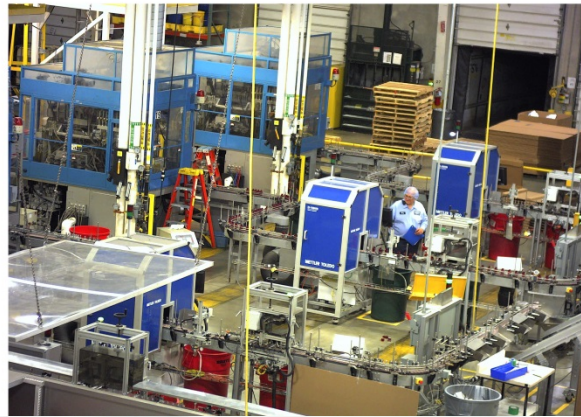
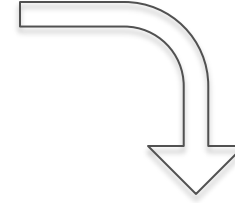
Good - manual focus and positioning, ability to change lenses for optimal view and pixel density

Better - remote focus, 3 axis gimbal, ability to change the lenses for optimal view and pixel density

Best - remote focus, motorized varifocal lenses, remote positioning, fast install with minimal time on lift

- Multisensor 4 in 1 IP camera's with 12MP, 12MP w/WDR, and 20MP resolutions
- 1 cable drop and 1 port on the switch with standard PoE power
- 1 IP address and 1 VMS license (on most VMS platforms)
- Multiple mounting solutions and options

The solutions and deployment



The solutions and deployment



4 MM Lens



8 MM Lens

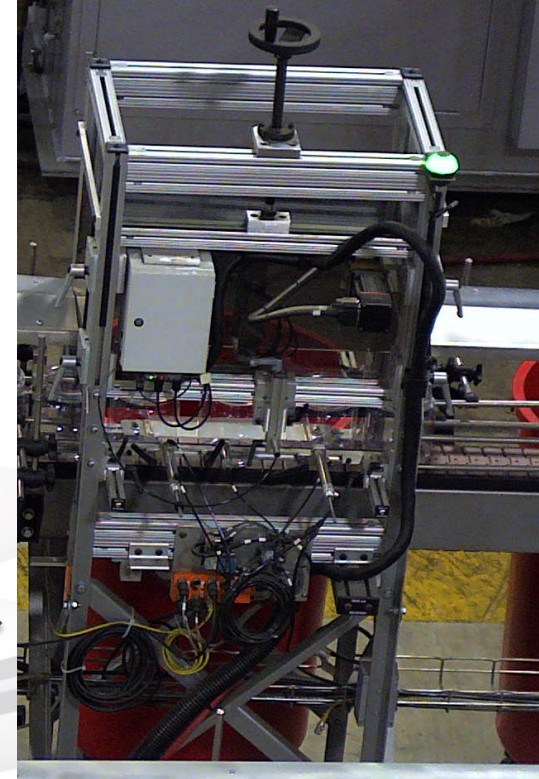
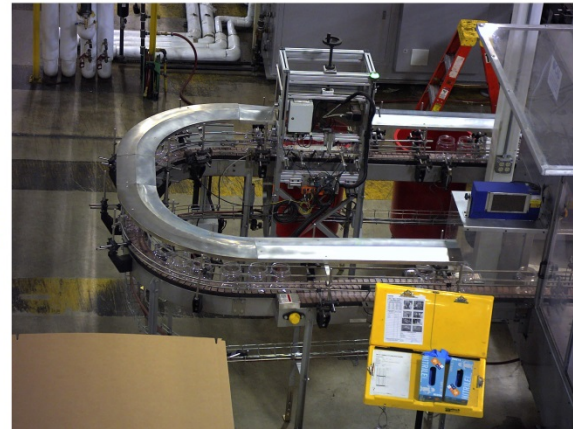


2.8 MM Lens



16 MM Lens

The solutions and deployment



The solutions and deployment



The solutions and deployment



The solutions and deployment



8mm Lens



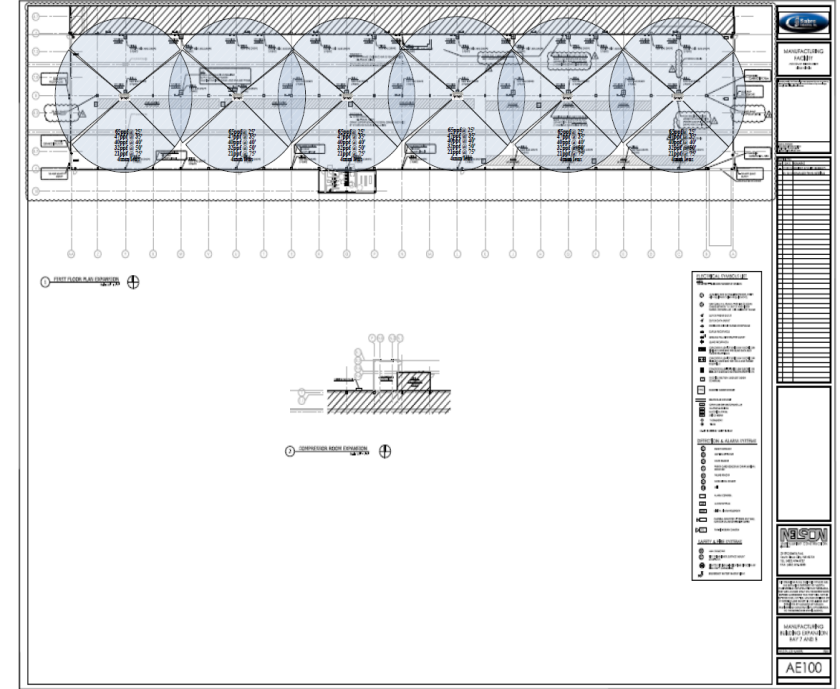
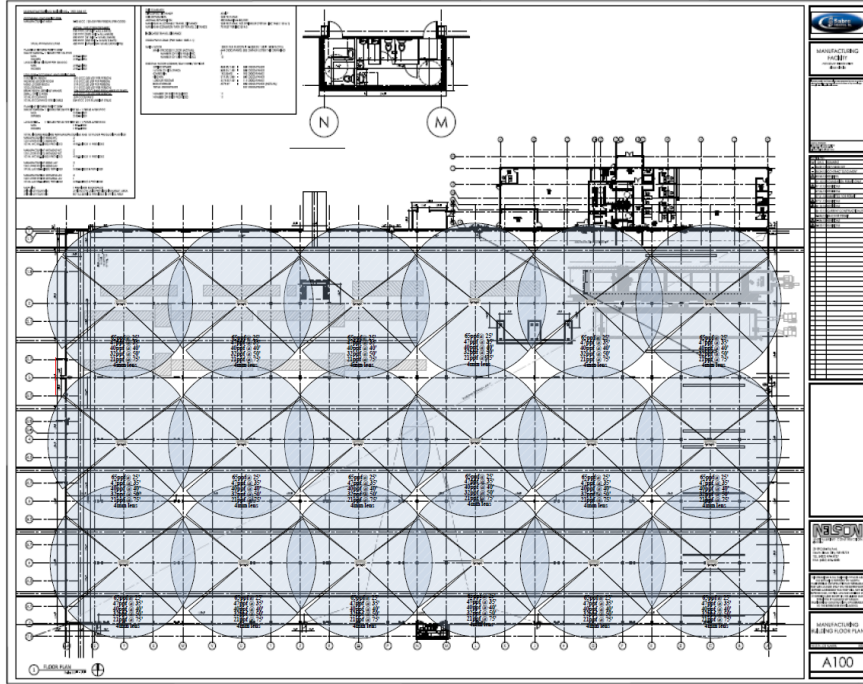
16mm Lens



2.8mm Lens



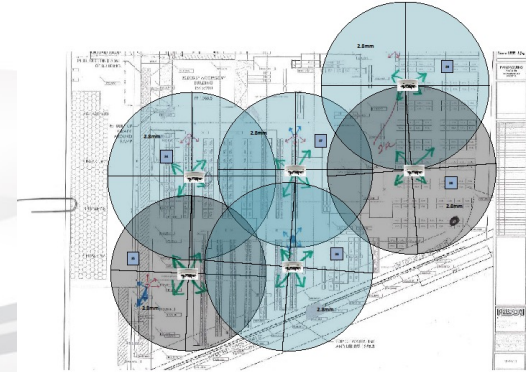
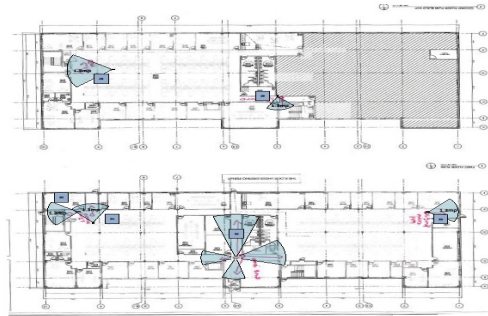
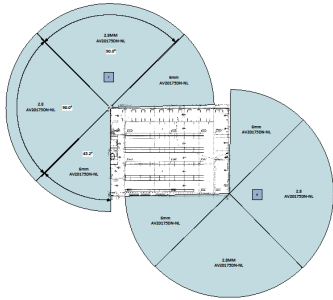
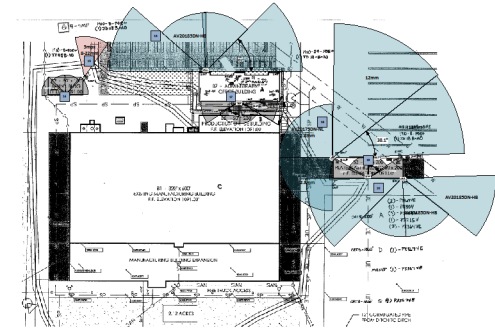
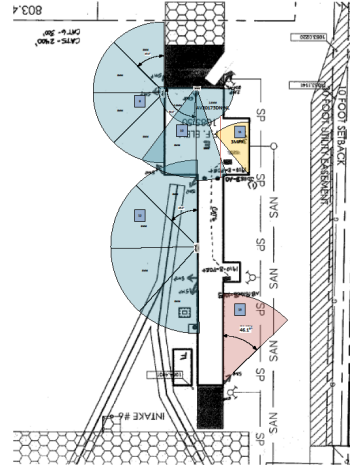
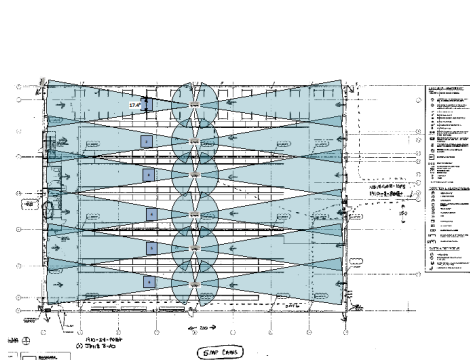
4mm Lens

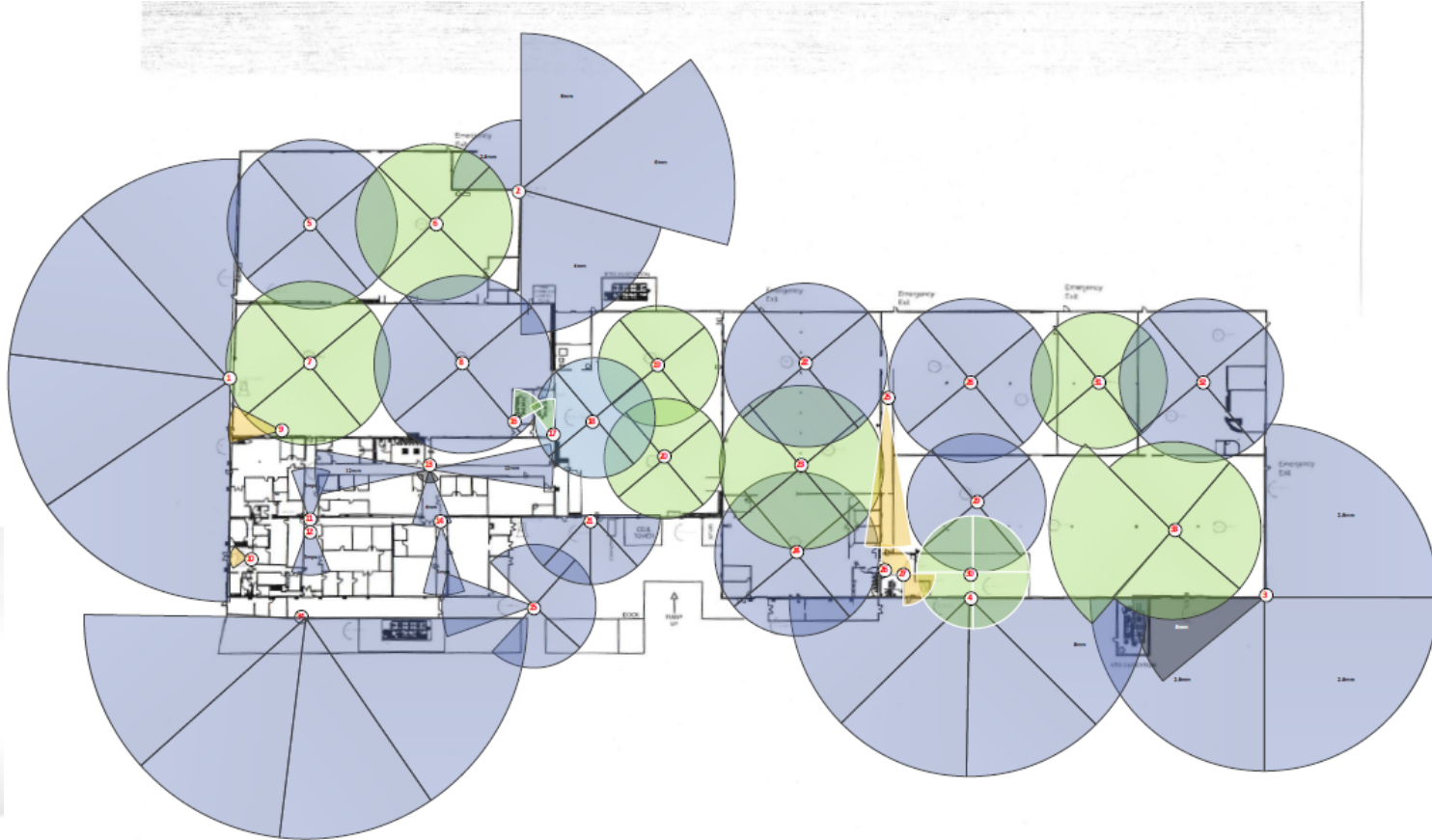


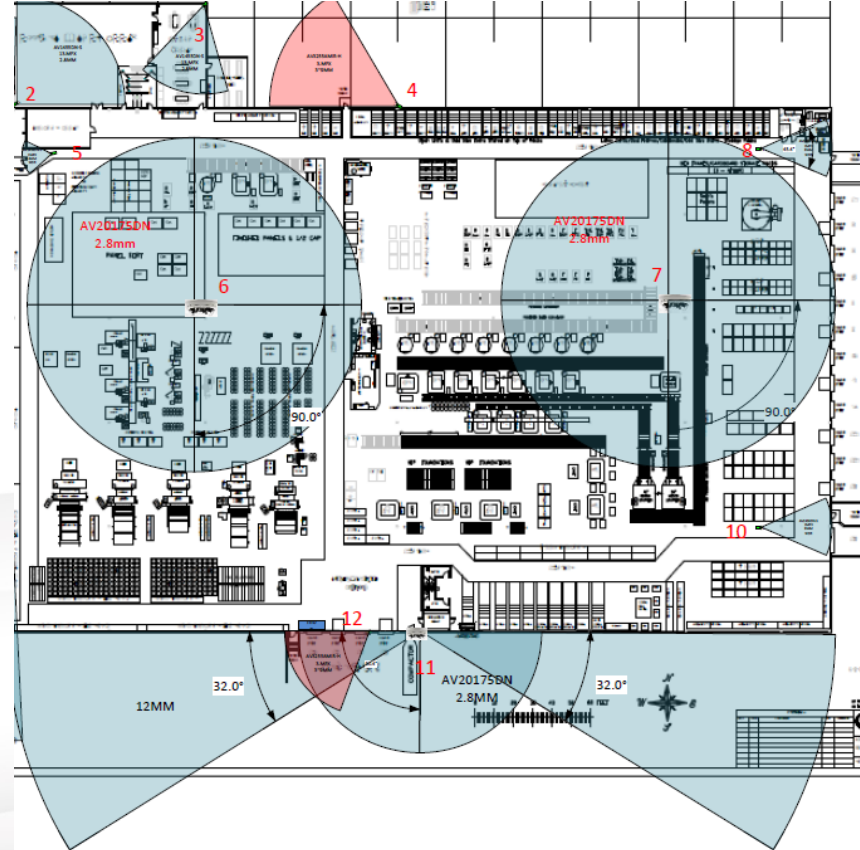
Designs by The Arecont Vision FAE Team



Leading the Way in Megapixel Video™





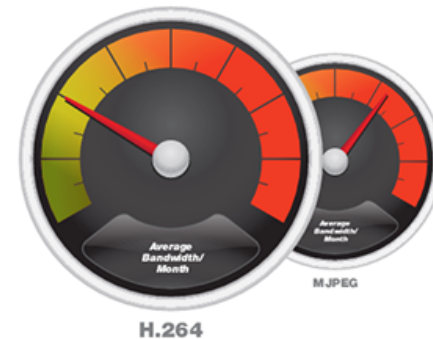


- **Surround**Video Omni Series is the perfect solution to meet all of the needs and concerns on a manufacturing floor as well as in a distribution hub
 - 1 VMS License (On most VMS platforms)
 - 1 Cable drop
 - 1 Standard PoE switch port
 - 1 IP address
 - Various lensing options for optimal coverage
 - Multiple mounting options for the best placement
 - Fast install time
 - 4 in 1 multisensor, multi megapixel IP cameras

Tech Tips & Tricks for Successful Installation

- Certify all network wire runs and terminations
- Pre-configure and label cameras and VMS
- Test your solution with all components
- Train the installers on cameras and VMS
- Check that you have all components and accessories needed
- Make sure the network and servers provided deliver adequate throughput to support the aggregated load of all cameras connected

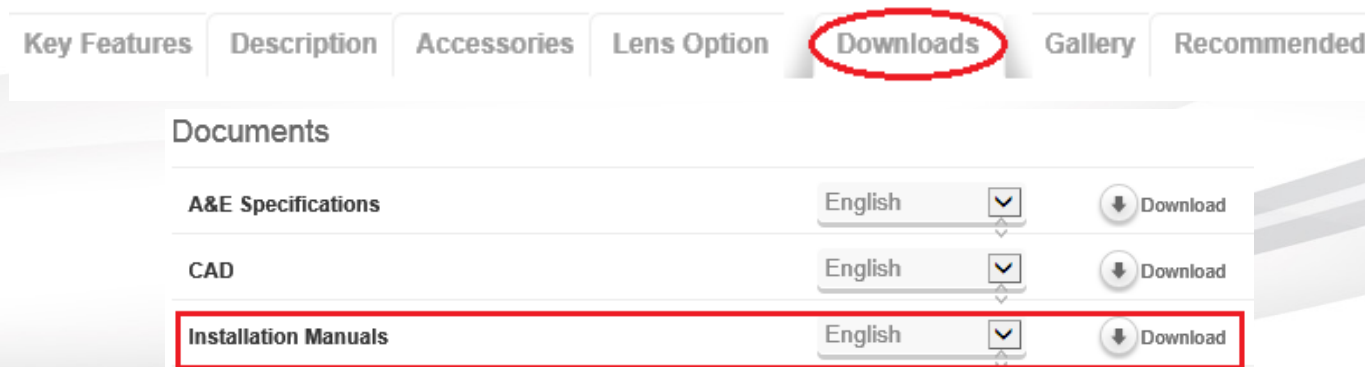
- Compared to Low Resolution Video, Megapixel Bit Rates are Proportionally Larger
- H.264 Offers Improved Bit Rate Over JPEG but Bit Rate is Variable and Subject to Spiking with High Scene Activity
- Sufficient Bandwidth Overhead in the Project Infrastructure is Critical for Success



Most Efficient
Compression (H.264)
10x Average Bandwidth and
Storage Reduction over MJPEG

- These manuals are available for each product on the Arecont Vision web site
- The installation manuals include model configurations, assembly and focus instructions, available accessories and installation instructions, mounting templates, specifications, and warranty information
- This is a great opportunity to make sure you have ordered all the required accessories for the product and understand any special installation or focusing instructions.

- On the Arecont Vision web page
 - Go to “products” choose the product family you are installing then select the model you are installing from the list
 - On the individual product page select “downloads” tab and then go to the “documents” section to find and download the installations manual for the product



- Challenges can occur onsite when it comes time to actually install the product
- Most common are:
 - Missing or improperly combined accessories
 - Install of outdoor cameras results in water damage
 - Placement of cameras too high or in blind spot positions
 - Challenges installing cameras on the local network
 - Poor focusing of cameras

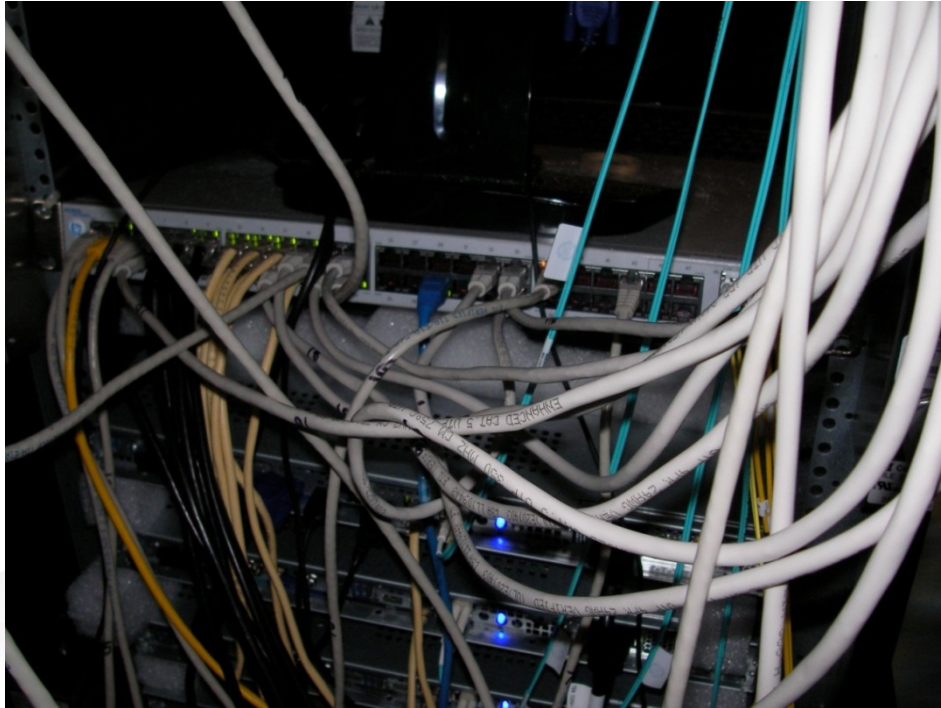
- Know what the camera should be looking at
- Focus the camera
- Check the camera firmware – confirm version with your VMS
 - *Upgrade Firmware to add new features*
 - *Upgrade Firmware to implement the latest improvements*
 - *Upgrade/ or Downgrade Firmware for compatibility (Some VMS only support specific firmware versions)*
 - *Don't upgrade firmware just because it is the latest (if it ain't broke don't fix it)*
- Know your VMS and what settings on the camera it can control
- Consider night time site lighting conditions

- With Arecont Vision Compact, MicroDome, Duo, and SurroundVideo Omni cameras the lens can be selected by the end user
- Not all lenses even ones marked megapixel are equal so its important to use the lenses recommended for use with the product
- Arecont Vision's product managers publish lists or recommended lenses that include view angles of different resolution models in that product family
- These lists can be found in the product downloads section on our web page for specific models
- For our Compact series cameras many of the recommended lenses are C mount, the cameras are CS mount – this means you will probably need the C mount adapter ring that ships in the box with your camera

Tip: *(don't throw it away with the box)*

- Any outdoor cabling should be enclosed in conduit
- Avoid inline couplers and unnecessary terminations with copper wiring runs
- Never run copper network wire in parallel with AC power runs
- Practice proper wire management (zip ties are not your friend)
- Clearly label any punch blocks and patch cables

Oh and, Wire Management Matters!





Learn More:

www.arecontvision.com

sales@arecontvision.com

+1.818.938.0700

Connect with us



[linkedin.com/company/](https://www.linkedin.com/company/arecont-vision)

[arecont-vision](https://www.linkedin.com/company/arecont-vision)



Like us on

[facebook.com/](https://www.facebook.com/arecontvision)
[arecontvision](https://www.facebook.com/arecontvision)



[youtube.com/user/ArecontVision](https://www.youtube.com/user/ArecontVision)



Follow us on

twitter.com/arecontvision
[@arecontvision](https://twitter.com/arecontvision)

Arecont Vision Corporate Blog

<http://blog.arecontvision.com>