

Arecont Vision Update

June Customer Update



Leading the Way in Megapixel Video

- Good finish to May 2017!
- New products are coming in June and July that were on display at ISC West in April!
- Continued Progress with VMS/NVR Partner sales opportunities. Our activity is much stronger and the opportunities are terrific!
- Project Registrations ranging 30-40% in additional discount! Best in Industry!
- Quality and Service continue strong improvement in RMA reductions and solid call rates. Averaging less than 2 voice messages per day!
- Customer Satisfaction continues to improve and highly rated! Exceptional results in June!
- Buy American Executive Order Program is in process!

MegaVertical Presentation: City Surveillance

Caution: File is 145MB 😊

- Megapixel camera technology enables city, county, state, and federal governments worldwide to deploy new, cost-effective applications for enhanced situational awareness and forensic viewing
- With security concerns on the rise, video surveillance is often the first and sometime the only witness to incidents and the actions that led to them
- Cities and municipal governments worldwide are leveraging Arecont Vision megapixel cameras to monitor a wide range of activities including...
 - Criminal behavior and vandalism
 - Law enforcement and first responders
 - Deterrence and documentation
 - Terrorist actions
 - Traffic monitoring
 - Parking
 - License plate recognition
 - Facial recognition
 - Crowd monitoring
 - Overall situational awareness

Representative End Users



City and Municipal Surveillance: North America



News
Video

Alburtis

Case
Study



News
Video

Big Four Bridge

News
Video

News
Video



News
Video



News
Article



Case
Study



Video
Case
Study

Leading the way...



News
Article



News
Article



Case
Study



News
Article



News
Article



The Seal of the City
of New York



City and Municipal Surveillance: International

Case Study



Case Study



News Article



Case Study



بلدية مدينة أبوظبي
ABU DHABI CITY MUNICIPALITY



United Arab Emirates
Ministry of Interior



Commune de
Roissy-en-France

ville de Cambrai



Fushan (福山区)

Humen
虎门镇

Suzhou
苏州市

Yangzhou
扬州市

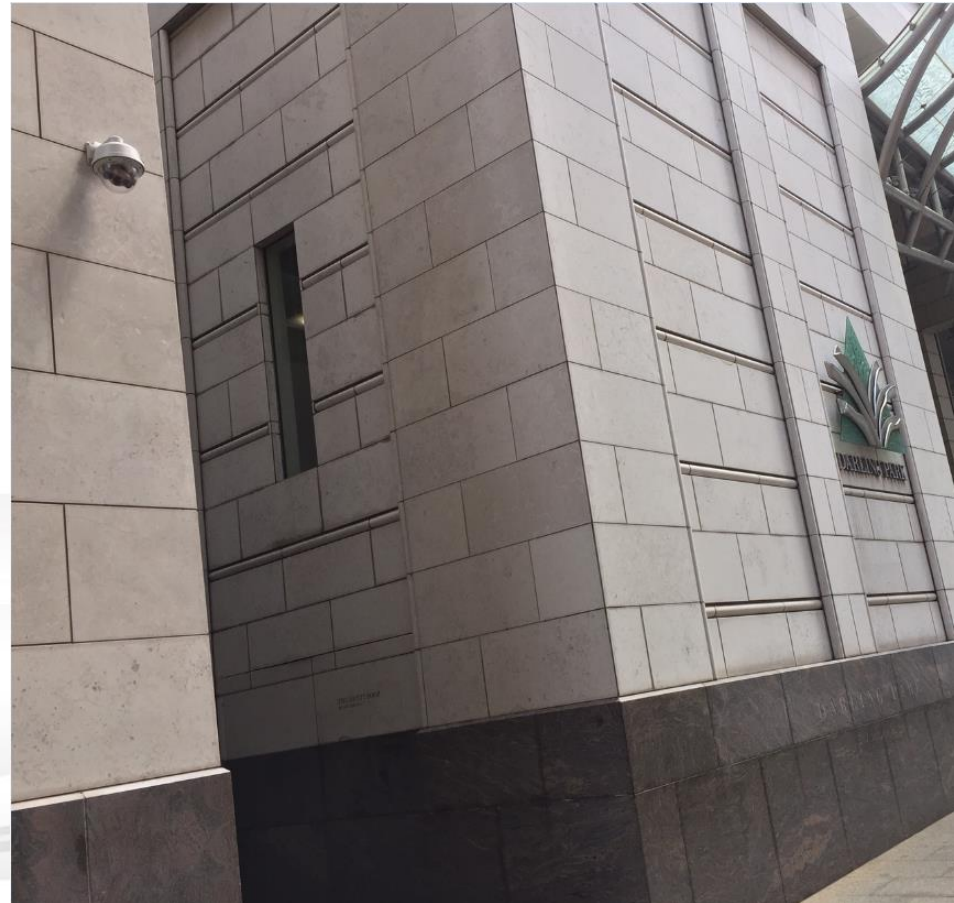


Ville de
Chantilly
Ville d'Art et d'Histoire



中國無錫
Wuxi China



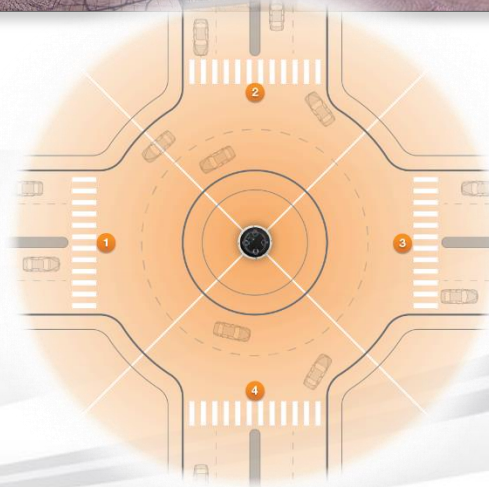








- **SurroundVideo®** Omni set up in the center of a traffic circle for a true 360 degree panoramic view

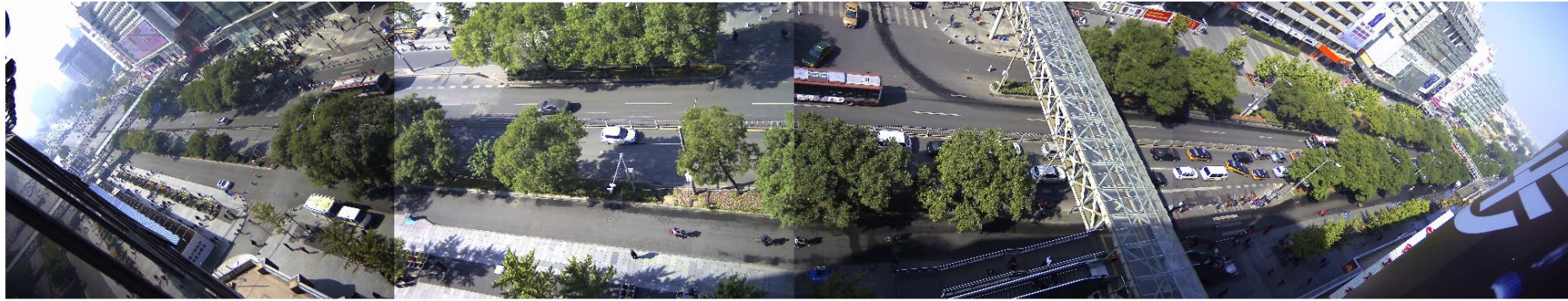


True 360° Traffic Circle
(Four 90° Lenses)

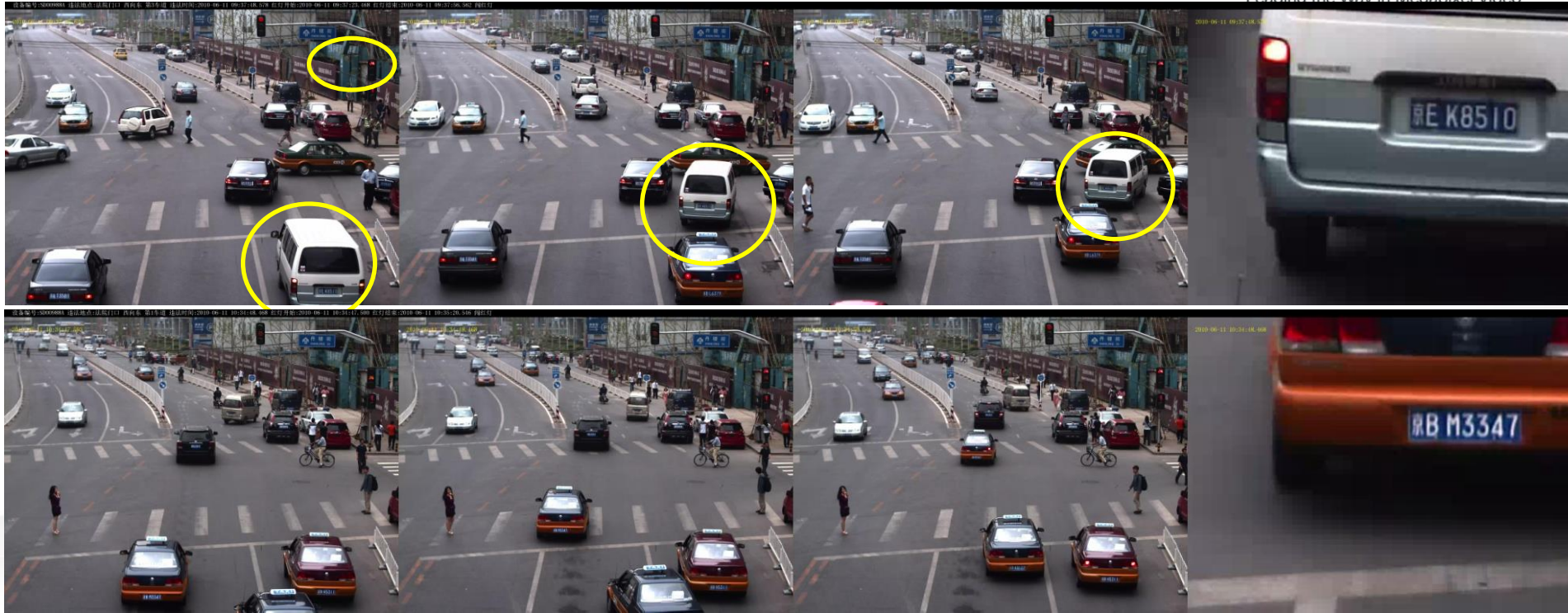
Roadway Situational Awareness



Leading the Way in Megapixel Video™



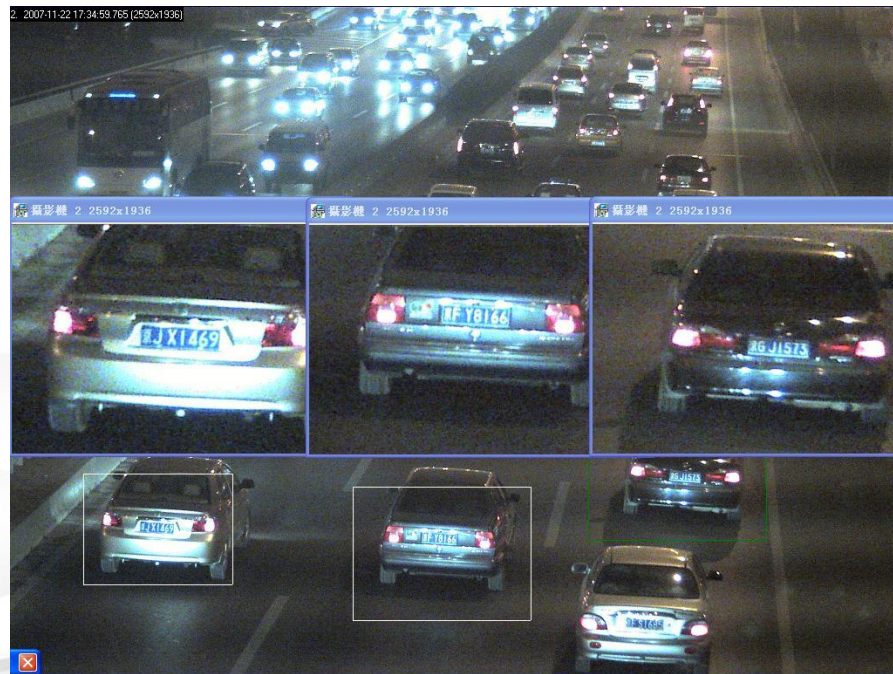
Traffic Violations - Red Light Enforcement



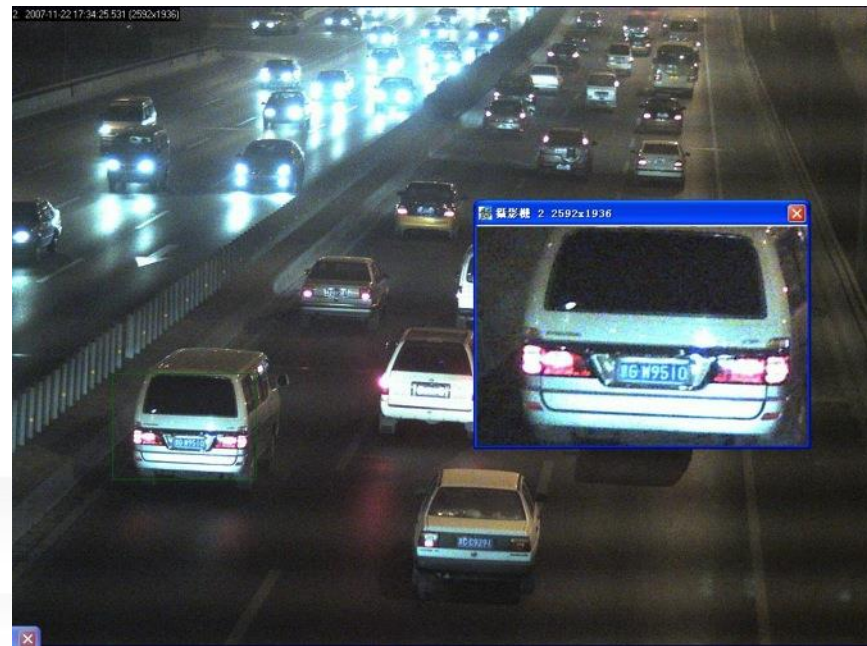
Capture LP for 3 lanes

- Use AV5115 5M to cover 3 lanes
- Single capture mode to snapshot images when violations happen
- LPR software
- External LED light

LPR Capture Using 3MP to Cover 3 to 4 Traffic Lanes



LPR Capture Using 5MP to Cover 5 Traffic Lanes



Solution:

- Use 5MegaPixel (AV5115DN) mounted on top of the cross bridge
- Covered up to 5 lanes on each side of the street



Challenge Addressed: Need to cover up to 5 lanes of high speed traffic

- Use 5M (AV5115) mount on top of overpass
- Covers up to 5 lanes on each side of the roadway

Street Parking Violation



**AVA PTZ
Housing**



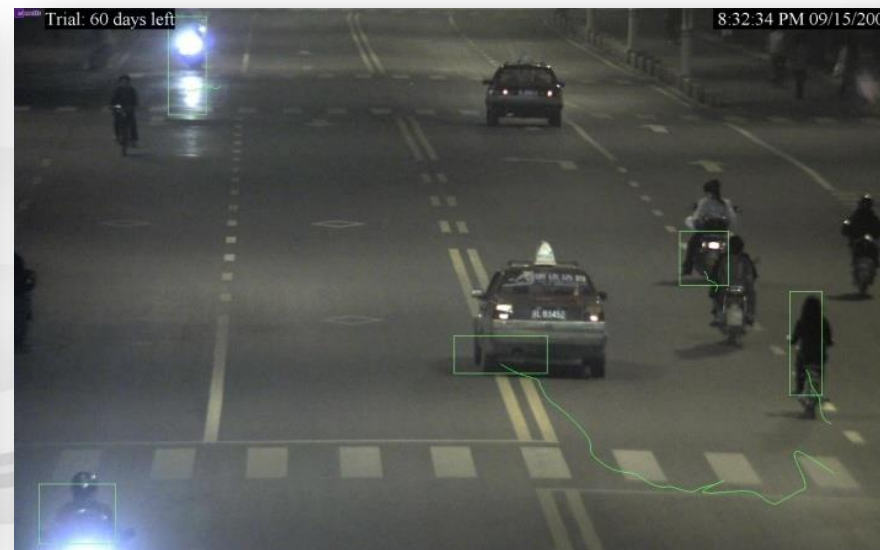
AV5115

Requirement:

Capture license plate of every vehicle entering and exiting the city

Solution:

- Uses AV2115 @ 30fps
- LPR software
- LED lighting if needed





SurrounVideo® WDR Installed at Kumbh Mela

- One of the largest congregations of people in the world at a single site – approximately 10 Million people at Kumbh Mela
- There are 125 Arecont Vision panoramic cameras installed at the site, watching this huge festival

City Surveillance



- Buenos Aires, Argentina
 - <http://goo.gl/6S0fTv>
- St. Andrew's Village, New Zealand
 - <http://goo.gl/RFeMxi>
- Alburty County, Pennsylvania
 - <http://goo.gl/lhaFRW>
- Seattle, WA
 - <http://goo.gl/r2tCky>
- Ulsan, South Korea
 - <http://goo.gl/PUIICP>
- Hollister, California (news story)
 - <http://goo.gl/1x9Wdx>
- Wisconsin State Fair, Milwaukee (news video)
 - <http://goo.gl/Hgwcl5>
- Horry County, Georgia (news video)
 - <http://goo.gl/8a4SJd>
- Sturgis, South Dakota (news story)
 - <http://goo.gl/Q5SoeC>
- Indianapolis, Indiana (news video)
 - <http://goo.gl/d3GxWD>
- Hollywood, Los Angeles, California (news video)
 - <http://goo.gl/8hjtCP>
- Brooklyn, New York
 - <http://goo.gl/xn9UGC> (news video)
- Bal Harbor, Florida (news video)
 - <http://goo.gl/fd7nme>
- Vail, Colorado
 - <http://goo.gl/7ejiAY>
- Manus, Connecticut (news story)
 - <http://goo.gl/BcLJCe>
- Miami, FL (news story)
 - <http://goo.gl/77ck4H>
- Big 4 Bridge, Indiana
 - <http://goo.gl/MS2TtD>

Customer Operations Roundtable May 2017

Pricing and Project Protection

- Arecont Vision protects systems integrators/distributors better than any other company.
- Project registrations discounts are ranging between 25-30% and lately have been over 40% using the products from the Spring Promotion
- Only one SI/dealer is registered for an end user project, except in rare cases. In those cases, the competing SI/dealers are both notified that project pricing has been provided to more than one reseller.
- Project registrations are turned around in less than 24 hours. Usually, in 2-4 hours.
- Registrations have no minimum, even one lens or camera mount can be registered, and conversely our sales team can work with the SI/dealer on large end user customers with multi-site locations globally to assure the SI/Dealer is price protected through the life of the project.
- We have a very easy to use online portal to register projects.

Support and RMA

- New on-line RMA process reduces time and improves accuracy.
- Arecont Vision usually handles RMA for defect with the SI/dealer directly. Distributor administrative people do not need to be involved.
- Arecont Vision wants to pre-approve the RMA by trying to troubleshoot the problem remotely or on-site before a RMA is approved. That way we make sure to only replace cameras that need to be replaced as opposed to just adjusting, changing settings, or firmware updating. This saves the SI/dealer time and gets the fix in place faster. It also reduces the chances of a misdiagnosed camera failure.
- Arecont Vision does advance RMA for all cameras in its warranty period. Three year is standard. Products may be upgraded for a fee to five year at the time of registration or original billing.
- Pricing grid for out-of-warranty repair prices so decisions can be made in advance of the RMA.

Technical Support Center (TAC)

- Based in USA at the Arecont Vision headquarters, adjacent to our engineering and quality departments.
- Investing significantly in new people, new tools, training, and new processes.
- 97% of calls are answered by live Technical Support Engineers
- Average less than 2 voice messages per day and those 2 calls are returned personally by the director of the TAC usually within 2 hours.
- Closed-loop support system improves customer service and reduces resolution time.
- With our MegaLab, we offer pre- and post-sales support with 3rd party VMSs and other technology partners.

Logistics

- Made in USA
- Easy order process
- 24 hour confirmation of order shipment date
- Immediate Project Registration discount is applied to the order.
- Products ship from Arecont Vision finished goods in our Glendale (Los Angeles) CA facility.
- If a large or small order comes in that requires products to ship that are not on the shelf, our operations people can schedule the product assembly. No need to wait for a shipment from Asia or other international facility. I think we are the only company that can do this in the USA.
- New on-line demonstration/evaluation unit process reduces time and improves accuracy.

Installation

- New remote setup configurations for a hands-free camera configuration experience.
 - Potentially removes extra costs of a lift or lift truck.
 - Provides greater safety for the installer, minimizing trips on a lift.
 - Product family currently includes: SurroundVideo Omni G3 and MegaDome G3
- Newly designed housings with easy installation for the installer, saving your installer time and ultimately costs.
 - Mounting plates with electrical box adapters built in and mapped on the plate so there's no guess work involved. Reduces installation time and improves efficiency.
 - Improved water tight integrity. Only one access port in our new designs with rugged grommets for full environmental protection.
 - Magnetic holding features for a single-handed installation. Providing safety, convenience, and time savings for the installer.
- Arecont Vision wall mounts now ship as a part of a complete unit with the junction box included at no extra cost.
- New mounting accessories designed for an easy installation experience with a standardized approach across most camera models making it easier for product selection and lowering the number of required SKUs.
- IP Utility Software Tool for small to large mass camera installations, camera settings and changes, and camera firmware updates that can be done in mass per each camera type.
- Improved Installation manuals and other collateral such as REVIT to assist and plan for camera installations
- QR codes right on the box for easy access to all installation manuals from any mobile device in the field.

Other points

- Arecont Vision conducts monthly satisfaction surveys of our customers. Over the last 5 years we have delivered tremendous improvement in logistics, presale support, quality, and post-sales support. Our customer satisfaction scores have improved significantly over the past 5 years while our customer shipments have more than doubled.
- Cybersecurity is important to Arecont Vision and we offer cyber protection others don't. We develop our own features and capabilities, instead of buying licensed code or chipsets from 3rd parties, for the best performance and cybersecurity protection. See our whitepaper on this topic. <https://www.arecontvision.com/whitepapers/>
- Arecont Vision FPGA (Field Programmable Gate Array) and 5th generation MPIP (Massively Parallel Image Processing) architecture allows for upgrades (color accuracy improvements, better processing, bandwidth advances, network security protocols, etc.) to currently installed cameras. This is unique to Arecont Vision.
- Designed and built in the USA.

Actions for you

- Please set up a Service/Parts agreement with Arecont Vision, if you don't already have one in place. It allows us to provide advance RMA units and demonstration/evaluation units without needing a special purchase order or credit card. Arecont Vision will set you up with a nominal credit line to accommodate your needs. As long as you return the defective camera (in the case of an RMA) or demonstration/evaluation unit on time, there is no charge.

Spring 2017 Promotion Program

Spring 2017 Promotion Program: Distributor/PR Pricing



Leading the Way in Megapixel Video™



Special Limited-Time Dealer and Systems Integrator Pricing on Select Cameras

Get the best pricing ever on popular Arecont Vision single- and multi-sensor megapixel cameras with project registration.

MicroDome®

(First Generation)



Model

1080p, 3MP, and 5MP
1080p WDR and 3MP WDR

MicroBullet®



Model

1080p and 3MP
1080p and 3MP WDR

MegaBall®

(First Generation)



Model

AV1145DN-3310-D-LG - 1.3MP
AV2145DN-3310-D-LG - 1080p
AV2145DN-3310-DA-LG - 1080p
AV2146DN-3310-D-LG - 1080p WDR
AV3145DN-3310-D-LG - 3MP
AV3146DN-3310-D-LG - 3MP WDR
AV3146DN-3310-DA-LG - 3MP WDR
AV5145DN-3310-D-LG - 5MP
AV5145DN-3310-DA-LG - 5MP

SurroundVideo®

(Second and Third Generation)



Model

8MP 180°
12MP 180° WDR
20MP 180°
40MP 180°

SurroundVideo® Omni

(First Generation)



Model

12MP, 20MP

MicroDome1 1-3MP: Change -10%

MicroDome1 5MP: Change -28%

MegaBall1: Change -12-37%

MicroBullet: Change -50%

SurroundVideo 2&3: Change -40%

OMNI 1: Change -33-40%

* Does not include shipping, duties, tariffs, taxes.

- Programs released:
 - Spring 2017 Promotion!
 - Trade UP Program
 - Try&Buy Program
 - Extended for Multi-Sensor Products, MicroDome Duo, 4K and Flex
 - Expanded for OMNI3, MegaDome3, 4K Box camera
- SI/dealers should sign up for service parts/demo agreements.
 - Immediate shipment without a credit card.
 - It is fast and simple to do.
- Our new products are shipping now and more to come next month!

Product Development Update

MicroBullet®

1080p or 3 Megapixel (MP) H.264 All-in-One 2.8–8mm Motorized Lens True Day/Night IR Indoor/Outdoor Bullet-Style IP Cameras with SNAPstream™ (Smart Noise Adaptation and Processing) and WDR (Wide Dynamic Range) Models

Highlighted Features Include:

- 1080p and 3MP Resolutions
- 2.8–8mm Motorized Lens for Remote Focus/Zoom
- Integrated IR LED Illuminator
- SNAPstream™ (Smart Noise Adaptation and Processing) for reduced bandwidth without impacting image quality
- Optional True Wide Dynamic Range up to 100dB at Full Resolution
- True Day/Night with Mechanical IR Cut Filter
- Indoor/Outdoor IP66 and IK-10 Protection Grade



Integrated Motorized Lens with Remote Focus and Zoom



True Day/Night with Mechanical IR Cut Filter



CorridorView™ with 90° Image Flip



Wide Dynamic Range Available on Select Models



SNAPstream™ Technology



Pixel Binning Mode on 3MP Models



IR LEDs



All-in-One Bullet-Style Solution



Casino Mode™ Maintains at Least 30fps on Select 1080p Models



Impact / Weather Resistant IK-10 and IP66 Rated

MicroBullet®

New Accessories



MCB-JBAS
adapts to AV-
JBA



MCB-JBA



12 or 20 Megapixel H.264 All-in-One 3rd Generation Omni-Directional Multi-Sensor Day/Night Indoor/Outdoor Dome IP Cameras with Remote Setup

Highlighted Features Include:

- Multi-Sensor, Multi-Megapixel (12 and 20 MP) Omni-Direction Low Profile Dome Camera with Advanced H.264 Compression, Optional WDR, Increased Frame Rates, and Remote Focus
- No-Touch **Remote Setup** for all 4 Individual Camera Gimbals for Setup or Field of View Changes
 - 180°, 270°, 360° view presets plus up to 2 custom user-defined presets
 - User-Specific View / Angles / Focus
 - Varifocal motorized lens
- True Day/Night and Wide Dynamic Range (WDR) Models
- SNAPstream™ Advanced Compression Algorithm Reduces Bandwidth Without Impacting Image Quality



Remote Setup



SNAPstream™
Technology



Omni-Directional Track
with 4 Customizable
Sensors



Presets
180°/270°/360°



Custom Presets



Motorized
Pan & Tilt Capable



Wide Dynamic Range
on Select 12MP Models



True Day/Night
with IR Cut Filter



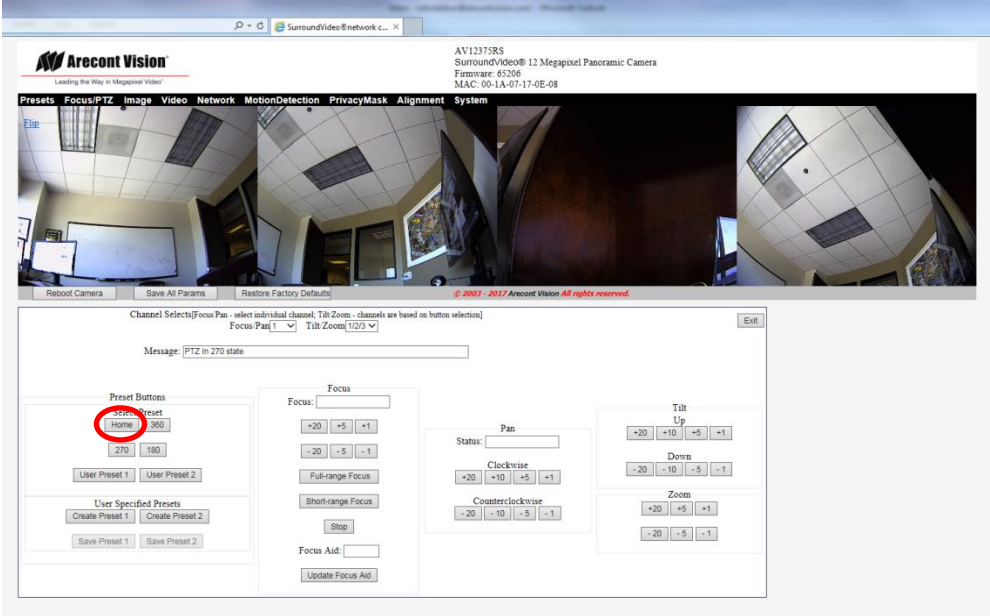
Pixel Binning
Mode



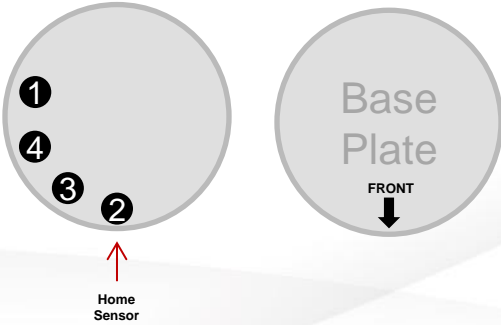
Impact / Weather
Resistant IK-10 and
IP66 Rated



Dual Encoder
H.264/MJPEG

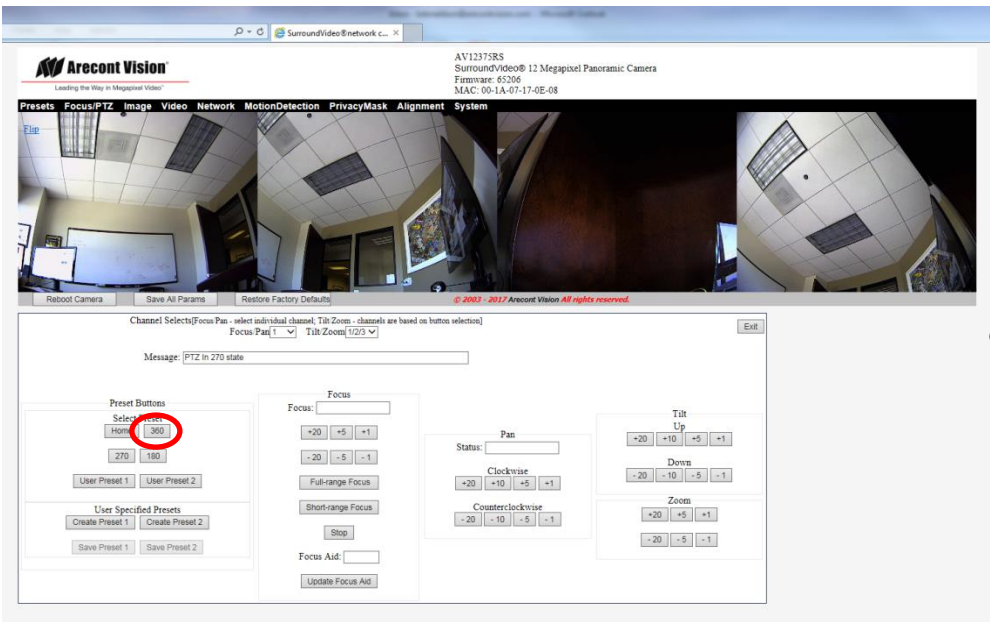


Home Preset



Video is disabled while moving to presets, not for manual movements

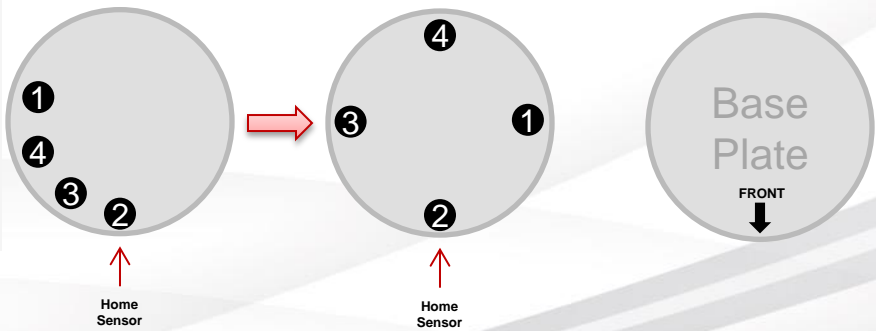
Message: Moving to Home Preset PTZ In process - live video is disabled

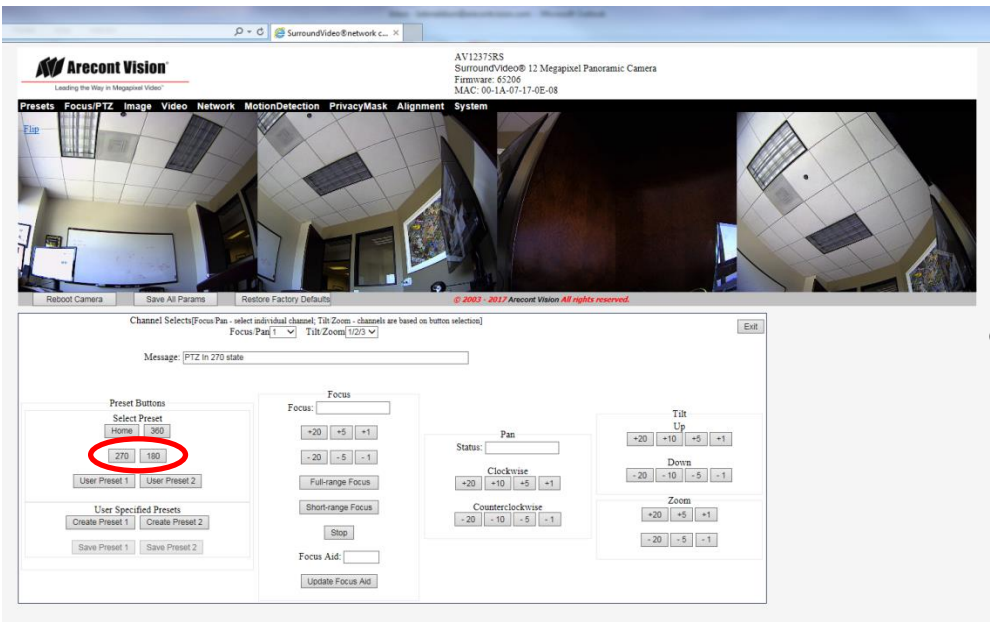


360 Preset Sequence

Goes to Home Position
First to Calibrate

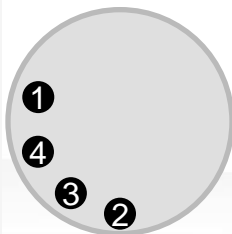
Then Goes to 360





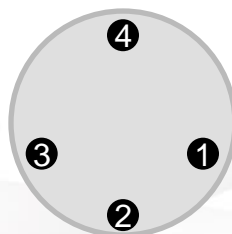
270 or 180 Preset Sequence

Goes to Home Position
First to Calibrate



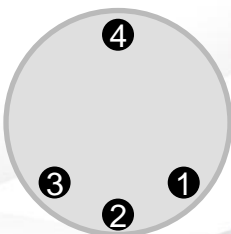
Home
Sensor

Then Goes to 270



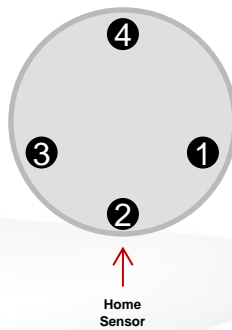
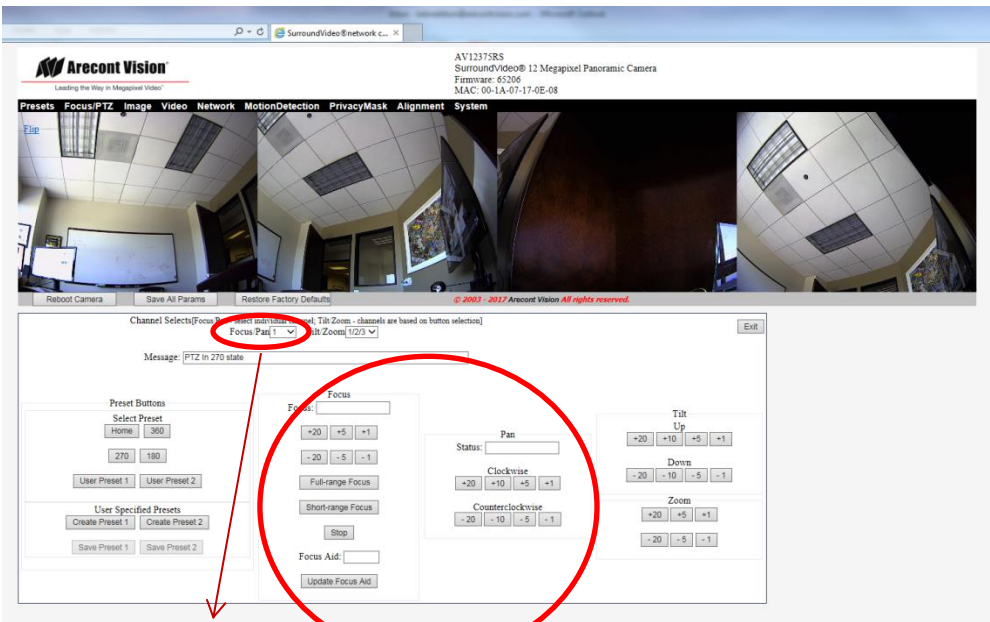
Home
Sensor

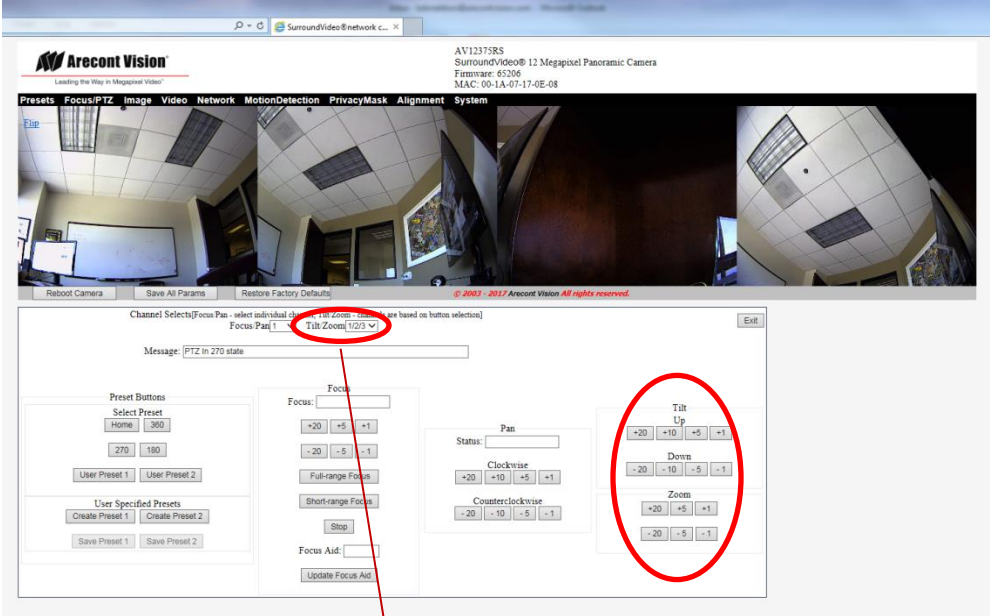
.....or 180



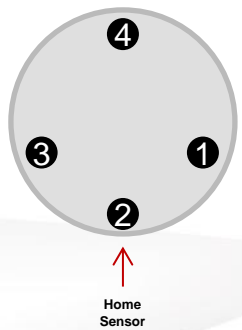
Home
Sensor

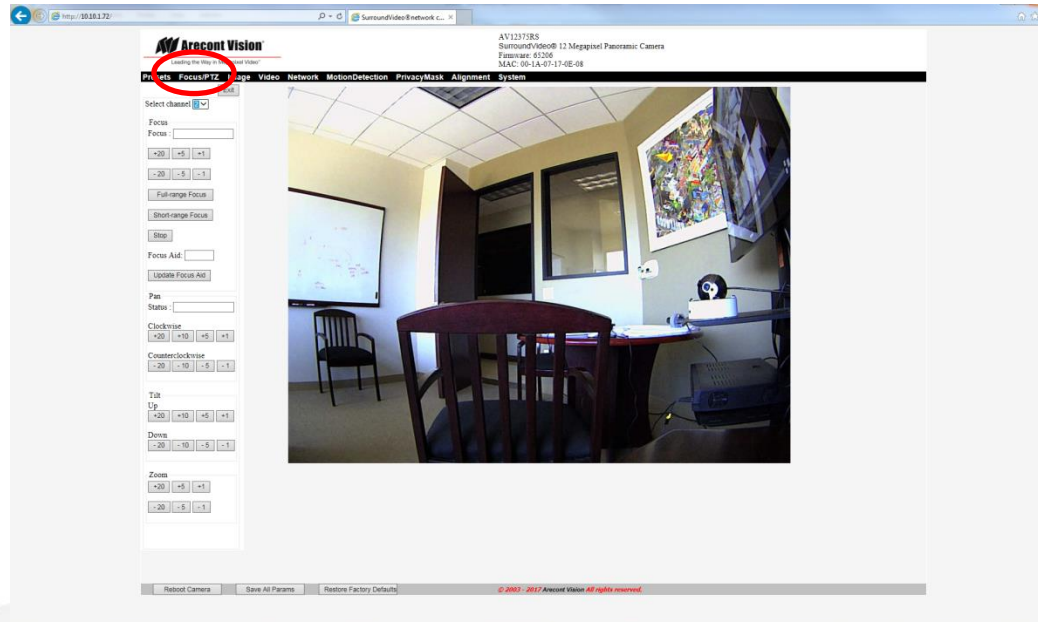
Leading the Way in Megapixel Video™





annel; Tilt/Zoom - channels a
Tilt/Zoom 1/2/3 ✓





Watch the video at:

<http://www.arecontvision.com/trainingvideo.php>

Protecting the City of Brooklyn

The Leiby Kletzky Security Initiative





- Cameras needed to be able to work on a Verizon 4G network and store video locally
- 150+ Arecont Vision multi-sensor cameras AV8185DN-HB
- The city needed total overall coverage of the streets with no miss in coverage using fewer cameras
- Ease of install, Less Licenses, and Higher resolution than a PTZ

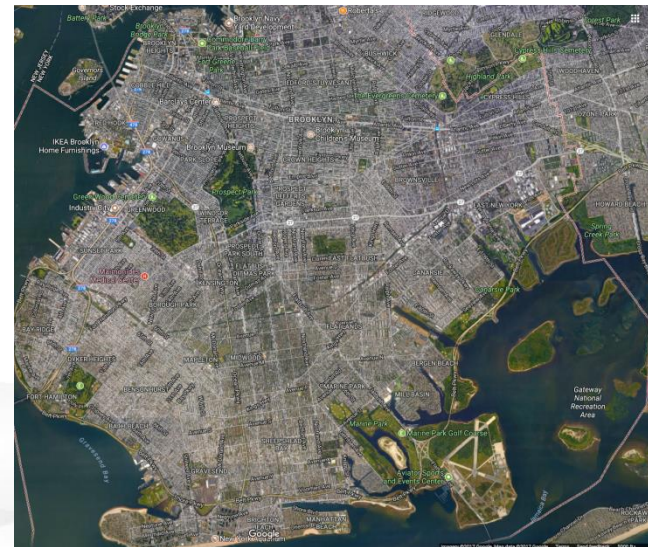
Protecting the City of Brooklyn



Leading the Way in Megapixel Video™



CORPORATE VIDEOS









Protecting the City of Brooklyn



2 Wire Runs
2 Times the Labor

2 Camera License
on NVR



5MP Day/Night	MSRP	QTY	Total
AV5155DN-1HK	\$1,500	2	\$3,000
MD-WMT2	\$150	2	\$300
			\$3,300



VS



How Cost Effective



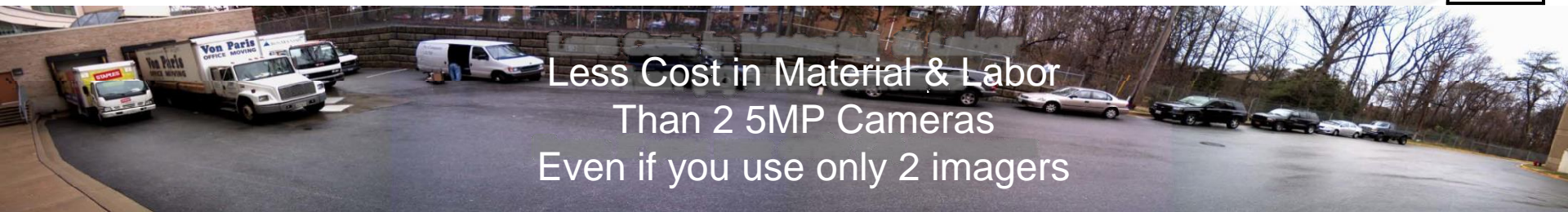
1 NVR License
Most NVRs



1 Camera

1 Wire Run

5MP Day/Night	MSRP	QTY	Total
AV5155DN-1HK	\$1,500	2	\$3,000
MD-WMT2	\$150	2	\$300
			\$3,300
20MP Day/Night	MSRP	QTY	Total
AV20185DN-HB	\$3,098	1	\$3,098
SV-WMT	\$160	1	\$160
			\$3,258



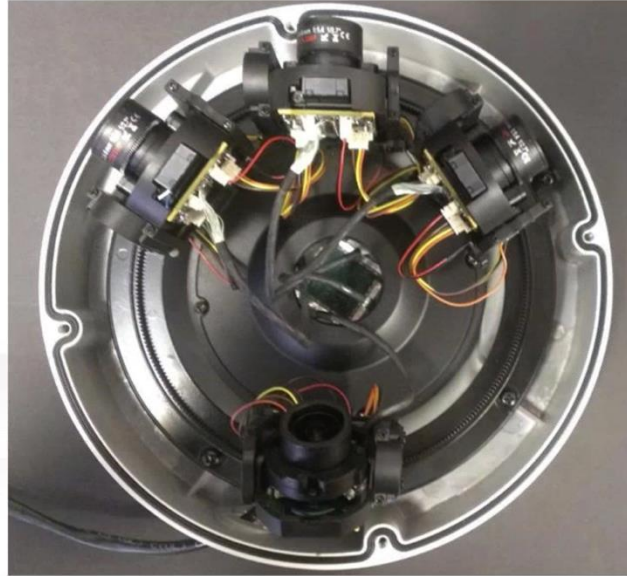
Less Cost in Material & Labor
Than 2 5MP Cameras
Even if you use only 2 imagers

1 Large Coverage Area

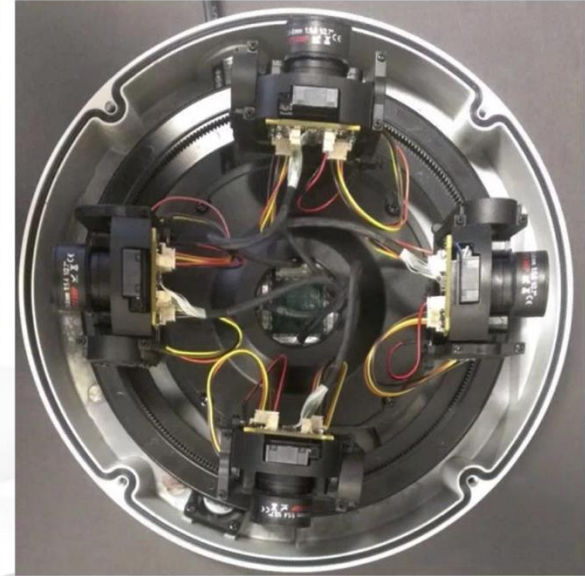
**1.3MP****HDTV****VGA****Arecont Vision
Panoramic**



180°



270°



360°

- Camera Reduction
 - Covering a wider FOV results in less lenses, housings, NVR license fees, cable runs, labor time.
 - Less cameras to monitor increases productivity
- Resolution Increase
 - Megapixel allows you to maximize scene resolution, and yield the best image quality possible producing live and archived video with forensic evidentiary value.

Tech Tips & Tricks: P-Iris Technology

- P-Iris stands for “Precision”
- It is an improved auto iris technology that seeks to optimize the depth of field in a given image
- Instead of a DC motor P-Iris uses a precise stepper motor to control the iris position

- P-Iris technology allows more precise control of the aperture allowing the lens to achieve best possible position for maximum image depth of field in any given lighting condition
- Instead of gain the technology works with the shutter speed on the camera to control the iris position (Auto Iris is driven by signal gain)

- The aperture (iris) affects both the light getting to the sensor and the image depth of field
- Traditional auto iris lenses have drawbacks for Megapixel imaging, and there are limits to how effective electronic exposure control can be in some environments

So what's an iris?

- An iris is an adjustable lens aperture used to control the amount of light coming through the camera lens
- As the iris is opened, the more light it lets in and the brighter the scene gets



- Outdoor scenes with changing light levels were difficult for CCD sensors to maintain good exposure
- This motivated invention and evolution of auto iris lenses to control the aperture (iris)



- As signal gain increases to brighten the image the lens iris opens to brighten the image
- Auto-iris can have problems finding the right position with frequently changing light source
- These lenses don't allow good depth of field because the aperture is not fixed like a manual lens



Shallow depth of field



Deep depth of field

- P-iris is ideal for Megapixel imaging eliminating drawbacks of AI, and working together with the Cameras electronic exposure control to achieve best possible image in a given scene

Product Series featuring P-Iris



Leading the Way in Megapixel Video™



MegaBall G2



MegaDome 2



MegaDome 4K



P-Iris Control for
Best Depth of Field and
Image Clarity (PM Models)



MegaVideo G5



MegaView 2



SurroundVideo G5

Applications:

- Anywhere indoors or out where lighting conditions change through out the day



Learn More:

www.arecontvision.com

sales@arecontvision.com

+1.818.938.0700

Connect with us



[linkedin.com/company/
arecont-vision](https://www.linkedin.com/company/arecont-vision)



[facebook.com/
arecontvision](https://www.facebook.com/arecontvision)



[youtube.com/user/ArecontVision](https://www.youtube.com/user/ArecontVision)



[twitter.com/arecontvision
@arecontvision](https://twitter.com/arecontvision)

Arecont Vision Corporate Blog

<http://blog.arecontvision.com>